



MICROWAVE COMPONENT REDUNDANT SWITCH 1:1 LNA/B, C/KU/KA/X SUBSYSTEM



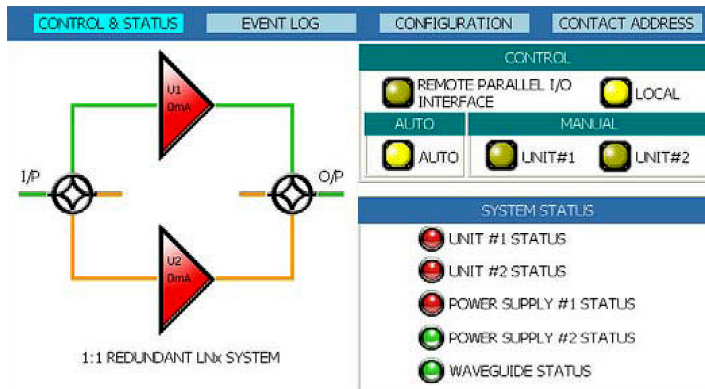
APPLICATIONS

RSW 1:1 LNx-RC is a fault tolerant subsystem which supports both C-band, Ku-Band, Ka-Band and X-Band LNA and LNB configurations. It is designed for 24x7 continuous operation as required in commercial grade telecom carrier applications. The LNx-RC indoor controller is equipped with dual redundant power supplies which are engineered to drive large C-Band (WR-229) Waveguide Switches even if one power supply is not operational. The RSW 1:1 LNx-RC uses a front panel LCD backlight time out, adjust brightness/contrast and alarm acknowledgment.

Once configured with correct IP addresses, you can access the unit thru a standard Microsoft IE web browser. The RSW 1:1 LNx-RC supports telnet and also has a standard serial RS-232 interface.

FEATURE HIGHLIGHTS

- Full M&C capability on the controller
- Built in embedded web server
- Large "easy to see" LED Mimic Display for intuitive and informative user interface
- Front panel LCD, keypad and discrete LED's for configuration purposes and real time status
- Dual redundant commercial grade power supplies
- Compact 19" rack size (2RU)
- Manual and Automatic Operation



TYPICAL SPECIFICATIONS

| | |
|---|---|
| Status LED Indicators | Remote / Local Auto / Manual Waveguide Power Waveguide Status Power Supply #1 LNA/B #1 Power Supply #2 LNA/B #1 |
| Status LED Dot Matrix Indicators | LNA 1, LNA 2 and Waveguide Switch |
| Controls | Keypad 2 Remote Connectors DB37 Serial RS232 (Optional) |
| Cable Length | 30 M (typical) |
| Features | Brightness / contrast adjustment Backlight timer Self test function Acknowledgement function External alarm on demand Serial control Lamp test function |
| General Characteristics | 0°C to +50°C 0-95% Humidity Non-Condensing Power Input 110 / 220 V.A.C. Mounting 2RU 19" Mini Buzzer |
| Controller Dimensions | 19" Width x 3.47" Height x 19.75" Depth |
| Controller Weight | 12.5 Kgs |

Online