

## C-Band 900 W Crossed-Field Amplifier

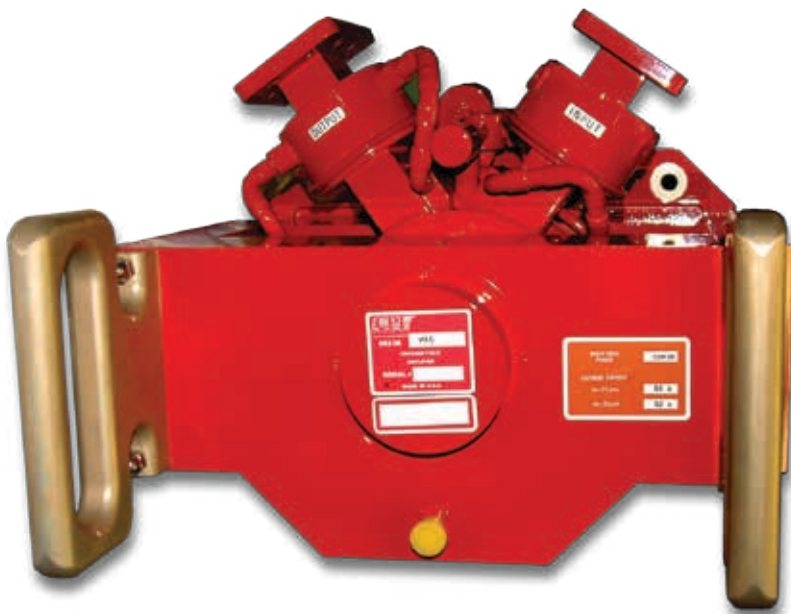
VXC1659

### Features:

- Frequency: 5.4 - 5.9 GHz
- Peak Power: 900 kW
- Duty Cycle: 0.005
- Pulsewidth: 50  $\mu$ Sec
- Anode voltage 30 kV
- Cold cathode
- Water cooled

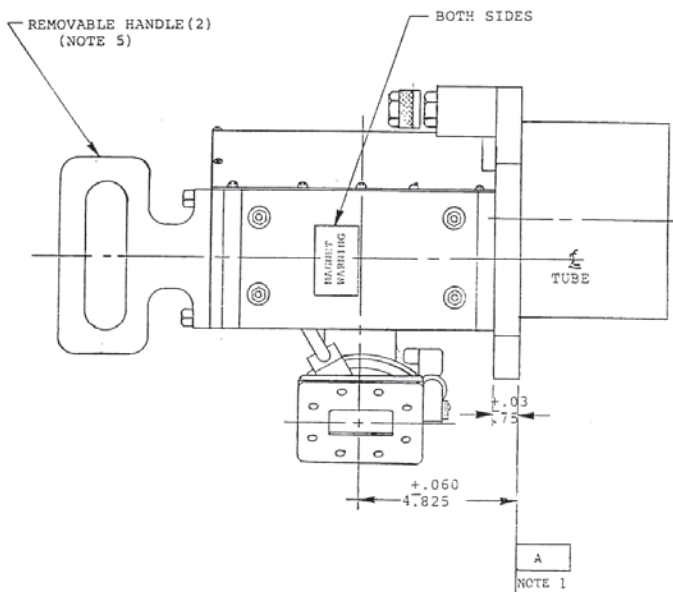
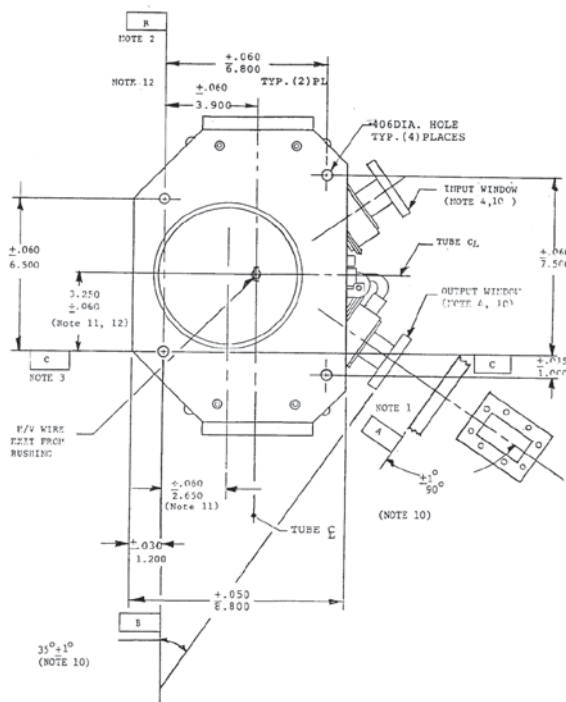
### Benefits:

- High peak power
- Wide bandwidth



### Applications:

- Ground based radar



The values listed above represent specified limits for the product and are subject to change. The data should be used for basic information only. Formal, controlled specifications may be obtained from CPI for use in equipment design.

For information on this and other CPI products visit our webpage at [www.cpii.com/bmd](http://www.cpii.com/bmd), or contact:  
CPI Beverly Microwave Division, +1 (978) 922-6000 • FAX: +1 (978) 922-8914 • [bmdmarketing@cpil.com](mailto:bmdmarketing@cpil.com)