

## X-Band 900 kW Crossed-Field Amplifier

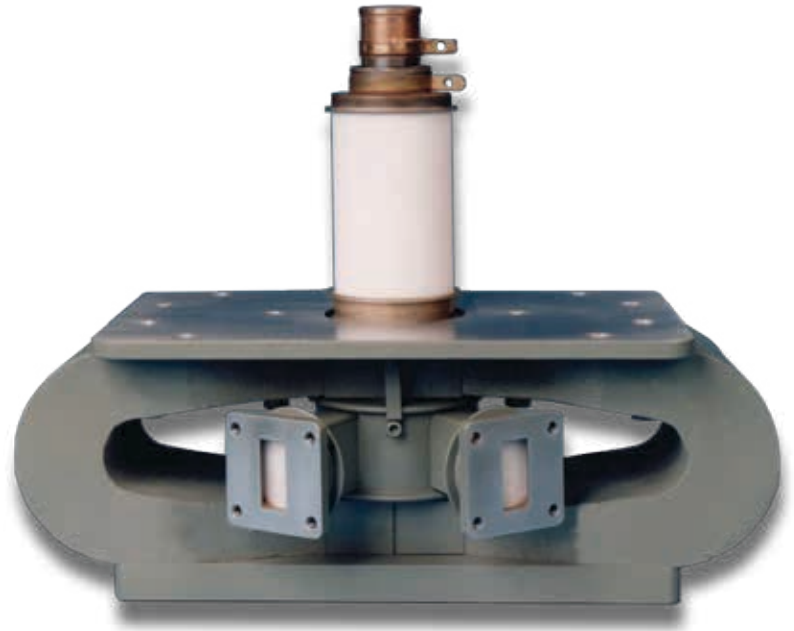
### SFD233G

#### Features:

- Frequency 8.9 – 9.5 GHz
- Peak Power Output 900 kW
- Duty Cycle .001
- Anode Voltage 38 kV
- Anode Current 60 amps
- Pulse width 0.83 microseconds
- Heater 10 volts @ 20 amps
- Liquid cooled anode

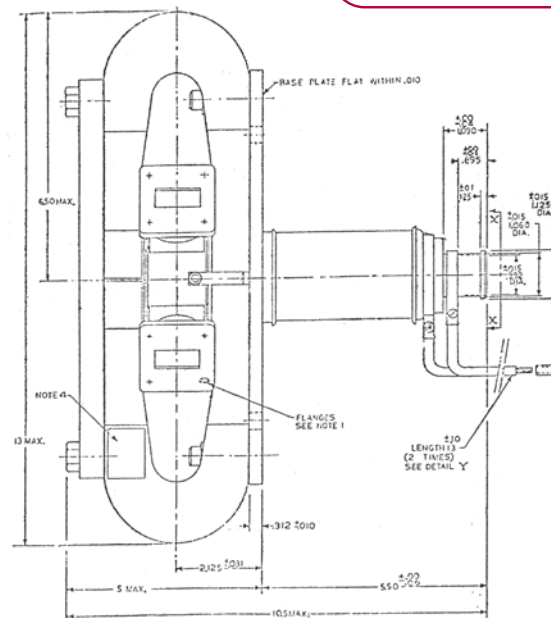
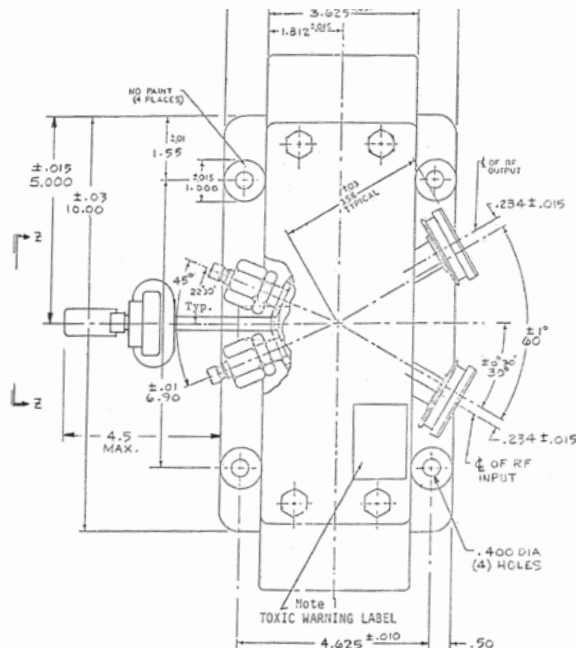
#### Benefits:

- High peak power
- Wide band width



#### Applications:

- Ground based radar



The values listed above represent specified limits for the product and are subject to change. The data should be used for basic information only. Formal, controlled specifications may be obtained from CPI for use in equipment design.

For information on this and other CPI products visit our webpage at [www.cpii.com/bmd](http://www.cpii.com/bmd), or contact:  
CPI Beverly Microwave Division, +1 (978) 922-6000 • FAX: +1 (978) 922-8914 • [bmdmarketing@cpil.com](mailto:bmdmarketing@cpil.com)