

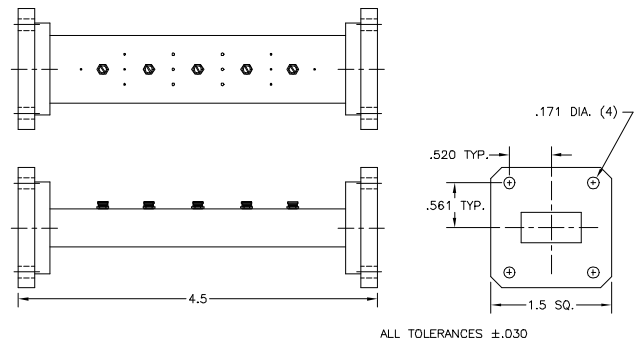
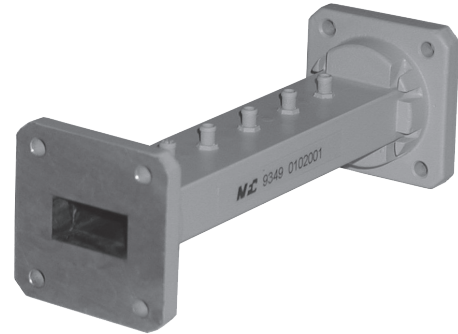
Ku-Band Multi-Purpose Receive Filter

Model 9349

This downlink filter not only provides isolation from the uplink band (14-14.5 GHz) but also suppresses potential interference from frequencies located below the receive band.

Specifications:

Passband:	11.7 - 12.2 GHz
Insertion Loss:	0.25 dB Typ
VSWR:	1.25:1 Max
Reject Bands:	14.0 - 14.5 GHz 10.55 - 10.68 GHz
Rejection:	55 dB Typ 14.0-14.5 GHz 60 dB Typ 10.55-10.68 GHz
Power:	1 Watt
Flanges:	WR75 Cover
Weight:	0.4 lbs (0.2 Kg)
Dimensions:	4.5" x 1.5" x 1.5" (114mm x 38mm x 38mm)
Finish:	Gray Lacquer



SatelliteDish.com
954-941-8883