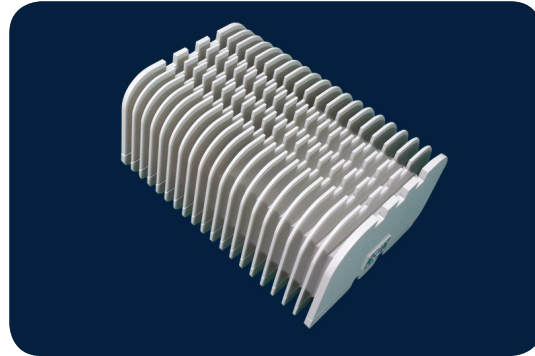




## BUC

### KA-BAND 10W

### 7010STC-O3B



#### TYPICAL SPECIFICATIONS

<b>Output frequency</b>	A: 27.652 - 28.388 GHz B: 28.172 - 29.071 GHz
<b>Input frequency</b>	A: 1052 - 1788 MHz B: 972 - 1871MHz
<b>LO frequency</b>	A: 26.60 GHz, B: 27.20 GHz
<b>Frequency conversion</b>	Double conversion
<b>Frequency sense</b>	No inversion
<b>Saturate output power</b>	40 dBm min. @ -40°C to 25°C 39 dBm min. @ up to 55°C
<b>Maximum linear output power</b>	38 dBm min.
<b>Input Return Loss</b>	10dB max.
<b>Output Return Loss</b>	10dB max.
<b>Phase noise (SSB)</b>	-73 dBc max. @ 1KHz -83 dBc max. @ 10KHz -93 dBc max. @ 100KHz
<b>External reference signal frequency</b>	10MHz
<b>External reference level</b>	-5 to +5 dBm
<b>External reference phase noise</b>	-145 dBc/Hz max. @1KHz
<b>Spectral regrowth</b>	25dBc max. @ 38dBm
<b>Group delay variation</b>	±5.0 nanoseconds over any 216MHz

#### SPURIOUS

<b>Signal related</b>	-60dBc max. @ 38dBm
Signal independent	-60dBm max.
2IF+LO	-60dBc max. @ 38dBm
LO leakage	-60dBm max.
<b>Gain control</b>	65 dB max (15dB, 1dB step)
<b>Gain stability over temp</b>	±2.5 dB at any const. frequency
<b>Gain flatness</b>	±1.5 dB in any 216MHz ±2.5 dB over full band
<b>Power requirement</b>	+36 to +72V supplied through MS connector
<b>Power consumption</b>	170W max.
<b>Input interface</b>	N-female
<b>Output interface</b>	WR-28
<b>Dimensions</b>	256 (L) x 180 (W) x 116 (H) mm
<b>Weight</b>	4.5 kg
<b>Operating temp.</b>	-40°C to 55°C
<b>Humidity</b>	0 – 95%
<b>M &amp; C Interface</b>	Ethernet or RS232 through MS3112e14-12P connector
	- Output power
	- Temperature
	- LO status
	- Output power mute
	- Gain control

#### HOW TO ORDER

## 7010STC-O3B-A

	<b>FREQUENCY</b> A: 27.652 – 28.388 GHz B: 28.172 – 29.071 GHz
	<b>Output power - 10W</b>
	<b>BUC SERIES #</b>



# KA-BAND 10W 7010STC-O3B

Connector	Parameter	Description
J1	IF Input Connector	N-Female, panel mounted
	Impedance	50 ohm
	10 MHz Reference input	
J2	RF output connector	WR28
J3	DC / M&C (Ethernet or RS232)	Panel-mount (MS3112e14-12P)
	J3-A	Ethernet Tx-
	J3-B	Ethernet Tx+
	J3-C	Ethernet Rx+
	J3-D	Ethernet Rx-
	J3-E	
	J3-F	RS-232 GND
	J3-G	RS-232 TxD
	J3-H	RS-232 RxD
	J3-J	DC Power (+36 to +72V)
	J3-K	DC Power return
	J3-L	Mute @ High
	J3-M	Mute return (=RS-232 GND)

## MECHANICAL DIAGRAM

