

# SPECIFICATIONS

**FREQUENCY BAND** : 7.25 - 7.75 GHz  
 : 7.90 - 8.40 GHz

**INSERTION LOSS** : 0.10 dB MAX

**VSWR** : 1.20:1 MAX

**ISOLATION** : 20 dB MIN

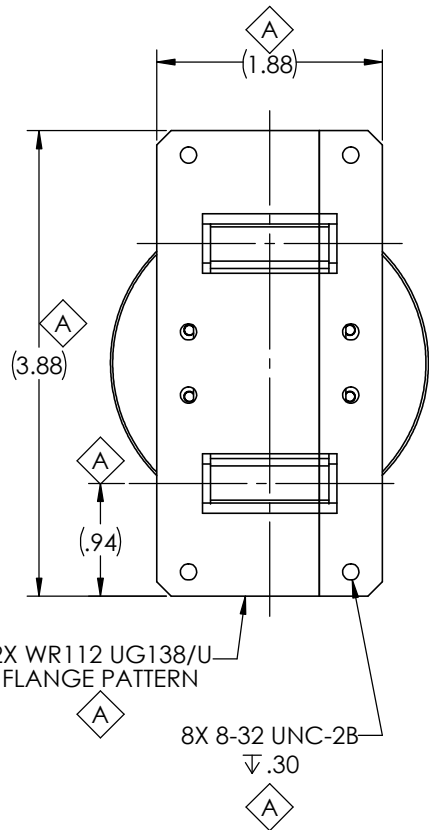
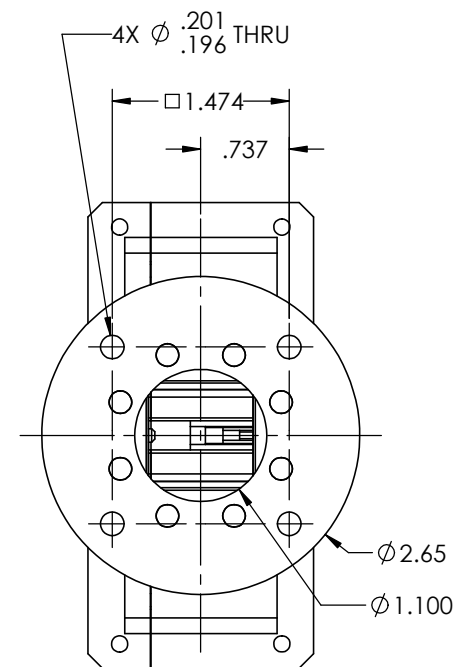
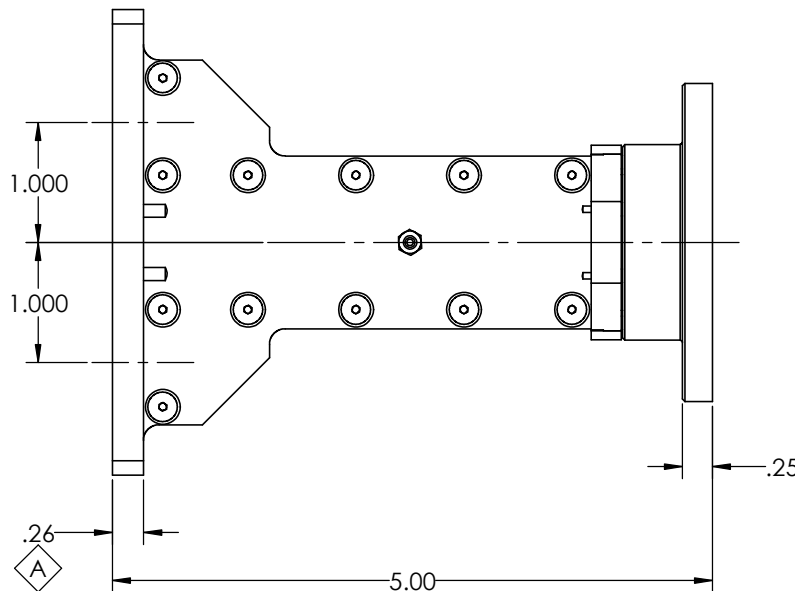
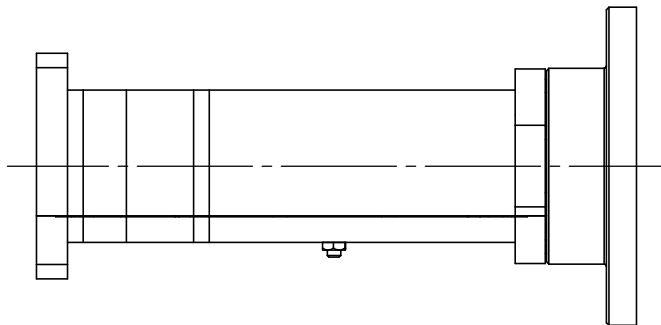
**AXIAL RATIO** : 0.50 dB MAX  
 (INTO MATCHED LOAD)

**POWER HANDLING** : 1.0 kW CW

**PRESSURIZATION** : SEALED TO 5.0 PSIG **A**

**FINISH**  
 FLANGE FACES : CHROMATE CONVERSION COATED **A**  
 (PER MIL-DTL-5541F, TYPE II, CLASS 1A)  
 EXTERIOR : NONE

REVISIONS				
ZONE	REV.	DESCRIPTION	DATE	APPROVED
	-	SEE DR № 10456	2011-06-18	J. Quicho
<b>A</b>	<b>A</b>	SEE CN № 13502	2015-11-02	J. Mitchell



2X WR112 UG138/U  
 FLANGE PATTERN

8X 8-32 UNC-2B

↓.30

DO NOT SCALE DRAWINGS		APPROVALS	DATE	GENERAL DYNAMICS PROPRIETARY	
UNLESS OTHERWISE SPECIFIED, INTERPRET DIMENSIONING & TOLERANCING PER ANSI/ASME Y14.5M-1992. DIMENSIONS ARE IN INCHES; DIMENSIONS SHOWN IN [ ] ARE FOR REFERENCE ONLY.		DRAWN: A. Mora	05-25-2011	<b>GENERAL DYNAMICS</b>	
TOLERANCES: TWO PLACE DECIMAL ±.01 THREE PLACE DECIMAL ±.004 FOUR PLACE DECIMAL ±.0005 ANGLES ± 0°30'		CHECKED: J. Quicho	06-18-2011	SATCOM Technologies	
SURFACE FINISH: <b>32</b> OR BETTER		RF DESIGN: J. Wrigley	10-29-2010	3111 Fujita Street, Torrance CA 90505, (310) 539-6704	
THIRD ANGLE PROJECTION		MFG: see CN	see CN	TITLE: <b>SEPTUM OMT, X-BAND WR112 UG138/U I/F</b>	
EAR CONTROLLED: Export or re-export subject to 15 CFR 700 - 799		QA: see CN	see CN	SIZE: <b>C</b>	CAGE CODE: <b>50478</b>
		ENG MGR: see CN	see CN	DWG №: <b>114509-4</b>	REV: <b>A</b>
		PROJECT:		SCALE: <b>5:4</b>	WEIGHT: 0.863 LB
				SHEET: 1	of 3

1. ALL EDGES AND CORNERS MUST REMAIN SHARP UNLESS OTHERWISE NOTED  
 NOTES: UNLESS OTHERWISE SPECIFIED.