

# SPECIFICATIONS

**FREQUENCY BAND** : 7.25 - 7.75 GHz  
 : 7.90 - 8.40 GHz

**INSERTION LOSS** : 0.10 dB MAX

**VSWR** : 1.20:1 MAX

**ISOLATION** : 20 dB MIN

**AXIAL RATIO** : 0.40 dB MAX (INTO MATCHED LOAD)

**PWR HANDLING** : 1.0 kW CW

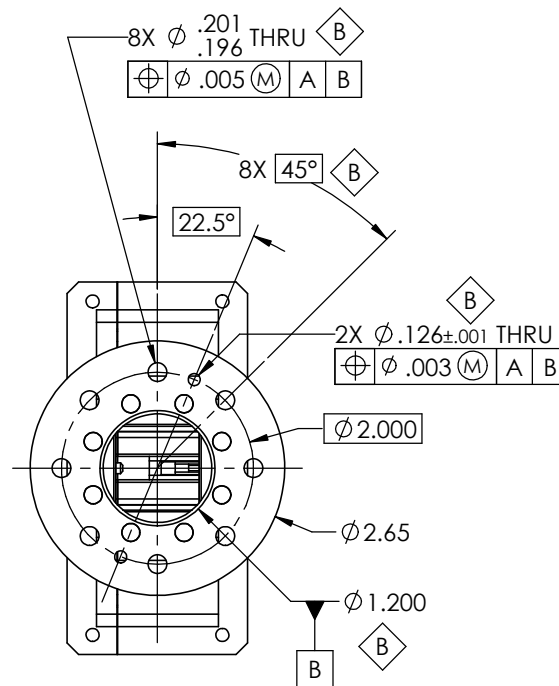
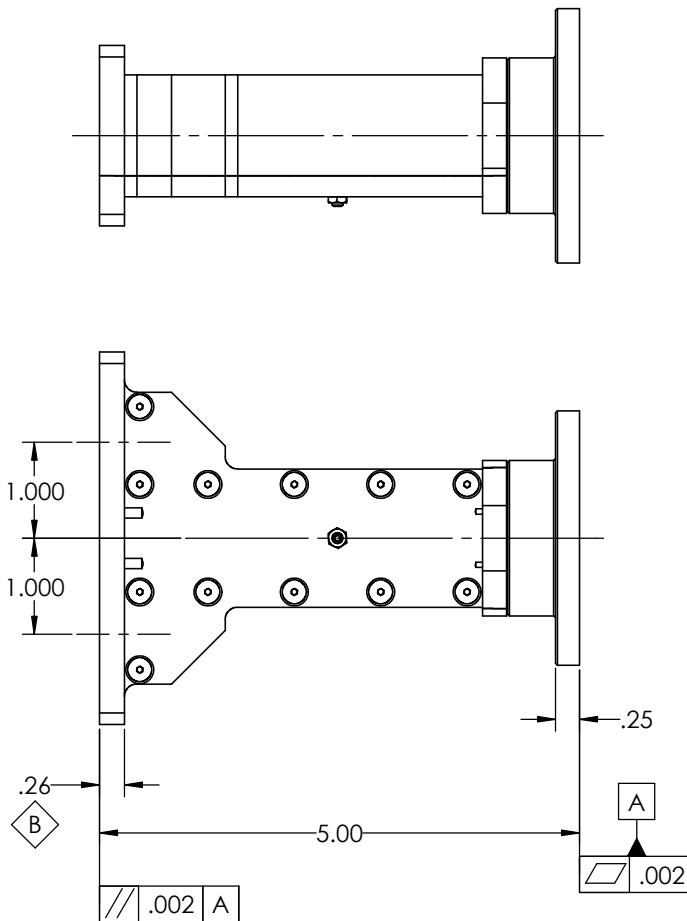
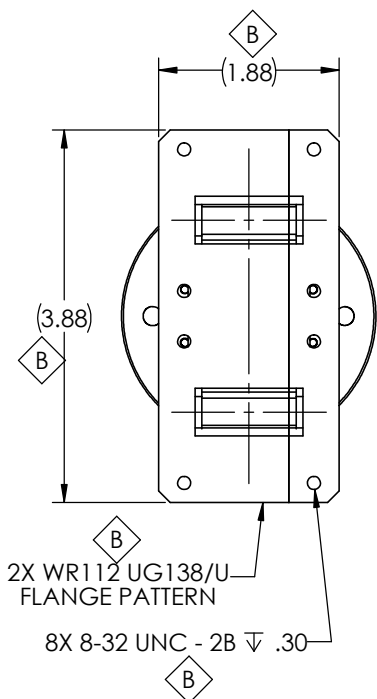
**PRESSURIZATION** : SEALED TO 5.0 PSIG

**FINISH**  
**FLANGE FACES** : CHROMATE CONVERSION COATED  
 PER MIL-DTL-5541F, TYPE II, CLASS 1A

**EXTERIOR** : NONE

# REVISIONS

ZONE	REV.	DESCRIPTION	DATE	APPROVED
	A	SEE DR № 11532	2012-04-05	J. Kerpan
B	B	SEE CN № 13500	2015-10-07	J. Mitchell



NOTES: UNLESS OTHERWISE SPECIFIED.

DO NOT SCALE DRAWINGS		APPROVALS	DATE	GENERAL DYNAMICS PROPRIETARY	
UNLESS OTHERWISE SPECIFIED, INTERPRET DIMENSIONING & TOLERANCING PER ANSI/ASME Y14.5M-1992. DIMENSIONS ARE IN INCHES. DIMENSIONS SHOWN IN [ ] ARE FOR REFERENCE ONLY.		DRAWN: H. Lim	10-22-2010	<b>GENERAL DYNAMICS</b>	
TOLERANCES: TWO PLACE DECIMAL ± .01 THREE PLACE DECIMAL ± .004 FOUR PLACE DECIMAL ± .0005 ANGLES ± 0°30'		CHECKED: C. Reitz	04-05-2012	SATCOM Technologies	
SURFACE FINISH: 32 OR BETTER		RF DESIGN: see CN	see CN	3111 Fujita Street, Torrance CA 90505, (310) 539-6704	
THIRD ANGLE PROJECTION		ENG MGR: see CN	see CN	TITLE: <b>SEPTUM OMT ASSEMBLY, WR112 UG138/U</b>	
EAR CONTROLLED: Export or re-export subject to 15 CFR 700 - 799		PROJECT:		SIZE: C	CAGE CODE: 50478
				DWG №: 114509-2	REV: B
				SCALE: 1:1	WEIGHT: 0.849 LB   SHEET 1 of 3