

SPECIFICATIONS

PASSBAND : 10.70 - 12.80 GHz
PASSBAND LOSS : 0.17 dB MAX FROM 10.70-12.75 GHz
 : 0.10 dB MAX FROM 10.95-11.70 GHz
 : 0.20 dB MAX AT 12.80 GHz

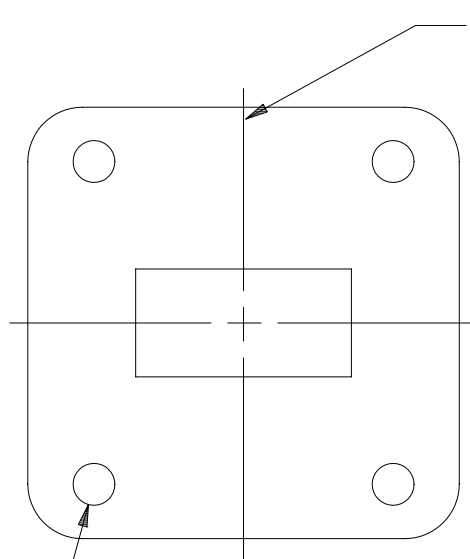
PASSBAND VSWR : 1.12:1 MAX
REJECTION : 60 dB MIN AT 13.75 TO 14 .0
 : 70 dB MIN AT 14.0 TO 14.5 GHz

PRESSUARIZATION : TESTED TO 5 PSIG
EST. WEIGHT : 0.44 Lbs (200 grams) ◇ B

FINISH
 FLANGE FACES: CAD PLATED PER QQ-P-416
 TYPE II, CLAS 2
 EXTERIOR: WHITE PAINT PER, COLOR
 No. 17875 PER FED-STD-595

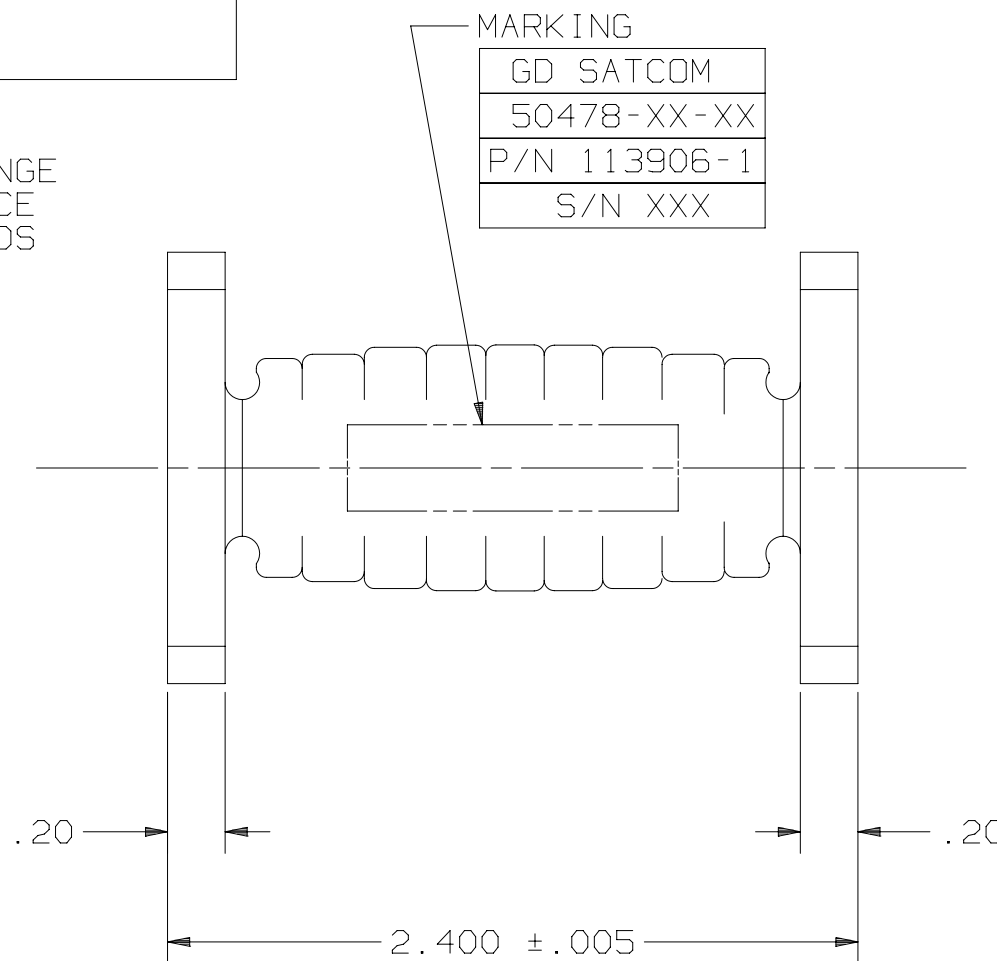
◇ B

REVISIONS			
REV	DESCRIPTION	DATE	APPROVED
B	SEE CN 13360	15-04-14	JMITCHELL



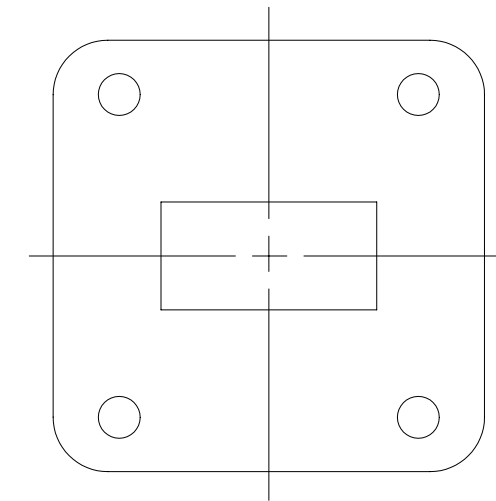
WR75 FLANGE
INTERFACE
BOTH ENDS

4x Ø .144
 .147 THRU
 BOTH ENDS



MARKING

GD SATCOM
50478-XX-XX
P/N 113906-1
S/N XXX



UNLESS OTHERWISE SPECIFIED	SIGNATURES	DATE	GENERAL DYNAMICS PROPRIETARY			
DIMENSIONS ARE IN INCHES	DRAWN: TOVALIN	10-04-06	GENERAL DYNAMICS SATCOM Technologies 3111 Fujita St., Torrance, CA 90505, (310) 539-6704			
TOLERANCES-	CHECKED: H. Spieleder	10-04-06				
SURFACE .XX ±.01	ENGRG:					
.XXX ±.002	ENGRG:					
.32 ✓ .XXXX ±.0010	ENGRG:		Ku-BAND FILTER 10.75 - 12.75 GHz			
ANGLES±	MFG:					
MATERIAL	EAR CONTROLLED:		SIZE	FSCM NO.	DWG No.	REV
COPPER ALLOY	Export or re-export subject to 15 CFR 700-799.		C	50478	113906-1	B
FINISH			SCALE: 2:1	SHEET 1		

NOTES: UNLESS OTHERWISE SPECIFIED.