

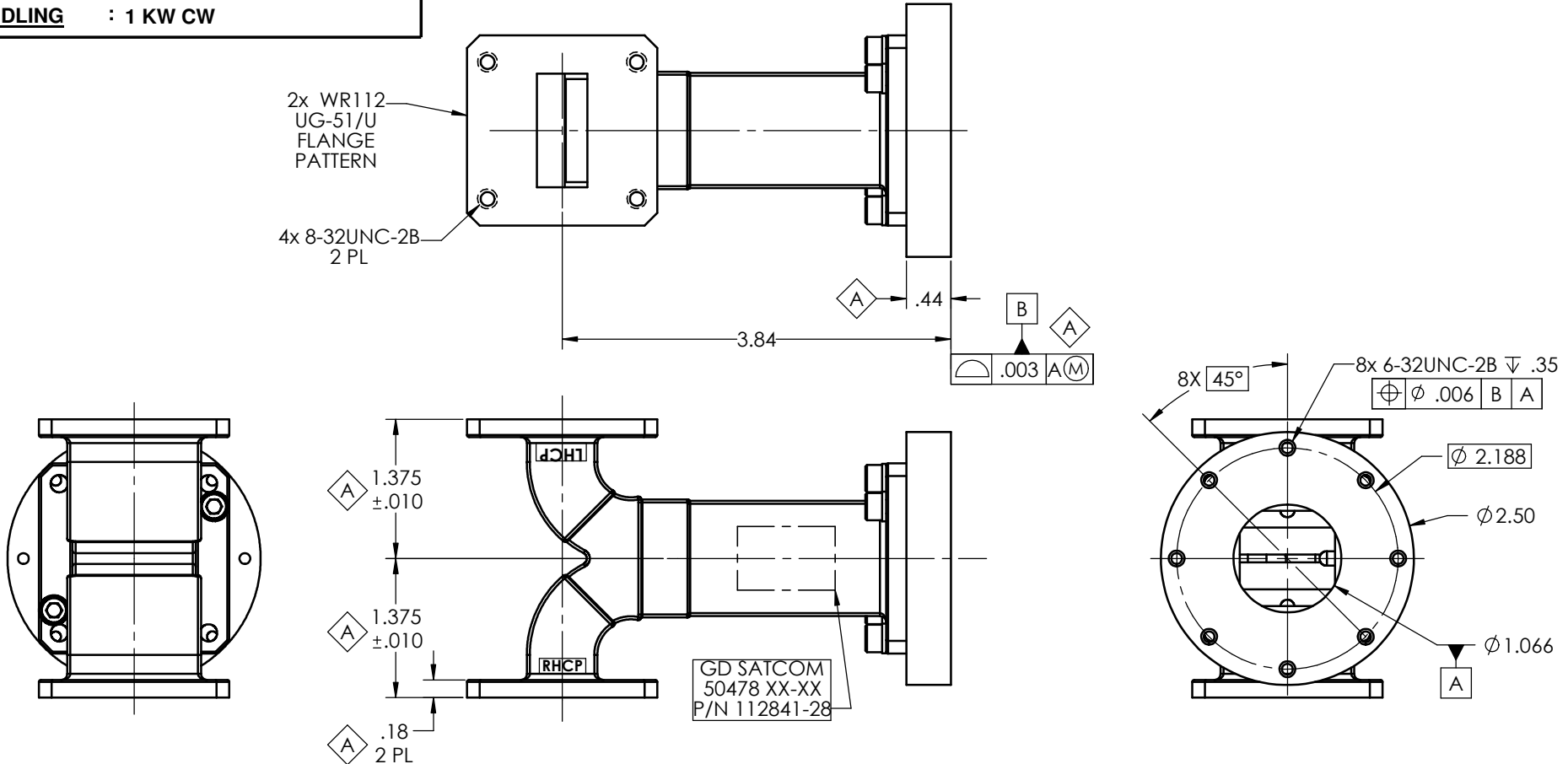
SPECIFICATIONS

| | | |
|-----------------------|--|--------------|
| FREQUENCY BAND | Rx: 7.25 - 7.75 GHz Tx: 7.90 - 8.40 GHz | } BOTH PORTS |
| INSERTION LOSS | : 0.10 dB MAX | |
| VSWR | : 1.2:1 MAX | |
| AXIAL RATIO | : 0.50 dB MAX (INTO MATCHED LOAD) | |
| POWER HANDLING | : 1 KW CW | |

PRESSURIZATION: SEALED TO 5.0 PSI

FINISH
FLANGE FACES : CHEM FILMED PER MIL-DTL-5541F, CLASS 1A
EXTERIOR : SEE NOTE 1

| REVISIONS | | | | |
|-----------|------|----------------|-----------|----------|
| ZONE | REV. | DESCRIPTION | DATE | APPROVED |
| A | A | SEE EC № 11473 | 7/23/2014 | |



1 NOMENCLATURE FOR EXTERIOR FINISH OPTIONS:

| | |
|-----------------------|---------------------------------|
| 112841-28B BLACK | COLOR No. 37038 PER FED-STD-595 |
| 112841-28W WHITE | COLOR No. 17875 PER FED-STD-595 |
| 112841-28G GREEN | COLOR No. 34096 PER FED-STD-595 |
| 112841-28-S SANDSTONE | COLOR No. 33510 PER FED-STD-595 |

NOTES: UNLESS OTHERWISE SPECIFIED.

| | | | | | | |
|---|---|----------|---|--------------|-----------------|---------|
| UNLESS OTHERWISE SPECIFIED INTERPRET DIMENSIONING & TOLERANCING PER ANSI Y14.5M-1992. DIMENSIONS ARE IN INCHES. DIMENSIONS SHOWN IN () ARE FOR REFERENCE ONLY. TOLERANCES ARE: SURFACE- TOLERANCES- .XX ±.01 .XXX ±.002 .XXXX ±.0010 ANGLES ±0°30' ✓ MATERIAL: CAST ALUMINUM | APPROVALS | DATE | GENERAL DYNAMICS PROPRIETARY GENERAL DYNAMICS SATCOM Technologies 3111 Fujita Street, Torrance CA 90505, (310) 539-6704 OMT-POLARIZER, X-BAND | | | |
| | DRAWN: TOVALIN | 11-29-10 | | | | |
| | CHECKED: | | | | | |
| | ENGR: | | | | | |
| | EAAR CONTROLLED: | | SIZE C | FSCM № 50478 | DWG № 112841-28 | REV A |
| | Export or re-export subject to 15 CFR 700 - 799 | | SCALE: 5:4 | | | SHEET 1 |