

SPECIFICATIONS

FREQUENCY BAND Rx: 7.25 - 7.75 GHz } BOTH
 Tx: 7.90 - 8.40 GHz } PORTS

INSERTION LOSS : 0.10 dB MAX

VSWR : 1.2:1 MAX

ISOLATION : 20 dB MIN


AXIAL RATIO : 0.50 dB MAX (INTO
 MATCHED LOAD)

POWER HANDLING : 1 KW CW

PRESSURIZATION: SEALED TO 5 PSIG

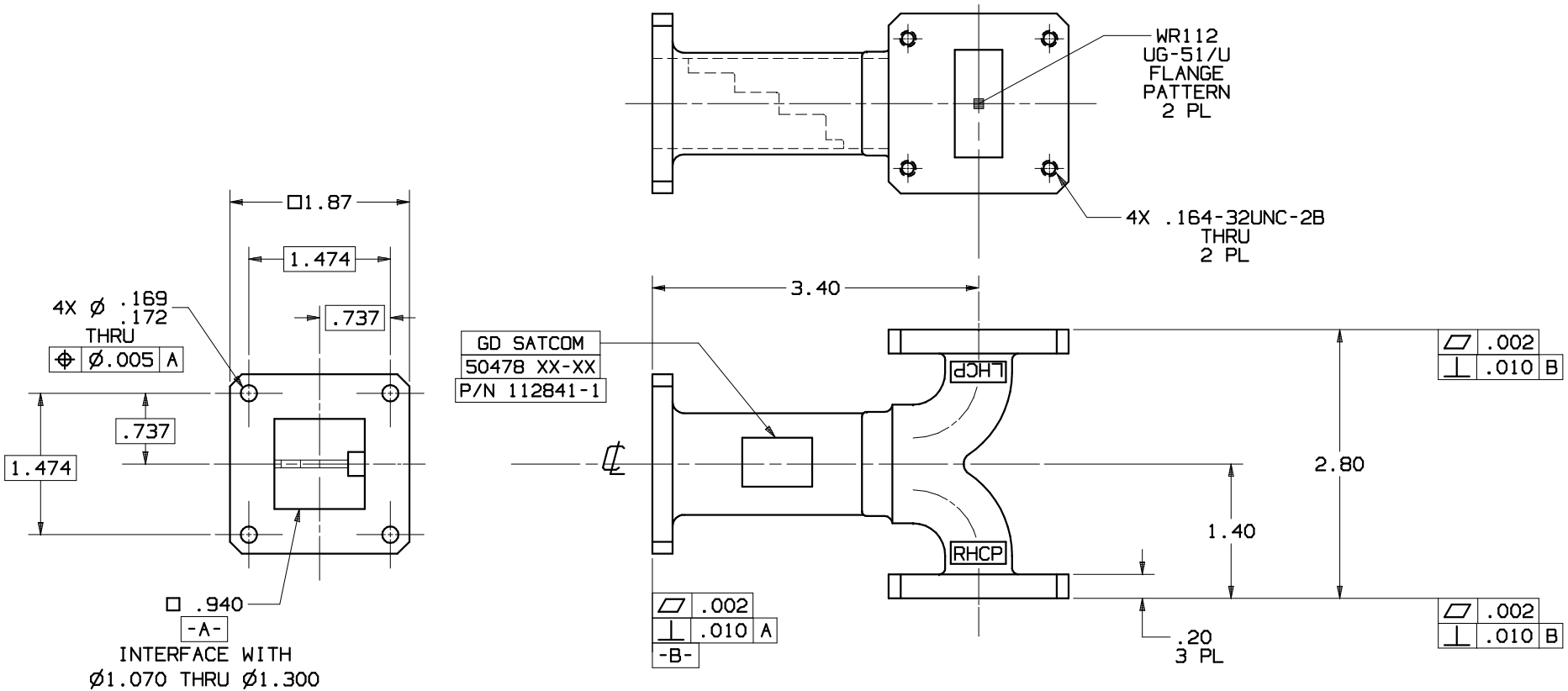
FINISH

FLANGE FACES: CHROMATE CONVERSION COATED
 PER MIL-DTL-5541, TYPE II,
 CLASS 1A

EXTERIOR: SEE NOTE 

REVISIONS

REV	DESCRIPTION	DATE	APPROVED
H	SEE ECN No 2673	3-3-2010	H.Spieleder
J	REVISED PER EC No 12791	9-27-2013	A.Jafar i
K	SEE CN No 13396	2015-04-30	J.Mitchel l



NOMENCLATURE FOR EXTERIOR FINISH OPTIONS:

- * 112841-1P UN-PAINTED PRIMER, LT GREY POLYURETHANE
- * 112841-1B BLACK PAINT, COLOR No 37038 PER FED-STD-595
- * 112841-1W WHITE PAINT, COLOR No 17875 PER FED-STD-595
- * 112841-1G GREEN PAINT, COLOR No 34096 PER FED-STD-595
- * 112841-1S SANDSTONE PAINT, COLOR No 33510 PER FED-STD-595
- * 112841-1D DESERT-TAN PAINT, COLOR No 33446 PER FED-STD-595

NOTES: UNLESS OTHERWISE SPECIFIED.

UNLESS OTHERWISE SPECIFIED		SIGNATURES	DATE	GENERAL DYNAMICS PROPRIETARY	
DIMENSIONS ARE IN INCHES		DRAWN: TOVALIN, L	06-02-04	GENERAL DYNAMICS SATCOM Technologies 3111 Fujita St., Torrance, CA 90505, (310) 539-6704	
TOLERANCES-		CHECKED: H.Spieleder	06-02-04		
SURFACE .XX ±.03		ENGRG:			
.XXX ±.004		MFG:			
32 ✓ ANGLES ±0°30'				OMT-POLARIZER, X-BAND	
MATERIAL CAST ALUMINUM		EAR CONTROLLED: Export or re-export subject to 15 CFR 700-799.			
FINISH				SIZE C 50478	FSCM No 112841-1
				DWG No 112841-1	REV K
				SCALE:	SHEET 1