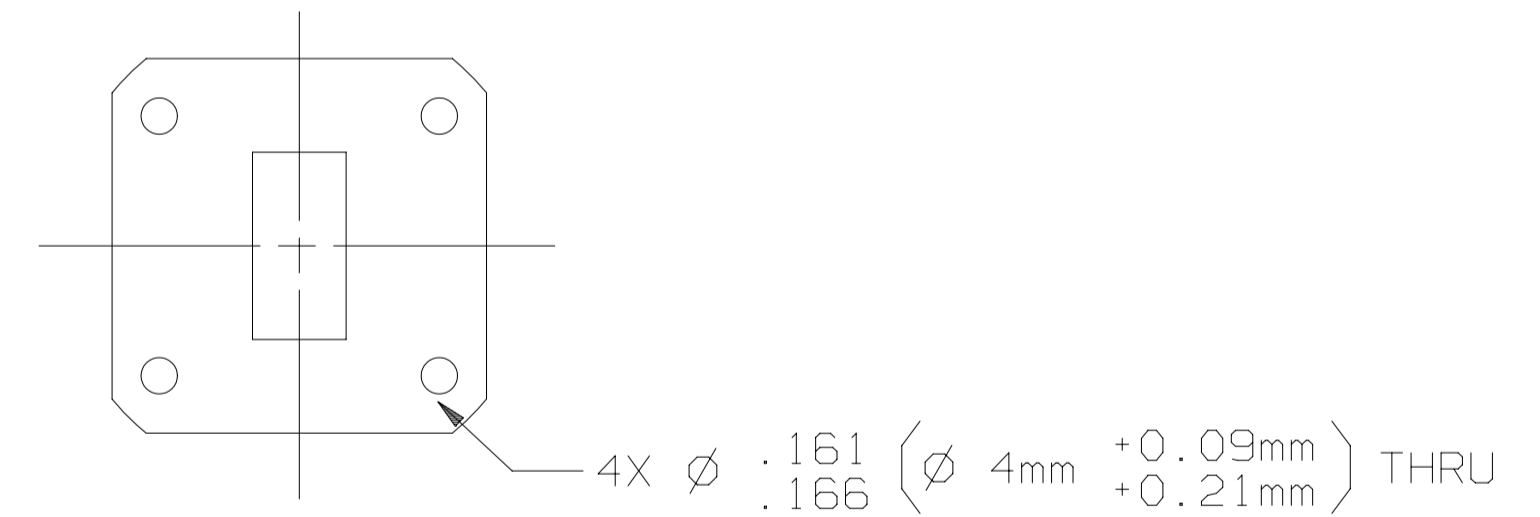
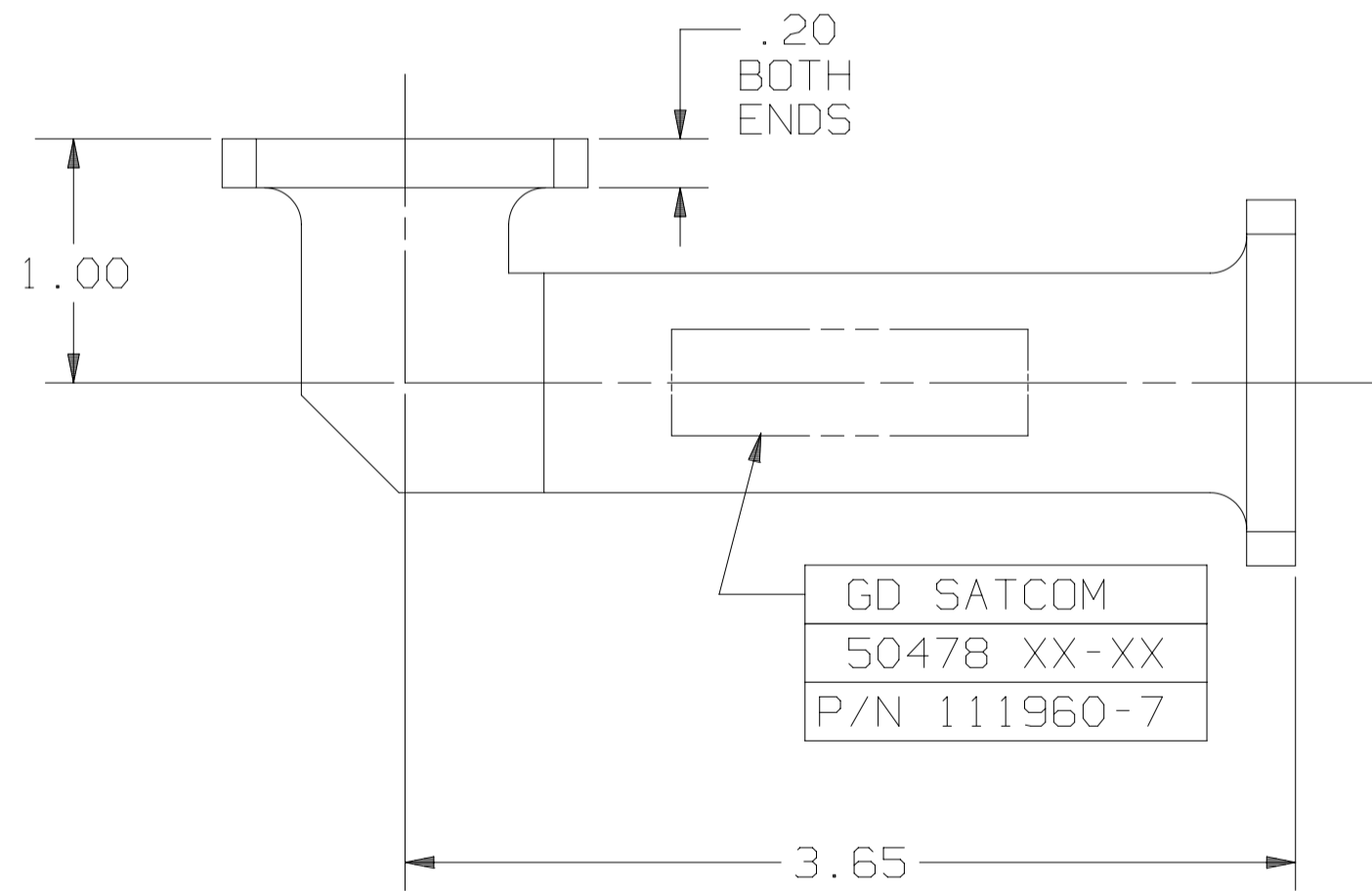
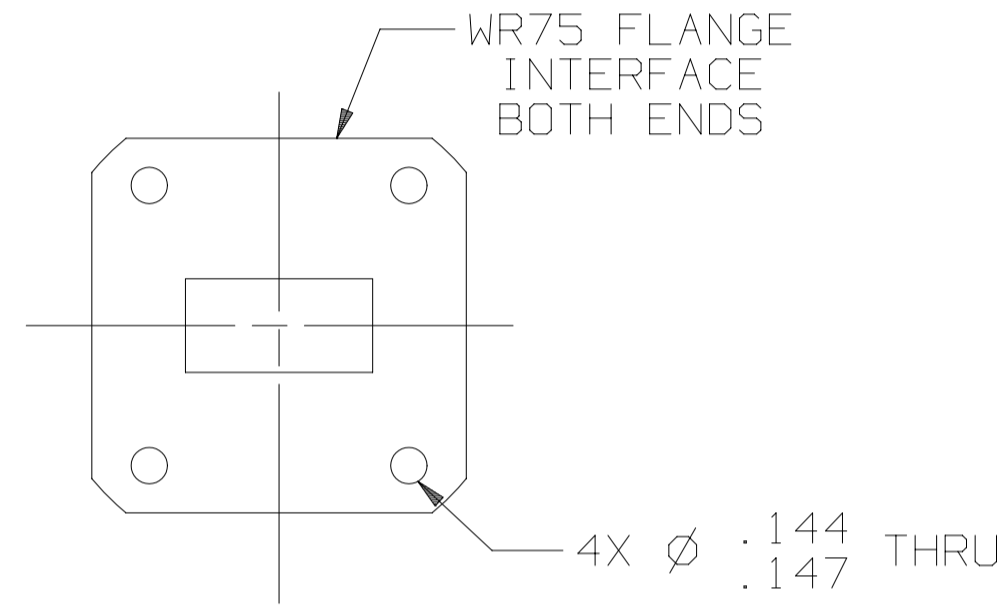


SPECIFICATIONS

PASSBAND : 10.70 - 12.75 GHz
 PASSBAND LOSS : 0.25 dB MAX
 PASSBAND VSWR : 1.20:1 MAX
 REJECTION : 55 dB MIN AT 13.75-14.50 GHZ
 PRESSUARIZATION: SEALED TO 5 PSIG
 FINISH : CHROMATE CONVERSION COATED PER MIL-DTL-5541F, TYPE 2 CLASS 1A

REVISIONS

REV	DESCRIPTION	EFFECTIVE DATE	APPROVED BY
B	DR# 10105	4-13-11	M. Lanes



NOTES: UNLESS OTHERWISE SPECIFIED.

UNLESS OTHERWISE SPECIFIED		APPROVALS	DATE	GENERAL DYNAMICS PROPRIETARY			
INTERPRET DIMENSIONING & TOLERANCING PER ANSI Y14.5M-1982. DIMENSIONS ARE IN INCHES. DIMENSIONS SHOWN IN () ARE FOR REFERENCE ONLY. TOLERANCES ARE: SURFACE- TOLERANCES- .XX ±.02 .XXX ±.002 .XXXX ±.0010 ANGLES ±0°30'		DRAWN: H. Lim	05-20-99	GENERAL DYNAMICS SATCOM Technologies 3111 Fujita St., Torrance, CA 90505, (310) 539-6704			
		CHECKED:					
		ENGR:		Ku BAND FILTER 10.70 - 12.75 GHz			
		MFG:					
MATERIAL: AL ALY A356		QA:		SIZE: C	FSCM No. 50478	DWG No. 111960-7	REV B
		EAR CONTROLLED: Export or re-export subject to 15 CFR 700-799.		SCALE: X:X		SHEET 1	