

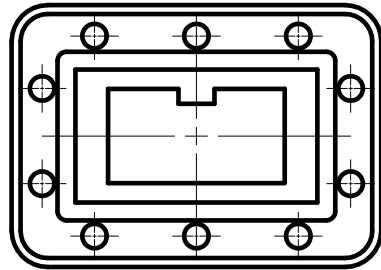
SPECIFICATIONS

FREQUENCY BAND: 3.625 - 4.200 GHz
INSERTION LOSS: 0.035 dB MAX
VSWR : 1.10:1 MAX
ISOLATION : 55 dB MIN AT 5.850-6.425 GHz

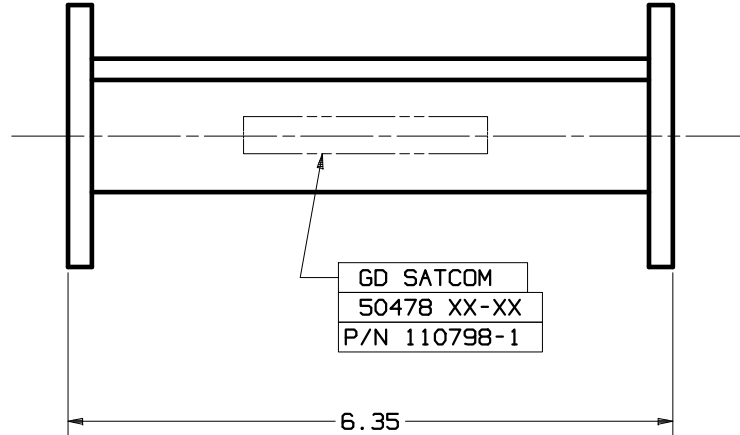
PRESSURIZATION : TESTED TO 5.0 PSI
TEMPERATURE RANGE: -40°C TO +80°C
FINISH: INTERIOR
 AND FLANGE FACES: CHROMATE CONVERSION
 COATED
 EXTERIOR: WHITE PAINT, COLOR
 NO. 17875 PER FED-STD-595

REVISIONS

REV	DESCRIPTION	DATE	APPROVED
E	SEE ECN #1171	10-30-06	J.K.



**CPR-229G
FLANGE PATTERN
TYPICAL BOTH ENDS**



UNLESS OTHERWISE SPECIFIED DIMENSIONS ARE IN INCHES TOLERANCES - SURFACE .XX ± .02 .XXX ± .005 64 .XXXX ± . ✓ ANGLE±	SIGNATURES DRAWN: TOVALIN CHECKED: H. SPIELEDER ENGRG: ENGRG:	DATE 10-07-94 08-20-96	GENERAL DYNAMICS PROPRIETARY GENERAL DYNAMICS SATCOM Technologies 3111 Fujita St., Torrance, CA 90505, (310) 539-6704
MATERIAL ALUMINUM FINISH	EAR CONTROLLED: Export or re-export subject to 15 CFR 700-799.	TRANSMIT REJECT FILTER C-BAND	
		SIZE C 50478	DWG No. 110798-1
		SCALE: 1:1	REV E
		SHEET 1	