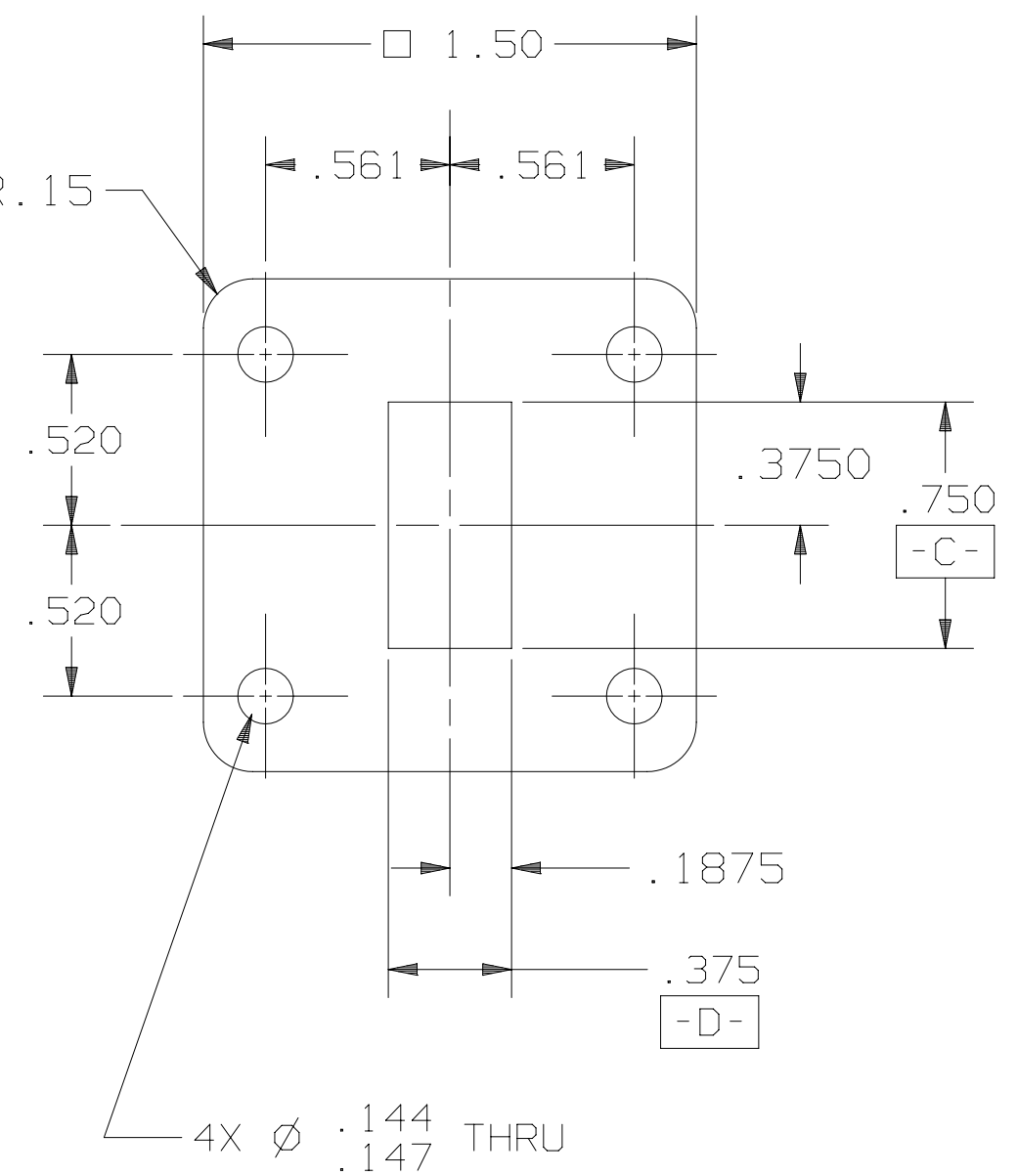
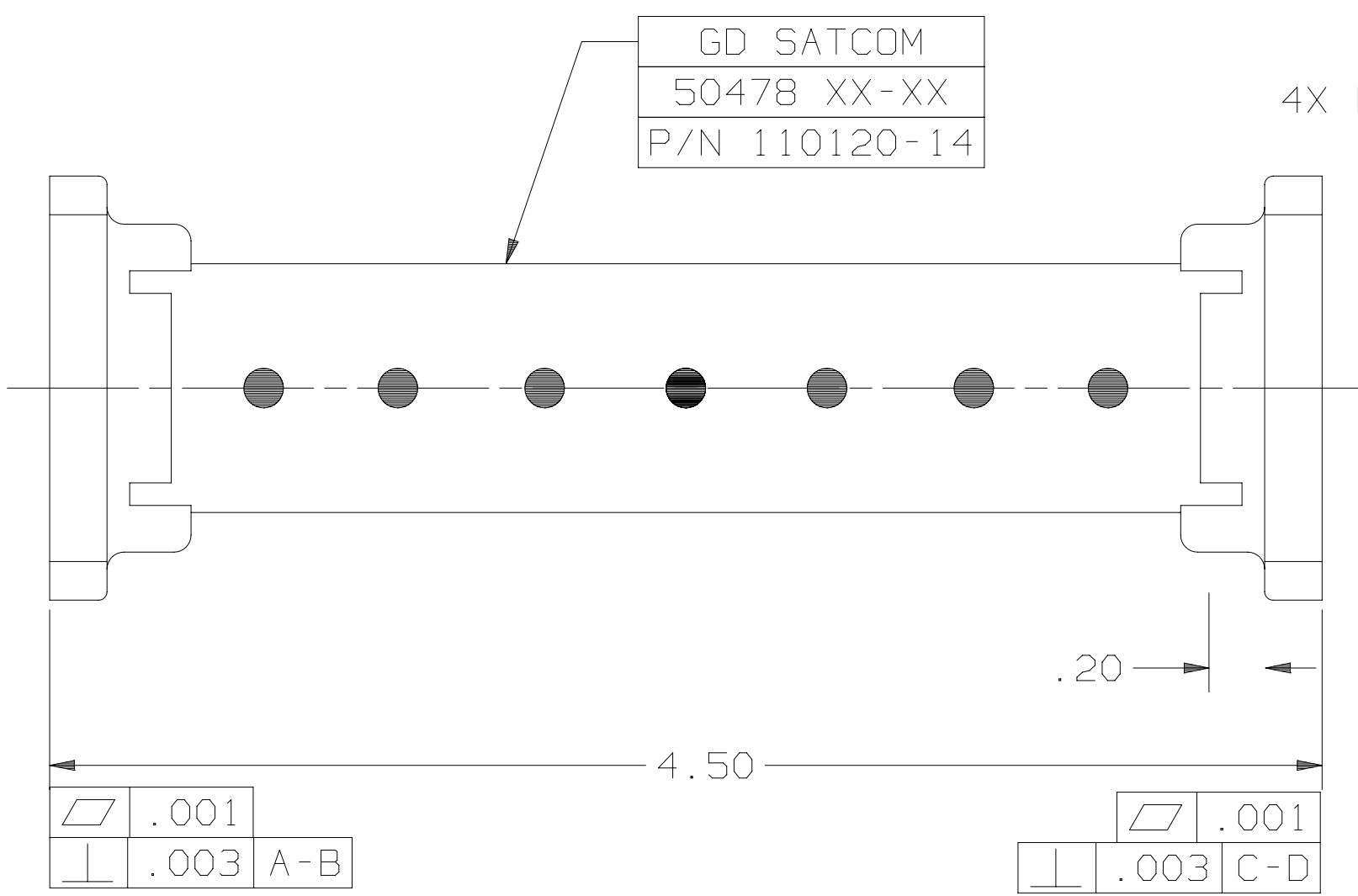
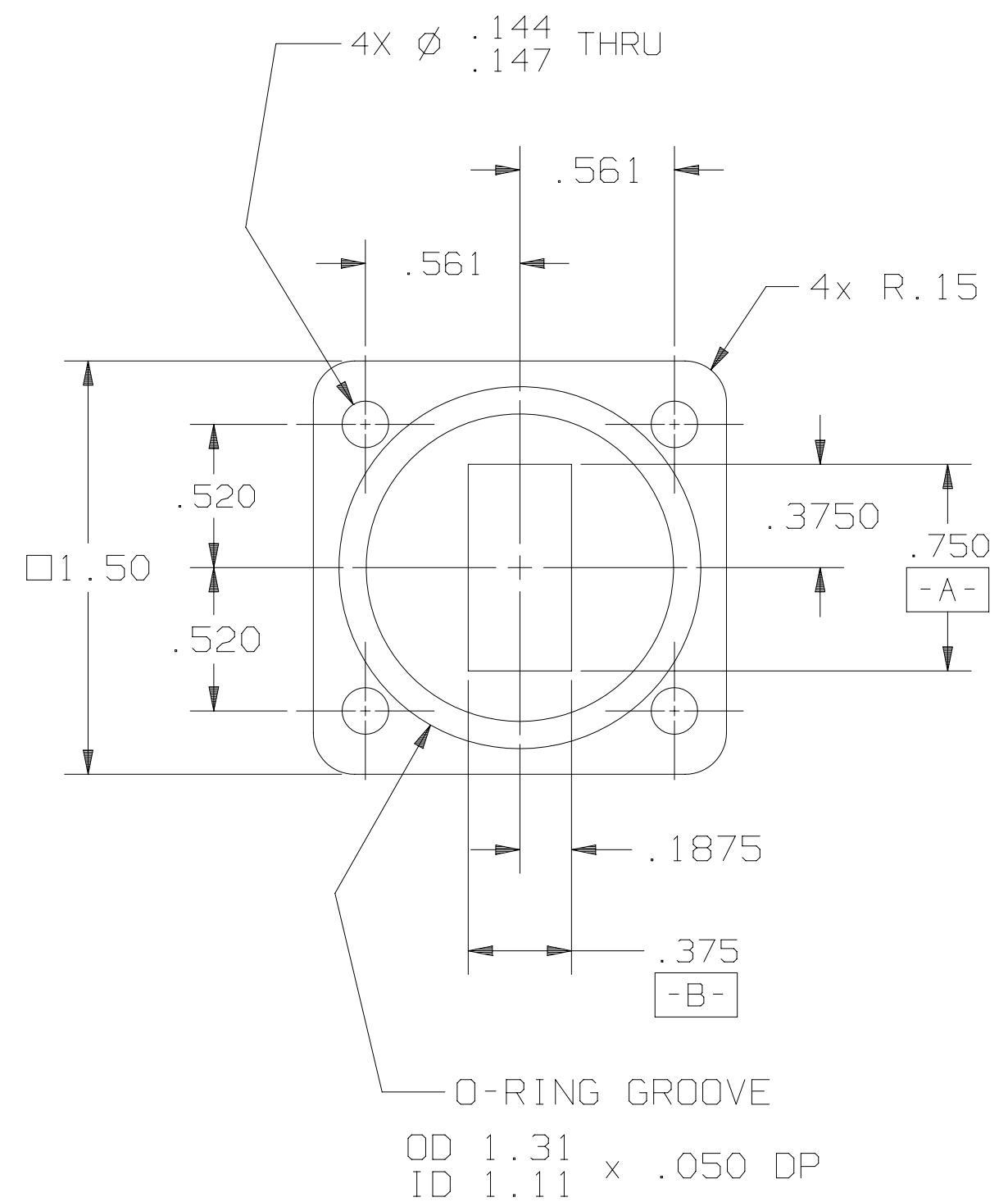


SPECIFICATIONS

FREQUENCY BAND : 13.75 - 14.50 GHz
 VSWR : 1.30:1 MAX
 INSERTION LOSS : 0.30 dB MAX
 ISOLATION : 70 dB MIN AT 10.70-12.75 GHz
 AND 50 dB MIN AT 13.05 GHz
 POWER HANDLING : 400 WATTS CW
 PRESSURIZATION : SEALED TO 5 PSI
 FINISH INTERIOR & FLANGE FACES: ZINC NICKEL PLATE PER AMS-2417G, TYPE II, CLASS 2
 EXTERIOR: WHITE PAINT, COLOR #17875 PER FED-STD-595

REVISIONS

REV	DESCRIPTION	DATE	APPROVED
B	REVISED PER DR 12265	22DEC12	



UNLESS OTHERWISE SPECIFIED	SIGNATURES	DATE	GENERAL DYNAMICS PROPRIETARY	
DIMENSIONS ARE IN INCHES	DRAWN: A. ROSS	11-28-07	GENERAL DYNAMICS	
TOLERANCES-	CHECKED: H. SPIELEDER		SATCOM Technologies	
SURFACE .XX ±.02	ENGRG:		3111 Fujita St., Torrance, CA 90505, (310) 539-6704	
.XXX ±.003	MFG:		Ku-BAND BANDPASS, FILTER	
32 ✓ .XXXX ±.0015			SIZE	FSCM No.
ANGLES±			C	50478
MATERIAL	EAR CONTROLLED:		DWG No.	110120-14
	Export or re-export subject to 15 CFR 700-799.		REV	B
FINISH			SCALE: 7:4	SHEET 1 of 2