

Precision waveguide loads

The series low power waveguide fixed terminations are precision, low VSWR terminations suited to a wide variety of precision laboratory applications. They can be used for full band one-port calibration and full two-port, isolation calibration.

Feature:

- High peak power,high precision
- Low VSWR
- Low cost, Fast delivery

Application :

- For T&M -Other Applications

Technical Specifications :

Peak Power 25KW (Max)

Avg. Power 25w(Max)

VSWR <1.05(Max)

Freq. up to 110GHz

Mechanical Specifications :

Material Al/Cu

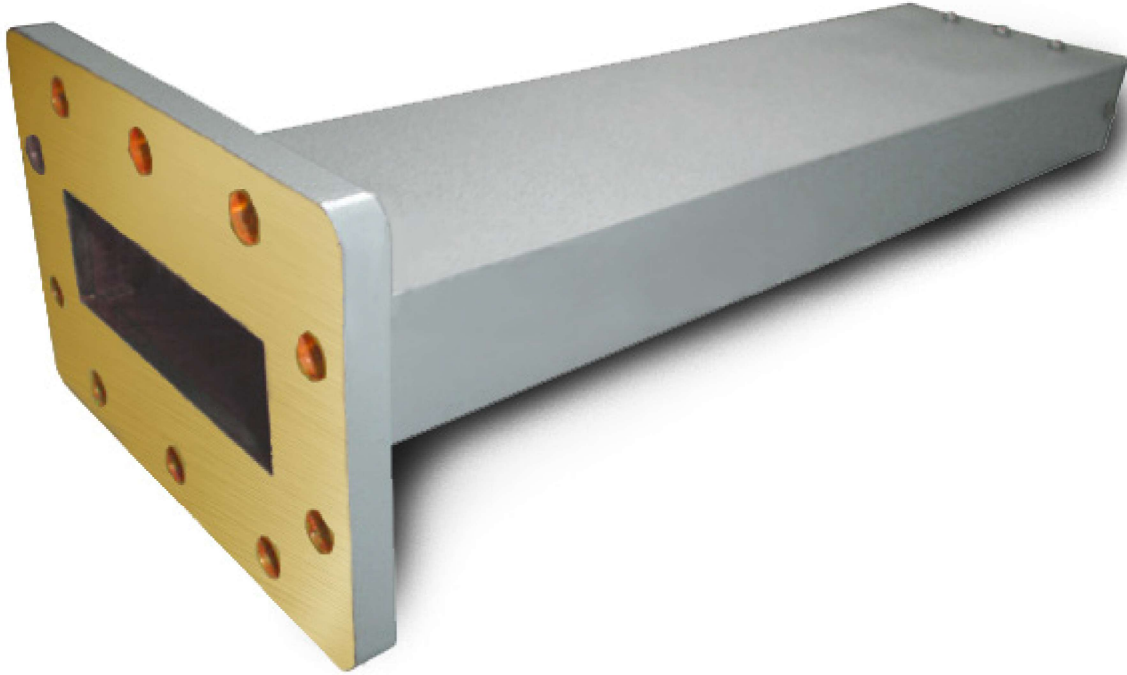
Length(mm) L

Environmental Specifications :

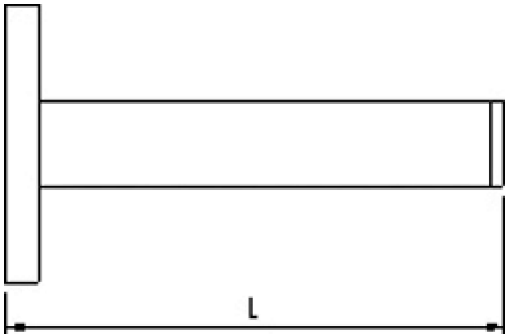
Operating Temperature

-20~+70□

Types:



Outline Drawing:



Model List :

Waveguide			Freq.	VSWR	Avg. Power	Peak Power	Overall Length	Material
E.I.A.	IEC	UK	(GHz)	(Max.)	(w)	(kw)	(mm)	
WR975	WG4	R9	0.75-1.12	1.05	25	25	900.5/35.4	Aluminum
WR770	WG5	R12	0.96-1.45	1.05	25	25	-	Aluminum
WR650	WG6	R14	1.12-1.70	1.04	25	25	495/19.5	Aluminum
WR510	WG7	R18	1.45-2.20	1.03	25	25	435/17.1	Aluminum
WR430	WG8	R22	1.70-2.60	1.025	15	15	376/14.8	Aluminum
WR340	WG9A	R26	2.20-3.30	1.025	12	12	320/12.6	Aluminum
WR284	WG10	R32	2.60-3.95	1.025	10	10	264/10.4	Aluminum
WR229	WG11A	R40	3.30-4.90	1.02	10	10	188/7.4	Aluminum
WR187	WG12	R48	3.95-5.85	1.02	8	8	163/6.4	Aluminum
WR159	WG13	R58	4.90-7.05	1.02	7	7	147/5.8	Aluminum
WR137	WG14	R70	5.85-8.20	1.02	6	6	132/5.2	Aluminum
WR112	WG15	R84	7.05-10.0	1.015	4	4	127/5	Aluminum
WR90	WG16	R100	8.20-12.4	1.015	4	4	127/5	Aluminum
WR75	WG17	R120	10.0-15.0	1.02	2	2	127/5	Aluminum
WR62	WG18	R140	12.4-18.0	1.02	1.5	1.5	102/4	Aluminum
WR51	WG19	R180	15.0-22.0	1.025	1	1	79/3.1	Brass
WR42	WG20	R220	18.0-26.5	1.025	0.5	0.5	71/2.8	Brass
WR34	WG21	R260	22.0-33.0	1.025	0.5	0.5	63.5/2.5	Brass
WR28	WG22	R320	26.5-40.0	1.025	0.5	0.5	56/2.2	Brass
WR22	WG23	R400	33.0-50.0	1.04	0.5	0.5	41/1.6	Brass
WR19	WG24	R500	40.0-60.0	1.03	0.3	0.3	41/1.6	Brass
WR15	WG25	R620	50.0-75.0	1.025	0.3	0.1	38/1.5	Brass
WR12	WG26	R740	60.0-90.0	1.03	0.2	0	38/1.5	Brass
WR10	WG27	R900	75.0-110.0	1.03	0.2	0	38/1.5	Brass

Test curve :

Note:

You could choice Flange type,



SatelliteDish.com®

(954) 941-8883