

## Waveguide Formed Bends



## Waveguide Formed Bends Description

- 1.70 - 40.00 GHz Standard Frequencies
- Low Insertion Loss
- Low VSWR
- Material Copper/Bronze or Aluminum (6061) waveguide

Quality waveguide in a flash! Our waveguide sections are manufactured to our customer's specifications.

All components are produced with the highest quality available. We insure our quality through a ISO9001 / AS9100 certified quality system.

All the parts are painted flat black and flanges are polished, unplated and iridited. We offer additional upgrades on paint.

### WAVEGUIDE FLANGES:

**A** = AMC QUICK DISCONNECT (MALE) PATENT PROTECTED

**B** = AMC QUICK DISCONNECT (FEMALE) PATENT PROTECTED

**C** = MODIFIED CPR STYLE - GROOVE ONLY, NO CONTACTS (CLEAR HOLES)

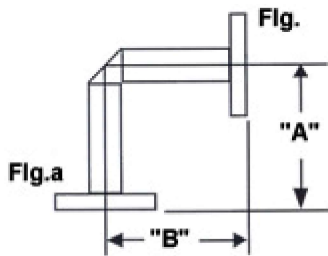
**D** = MODIFIED CPR STYLE - GROOVE ONLY, NO CONTACTS (ALL TAP HOLES)

**E** = CPR STYLE FLAT (ALL TAP HOLES)

**F** = CPR STYLE FLAT (CLEAR HOLES)

**G** = CPR STYLE CONTACT GROOVED (CLEAR HOLES)

<b>H = CPR STYLE CONTACT GROOVED (ALL TAP HOLES)</b>
<b>I = CMR (CLEAR HOLES)</b>
<b>J = CMR (ALT/ TAP,/CLEAR HOLES)</b>
<b>K = CMR (ALL TAP HOLES)</b>
<b>L = UG COVER (CLEAR HOLES)</b>
<b>M = UG COVER (ALL TAP HOLES)</b>
<b>N = UG COVER GROOVED (ALL CLEAR HOLES)</b>
<b>O = UG CHOKE (CLEAR HOLES)</b>
<b>P = UG CHOKE (ALL TAP HOLES)</b>
<b>Q = UG COVER GROOVED (ALL TAP HOLES)</b>
<b>R = UBR</b>
<b>S = PBR</b>
<b>T = CBR</b>
<b>U = UDR</b>
<b>V = PDR</b>
<b>W = CDR</b>
<b>X = SPECIAL FLANGES (CUSTOMER TO SPECIFY)</b>



**WAVEGUIDE SIZE**

<b>WR SIZE</b>	<b>FREQ (GHZ)</b>	<b>MIN. DIM. "E-BEND"</b>	<b>MIN. DIM "H-BEND"</b>
28	26.5 - 40.0	0.50	0.62
34	22.0 - 33.0	0.50	0.62
42	18.0 - 26.5	0.50	0.62
51	15.0 - 22.0	0.50	0.62
62	12.4 - 18.0	0.50	0.62
75	10.0 - 15.0	0.62	0.75
90	8.20 - 12.4	0.75	0.75

102	7.00 - 11.0	0.88	1.00
112	7.05 - 10.0	0.88	1.00
137	5.85 - 8.20	1.00	1.25
159	4.90 - 7.05	1.25	2.00
187	3.95 - 5.85	1.50	2.25
229	3.30 - 4.90	2.00	2.50
284	2.60 - 3.95	2.50	3.00
430	1.70 - 2.60	6.00	8.00

**Note:** All models include an iridite / corrosion protection Treatment and are painted flat black, flanges are unplated, Iridited and polished. For other flange finishes, materials or Paint color requirements, please specify.: All models include an iridite/corrosion protection Treatment and are painted flat black, flanges are unplated, Iridited and polished. For other flange finishes, materials or Paint color requirements, please specify.

**SAMPLE P/N: AMC-EB137-G/G-2.25x2.25B**

MODEL NUMBER EB= E BEND HB= H BEND	WAVEGUIDE SIZE	FLANGE TYPE A+B	LEG DIMENSION A+B	MATERIAL A=Alum. B=Brass
AMC-EB	137	G/G	2.25x2.25	B

The above referenced part number describe the following item: WR 137 "E" formed bend, with CPRG flanges, legs = 2.25" Made of copper

