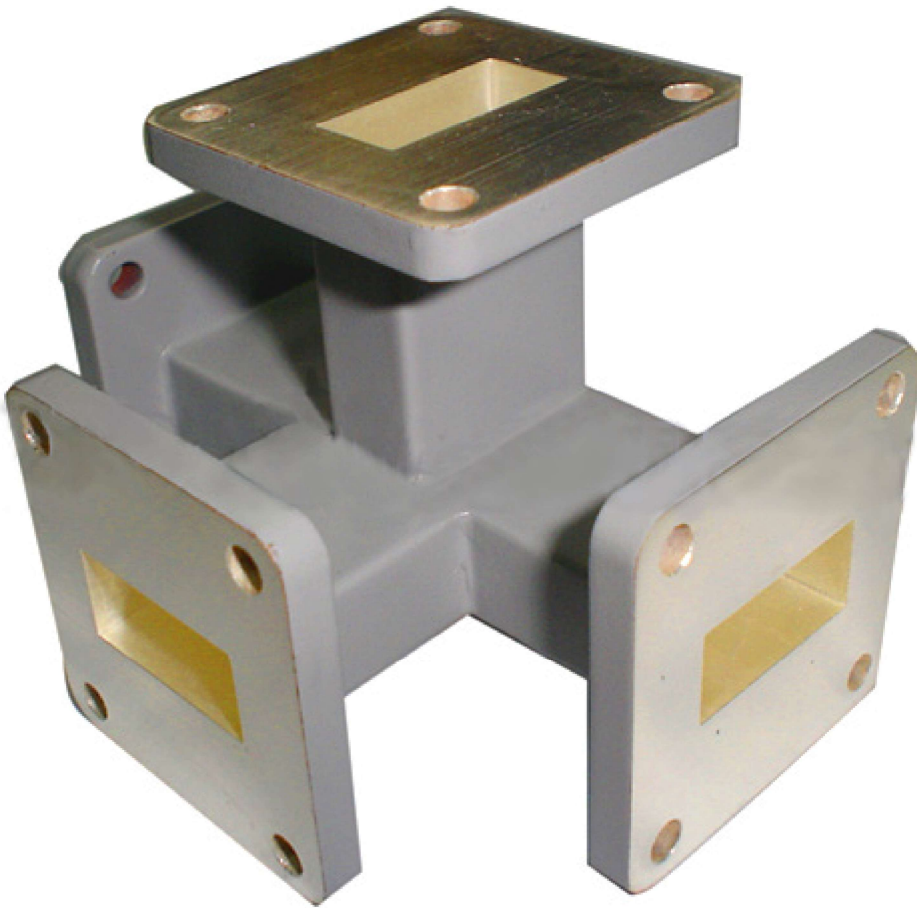
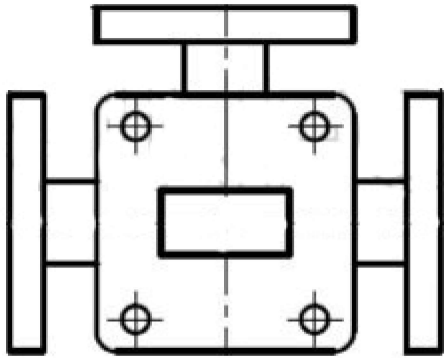


Waveguide Tee We offer a broad line of tees to fit a variety of waveguide sizes, and generally superior features: Good unbalance, Good Isolation, Low cost. Application: Phased array radar, missile guidance, power synthesis system. Other Technical Specifications: Unbalance (dB)  $\pm 0.25$  VSWR (Max) 1.5 (Min) Mechanical Specifications: Material Al/Cu Finish silver/gold/nickel/passivation conductive oxide and Specifications: Operating Temperature  $-55 \sim +85$

Types :



Outline Drawing :



Model List :

Waveguide			Frequency Range (GHz)	Bandwidth	VSWR Max.	Isolation (dB)	Imbalance (dB)	Material
E.I.A.	IEC	UK						
WR2300	NONL	R3	0.32-0.49	10%-20%	H-plane=1.20 E-plane=1.50	>35	±0.25	Al
WR2100	NONI	R4	0.35-0.51	10%-20%	H-plane=1.20 E-plane=1.50	>35	±0.25	Al
WR1800	WG1	R5	0.41-0.57	10%-20%	H-plane=1.20 E-plane=1.50	>35	±0.25	Al
WR1500	WG2	R6	0.49-0.75	10%-20%	H-plane=1.20 E-plane=1.50	>35	±0.25	Al
WR1150	WG3	R8	0.64-0.93	10%-20%	H-plane=1.20 E-plane=1.50	>35	±0.25	Al
WR975	WG4	R9	0.75-1.15	10%-20%	H-plane=1.20 E-plane=1.50	>35	±0.25	Al
WR770	WG5	R12	0.96-1.43	10%-20%	H-plane=1.20 E-plane=1.50	>35	±0.25	Al
WR650	WG6	R14	1.13-1.73	10%-20%	H-plane=1.20 E-plane=1.50	>35	±0.25	Al
WR510	WG7	R18	1.45-2.20	10%-20%	H-plane=1.20 E-plane=1.50	>35	±0.25	Al
WR430	WG8	R22	1.72-2.51	10%-20%	H-plane=1.20 E-plane=1.50	>35	±0.4	Al/Cu
WR340	WG9A	R26	2.17-3.30	10%-20%	H-plane=1.20 E-plane=1.50	>35	±0.4	Al/Cu
WR284	WG10	R32	2.60-3.95	10%-20%	H-plane=1.20 E-plane=1.50	>35	±0.4	Al/Cu
WR220	WG11A	R40	3.22-4.90	10%-20%	H-plane=1.20 E-plane=1.30	>35	±0.4	Al/Cu
WR187	WG12	R48	3.94-5.90	10%-20%	H-plane=1.20 E-plane=1.30	>35	±0.4	Al/Cu
WR159	WG13	R58	4.64-7.05	10%-20%	H-plane=1.20 E-plane=1.30	>35	±0.4	Al/Cu
WR137	WG14	R70	5.38-8.17	10%-20%	H-plane=1.20 E-plane=1.30	>35	±0.4	Al/Cu
WR112	WG15	R84	6.57-9.99	10%-20%	H-plane=1.20 E-plane=1.30	>35	±0.4	Al/Cu
WR90	WG16	R100	8.20-12.4	10%-20%	H-plane=1.20 E-plane=1.30	>35	±0.4	Al/Cu
WR75	WG17	R120	9.84-15.0	10%-20%	H-plane=1.20 E-plane=1.30	>35	±0.4	Al/Cu
WR62	WG18	R140	11.9-18.0	10%-20%	H-plane=1.20 E-plane=1.50	>35	±0.4	Al/Cu
WR51	WG19	R180	14.5-22.0	10%-20%	H-plane=1.20 E-plane=1.50	>35	±0.4	Al/Cu
WR42	WG20	R220	17.8-26.7	10%-20%	H-plane=1.20 E-plane=1.50	>30	±0.4	Al/Cu
WR34	WG21	R260	21.7-33.0	10%-20%	H-plane=1.20 E-plane=1.50	>30	±0.4	Al/Cu
WR28	WG22	R320	26.5-40.0	10%-20%	H-plane=1.20 E-plane=1.50	>30	±0.4	Al/Cu
WR22	WG23	R400	32.9-50.1	10%-20%	H-plane=1.20 E-plane=1.50	>30	±0.5	Cu
WR19	WG24	R500	39.2-59.0	10%-20%	H-plane=1.20 E-plane=1.50	>30	±0.5	Cu
WR15	WG25	R620	49.0-75.0	10%-20%	H-plane=1.20 E-plane=1.50	>30	±0.5	Cu
WR12	WG26	R740	60.5-91.9	10%-20%	H-plane=1.20 E-plane=1.50	>30	±0.5	Cu
WR10	WG27	R900	73.0-112	10%-20%	H-plane=1.20 E-plane=1.50	>30	±0.5	Cu

Test curve :

Note :

You could choose Flange type



**SatelliteDish.com**®

(954) 941-8883

