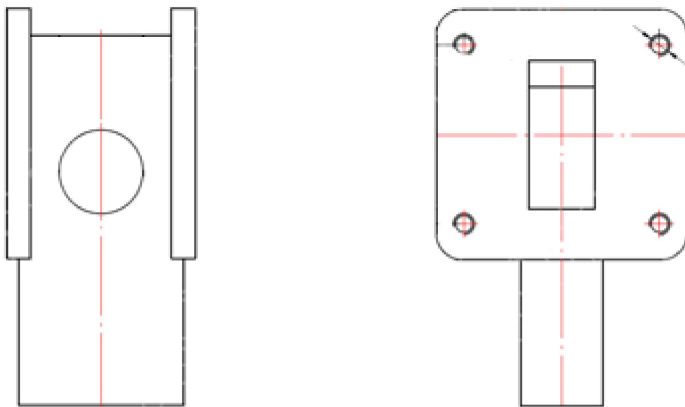


Waveguide Isolator We offer a line of Waveguide Isolators in various sizes and frequency bands. Reliability, cost and manufacturability are optimized at the design stage. Feature : Low cost, Fast delivery Application: For T&M Other Applications Technical Specifications: Freq.(GHZ) up to 27 Isolation(dB) 300(Max) Insertion Loss 0.4(Typ.) Bandwidth FULL Average Power(w) 200(Max) Mechanical specifications: Material Al/Cu Environmental Specifications : Operating Temperature -40°C ~ $+70^{\circ}\text{C}$ (Typ.)

Types :



Outline Drawing:



Model List :

Waveguide			Freq. Range (GHz)	VSWR Max.	Bandwidth(MHZ)	Insertion Loss(dB)	Isolation(dB)	Average Power (W)	Operating Temp.(°C)
E.I.A.	IEC	UK							
WR284	WG10	R32	3.13-3.47	1.25	Full	0.5	20	200	-55~+85
WR112	WG15	R34	7.4-8.5	1.3	Full	0.5	18	10	-40~+70
WR112	WG15	R34	7.5-7.9	1.25	Full	0.3	20	50	-
WR90	WG16	R100	8.0-10.5	1.3	Full	0.6	18	10	-40~+70
WR90	WG16	R100	8.5-9.5	1.3	Full	0.6	18	10	-40~+70
WR90	WG16	R100	10.0-10.3	1.2	Full	0.4	22	200	-55~+85
WR75	WG17	R120	12.5-13.5	1.2	500	0.4	22	10	-45~+75
WR62	WG10	R140	13.0-16.0	1.2	1000	0.4	20	100	-40~+70
WR62	WG18	R140	13.0-16.0	1.2	600	0.3	22	30	-55~+85
WR51	WG19	R180	16.0-17.0	1.18	500	0.5	25	100	-55~+85
WR42	WG20	R220	18.0-26.5	1.25	1000	0.4	20	10	-40~+70
WR42	WG20	R220	21.0-23.0	1.25	2000	0.5	20	10	-40~+70
WR42	WG20	R220	19.6-21.6	1.25	2000	0.4	20	15	-40~+70
WR34	WG21	R260	25.0-27.0	1.25	Full	0.4	20	10	-40~+70

Test curve:

Note:
Flange type

