

C-Band 500 kW Crossed-Field Amplifier

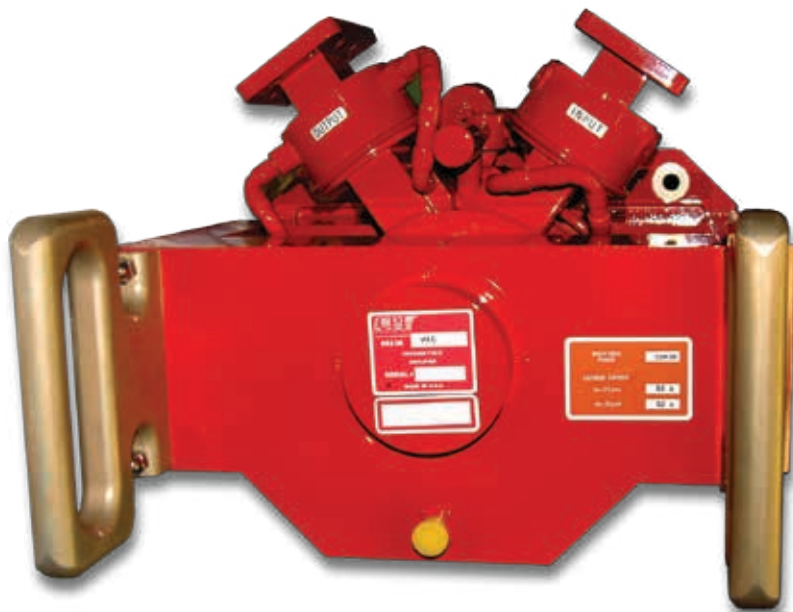
VXC1606

Features:

- Frequency: 5.4 - 5.9 GHz
- Peak Power: 500 kW
- Duty Cycle: 0.0025
- Pulsewidth: 3.5 μ Sec
- Anode voltage 27 kV
- Cold cathode
- Water cooled

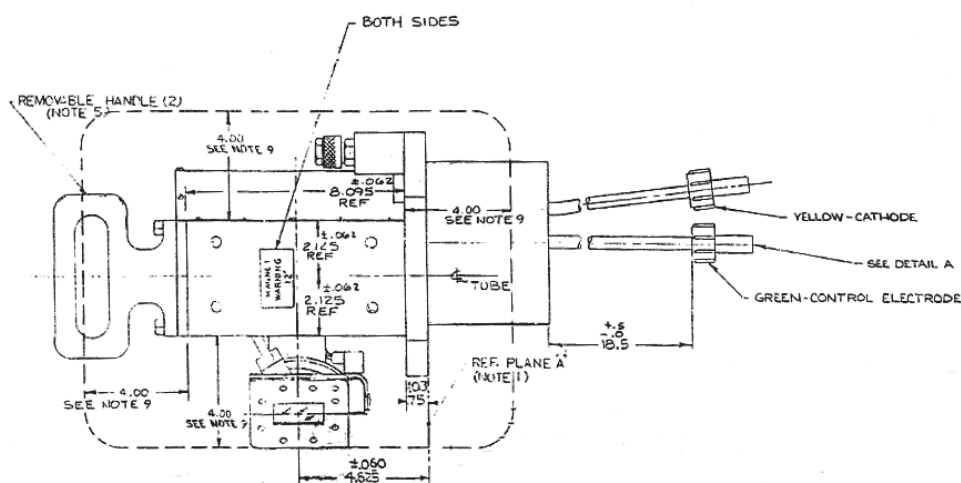
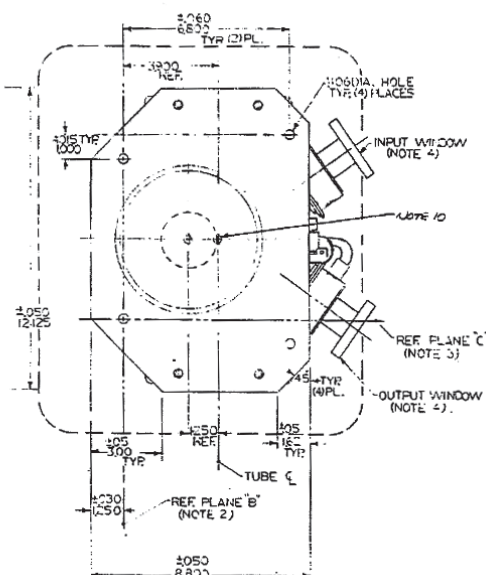
Benefits:

- High peak power
- Wide bandwidth



Applications:

- Ground based radar



The values listed above represent specified limits for the product and are subject to change. The data should be used for basic information only. Formal, controlled specifications may be obtained from CPI for use in equipment design.

For information on this and other CPI products visit our webpage at www.cpii.com/bmd, or contact:
CPI Beverly Microwave Division, +1 (978) 922-6000 • FAX: +1 (978) 922-8914 • bmdmarketing@cpil.com