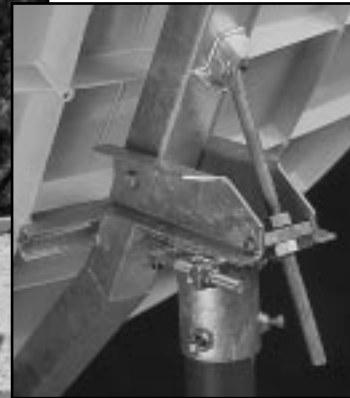


1.2m Receive-Transmit Offset Antenna System



*Heavy-duty galvanized
Az/EI mount*

FEATURES

- One-piece precision offset thermoset-molded reflector.
- Fine azimuth and elevation adjustments.
- Galvanized support arm and alignment struts.
- Factory pre-assembled mount.
- Galvanized and stainless hardware for maximum corrosion resistance.
- Available with a variety of Ku-Band Rx-Tx feed assemblies and ODU mounting kits.

DESCRIPTION

The Andrew Corporation Type 124 1.2m Offset Rx-Tx Antenna is a rugged commercial grade product suitable for the most demanding applications. The reflector is thermoset-molded for strength and surface accuracy. Molded into the rear of the reflector is a network of support ribs which not only strengthens the antenna, but also helps to sustain the critical parabolic shape necessary for transmit performance. The reflector optics feature a long focal length for excellent cross-pol performance, required by many satellite operators.

The Az/EI mount is constructed from heavy-gauge steel to provide a rigid support to the reflector. The Az/EI mount secures the antenna to any 2.88 in - 3.00 in. O.D. mast and prevents slippage in high winds. Hot-dip galvanizing is standard for maximum environmental protection.

1.2m Receive-Transmit Offset Antenna System

RF PERFORMANCE

Effective Aperture		1.2m (48 in.)
Operating Frequency	Tx	13.75 - 14.50 GHz
	Rx	10.70 - 12.75 GHz
Polarization		Linear, Orthogonal
Gain (± 2 dBi)	Tx	43.3 dBi @ 14.25 GHz
	Rx	41.8 dBi @ 11.95 GHz
3 dB Beamwidth	Tx	1.2° @ 14.3 GHz
	Rx	1.5° @ 12.0 GHz
Sidelobe Envelope (Tx, Co-Pol dBi)		
		1.5° < θ < 20°
		20° < θ < 26.3°
		26.3° < θ < 48°
		48° < θ < 180°
Antenna Cross-Polarization		≥30 dB in 1 dB Contour
Antenna Noise Temperature	10° EI	45°K
	20° EI	31°K
	30° EI	24°K
VSWR		1.3:1 Max.
Isolation	Tx	70 dB min
	Rx	35 dB min
Feed Interface	Tx	WR75 Cover Flange (UBR120)
	Rx	WR75 Cover Flange (UBR120)

MECHANICAL PERFORMANCE

Reflector Material		Glass Fiber Reinforced Polyester
Antenna Optics		One-Piece Offset Feed Prime Focus - Long Focal Length
Mount Type		Elevation over Azimuth
Elevation Adjust. Range		10°-90° Continuous Fine Adjustment
Azimuth Adjust. Range		360° Continuous; $\pm 20^\circ$ Fine Adjustment
Mast Pipe Interface		2.88-3.00 in. (73-76 mm) Diameter
Wind Loading	Operational	50 mi/h (80 km/h)
	Survival	125 mi/h (200 km/h)
Temperature		-50°C to 80°C
Humidity		0 to 100% (Condensing)
Atmosphere		Salt, Pollutants and Contaminants as Encountered in Coastal and Industrial Areas
Solar Radiation		360 BTU/h/ft ²
Shock and Vibration		As Encountered During Shipping and Handling



Connecting the Wireless World

Andrew Corporation
10500 W. 153rd Street
Orland Park, IL 60462 USA

Customer Support Center
1315 Industrial Park Drive
Smithfield, NC 27577 USA
Telephone +1-919-989-2205
Fax: +1-919-989-2200

Internet
www.andrew.com

All designs, specifications and availabilities of products and services presented in this bulletin are subject to change without notice.

Bulletin 11028 (1/04) Copyright © 2004
Andrew Corporation, Orland Park, IL 60462 USA

Printed in USA