

Short dimension waveguide load

Our High-performance waveguide loads are a low VSWR (1.03:1 typ.) used to terminate a waveguide run.

Feature:

- Full Waveguide Frequency Range
- Low VSWR
- Low cost, Fast delivery

Application :

- For T&M
- Other Applications

Technical Specifications :

Freq.(GHz) up to 112

VSWR (Max) <1.15(MAX)

Mechanical Specifications :

Material Al/Cu

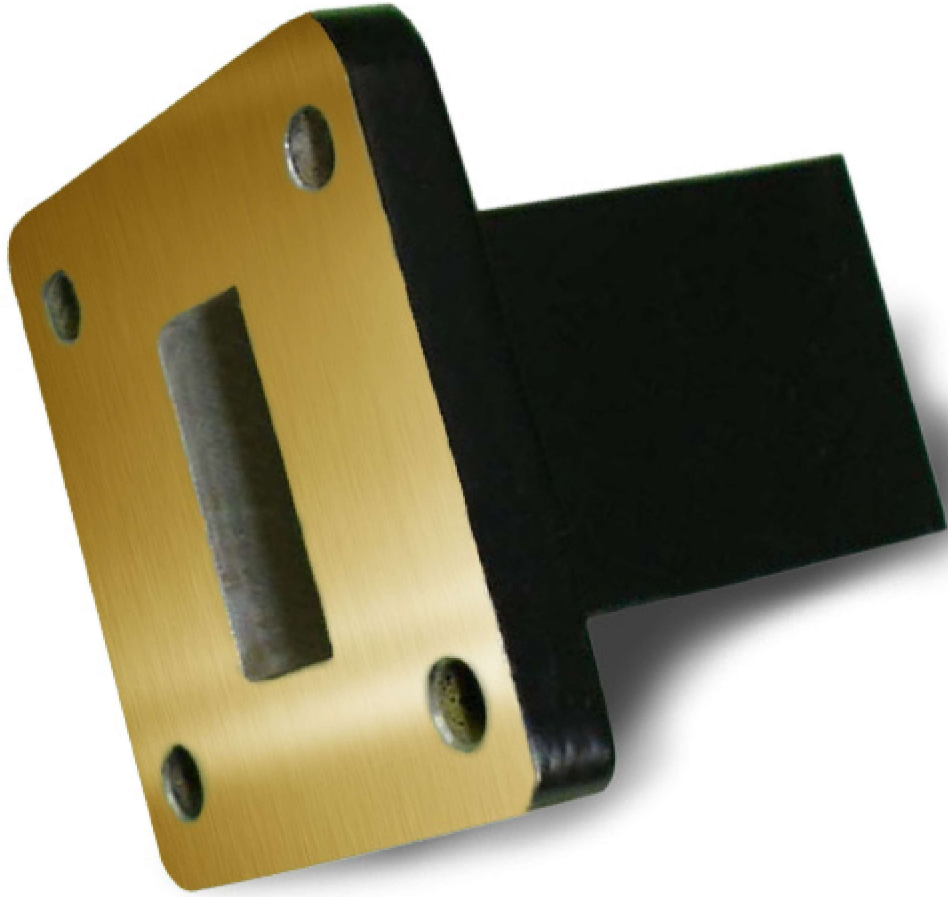
Length(mm) L

Finish Gray or other

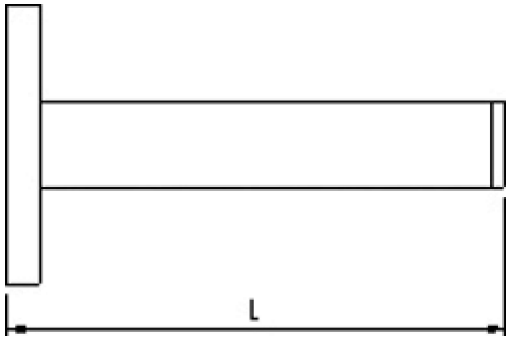
Environmental Specifications :

Operating Temperature -20~+70°C

Types:



Outline Drawing:



Model List:

Freq. (GHz)	VSWR (Max.)	Overall Length (mm)	Waveguide			Material
			E.I.A.	IEC	UK	
73.8-112	1.15	60	WR10	WG27	R900	Brass
60.5-91.9	1.15	38	WR12	WG26	R740	Brass
49.8-75.8	1.15	25	WR15	WG25	R620	Brass
39.2-59.6	1.1	55	WR19	WG24	R500	Brass
32.9-50.1	1.06	60	WR22	WG23	R400	Brass
26.5-40.0	1.03	40	WR28	WG22	R320	Aluminum/Brass
21.7-33.0	1.03	55	WR34	WG21	R260	Aluminum/Brass
17.6-26.7	1.03	85	WR42	WG20	R220	Aluminum/Brass
14.5-22.0	1.03	75	WR51	WG19	R180	Aluminum/Brass
11.9-18.0	1.03	90	WR62	WG18	R140	Aluminum/Brass
9.84-15.0	1.03	110	WR75	WG17	R120	Aluminum/Brass
8.20-12.40	1.03	130	WR90	WG16	R100	Aluminum/Brass
6.57-9.99	1.03	80	WR112	WG15	R84	Aluminum/Brass
5.38-8.17	1.03	180	WR137	WG14	R70	Aluminum/Brass
4.64-7.05	1.03	135	WR159	WG13	R58	Aluminum/Brass
3.94-5.99	1.03	170	WR187	WG12	R48	Aluminum/Brass
3.22-4.90	1.03	275	WR229	WG11A	R40	Aluminum/Brass
2.60-3.95	1.03	278	WR284	WG10	R32	Aluminum/Brass
2.17-3.30	1.03	350	WR340	WG9A	R26	Aluminum/Brass
1.72-2.61	1.03	470	WR430	WG8	R22	Aluminum/Brass
1.45-2.20	1.03	550	WR510	WG7	R18	Aluminum/Brass
1.13-1.73	1.03	570	WR650	WG6	R14	Aluminum
0.96-1.46	1.05	680	WR770	WG5	R12	Aluminum
0.75-1.15	1.05	660	WR975	WG4	R9	Aluminum
0.64-0.98	1.05	1100	WR1150	WG3	R8	Aluminum
0.49-0.75	1.05	1300	WR1500	WG2	R6	Aluminum
0.41-0.62	1.05	1600	WR1800	WG1	R5	Aluminum
0.35-0.53	1.05	1900	WR2100	NONE	R3	Aluminum
0.32-0.49	1.05	2005	WR2300	NONE	R3	Aluminum

Test curve :

Note:

You could choice Flange type

