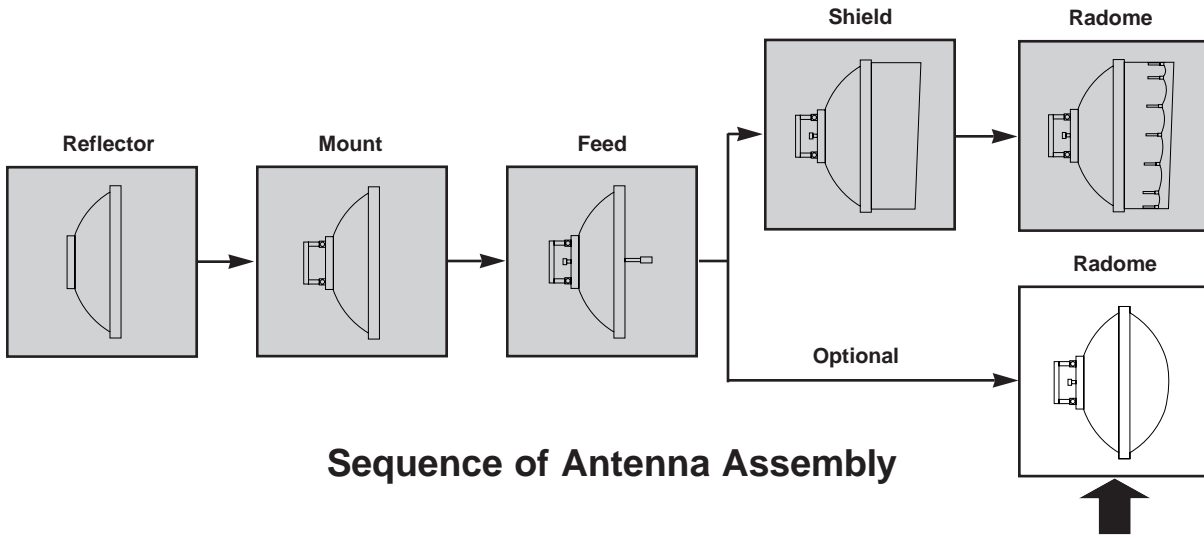


Standard, Heavy Duty, and Extended Type
Molded Radomes
 for Standard and Focal Plane Parabolic Antennas



Sequence of Antenna Assembly

Description

These radomes reduce the windload on standard and focal plane antennas, and protect the feeds from weather and physical damage.

Weights and measurements are included here to help you determine how many people will be needed to lift the radome for placement on the reflector.

Notice

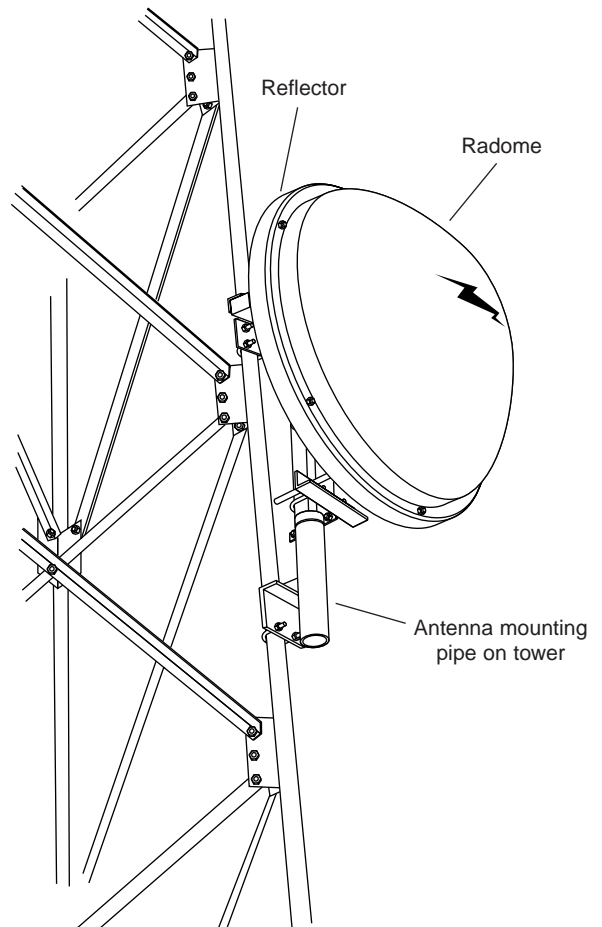
The installation, maintenance, or removal of antenna systems requires qualified, experienced personnel. Andrew installation instructions have been written for such personnel. Antenna systems should be inspected once a year by qualified personnel to verify proper installation, maintenance, and condition of equipment.

Andrew disclaims any liability or responsibility for the results of improper or unsafe installation practices.

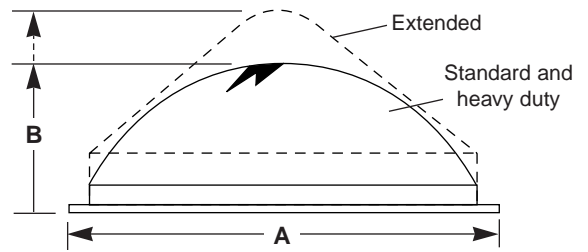
Tools

Standard hand tools can be used for this installation. A ratchet and deep well wrench sockets are recommended. However, combination wrenches, box or open-end type, may be used. Wrench sizes for the furnished bolt hardware are as follows:

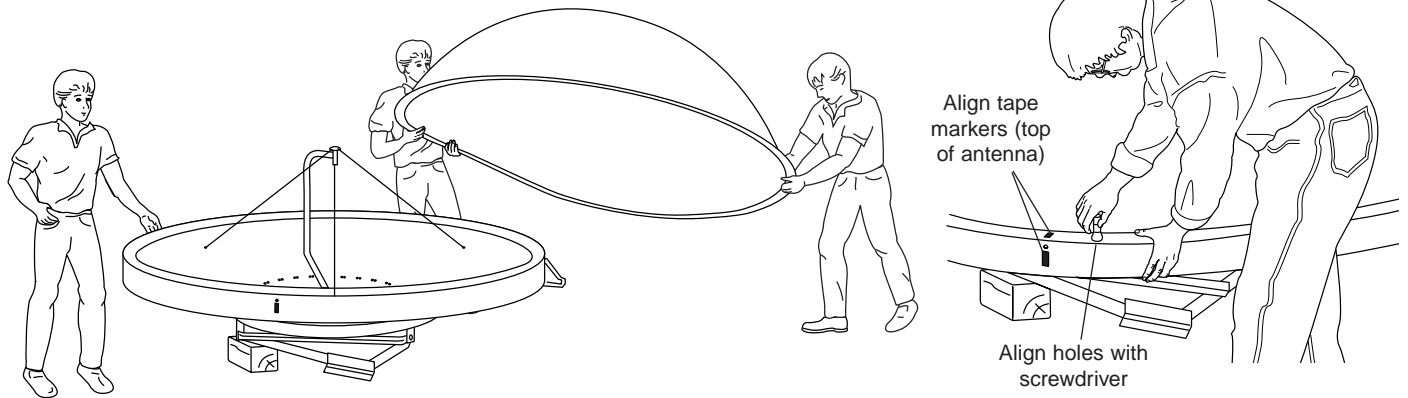
Radome size	Wrench size	Bolt size
0.6-3.0 m (2-10ft)	10 mm	M6
3.7 m (12 ft)	13 mm	M8



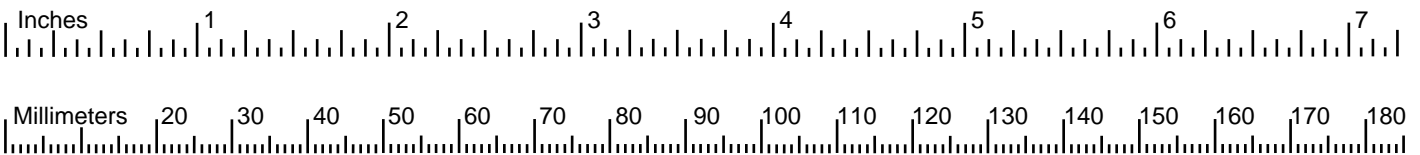
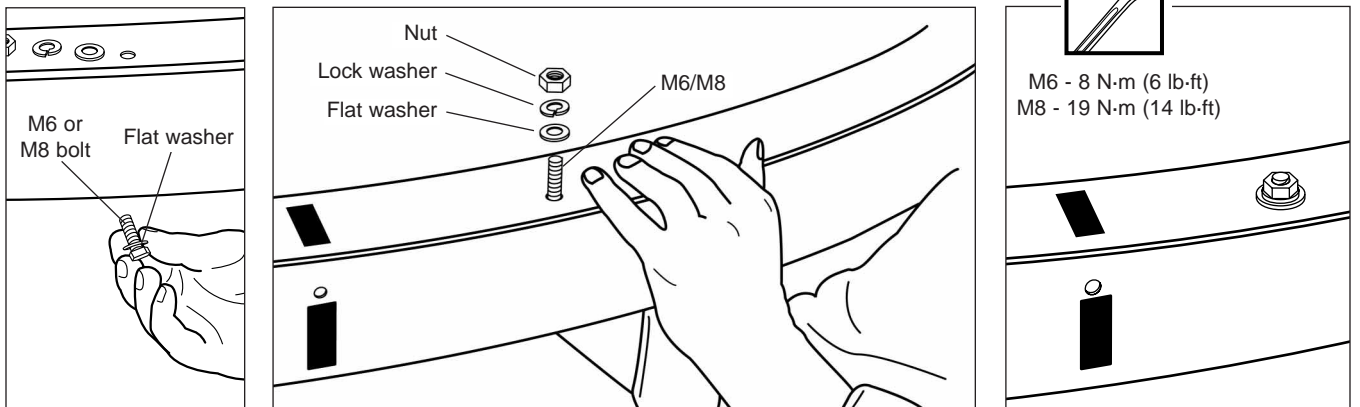
Radome		Net weight		Dimension A		Dimension B		Mounting holes
m	ft	kg	lb	mm	in	mm	in	
Standard								
0.6	2	2	4	705	27.75	305	12	6
1.2	4	6	13	1283	50.5	470	18.5	6
1.8	6	16	36	1930	76	692	27.25	9
2.4	8	34	74	2515	99	908	35.75	12
3.0	10	41	90	3124	123	832	32.75	16
3.7	12	67	147	3772	148	940	37	18
Heavy Duty								
3.0	10	49	107	3124	123	838	33	16
3.7	12	77	170	3772	148	940	37	18
Extended								
2.4	8	25	54	1930	76	940	37	12



1



2



SatelliteDish.com (954) 941-8883

Andrew Corporation
10500 West 153rd Street
Orland Park, IL U.S.A. 60462

Telephone: 708-349-3300
FAX (U.S.A.): 1-800-349-5444
Internet: <http://www.andrew.com>

Customer Service, 24 hours: U.S.A. • Canada • Mexico: 1-800-255-1479
U.K.: 0800 250055 • Republic of Ireland: 1 800 535358
Other Europe: +44 1592 782612

Printed in U.S.A. 7/97

Copyright © 1997 by Andrew Corporation