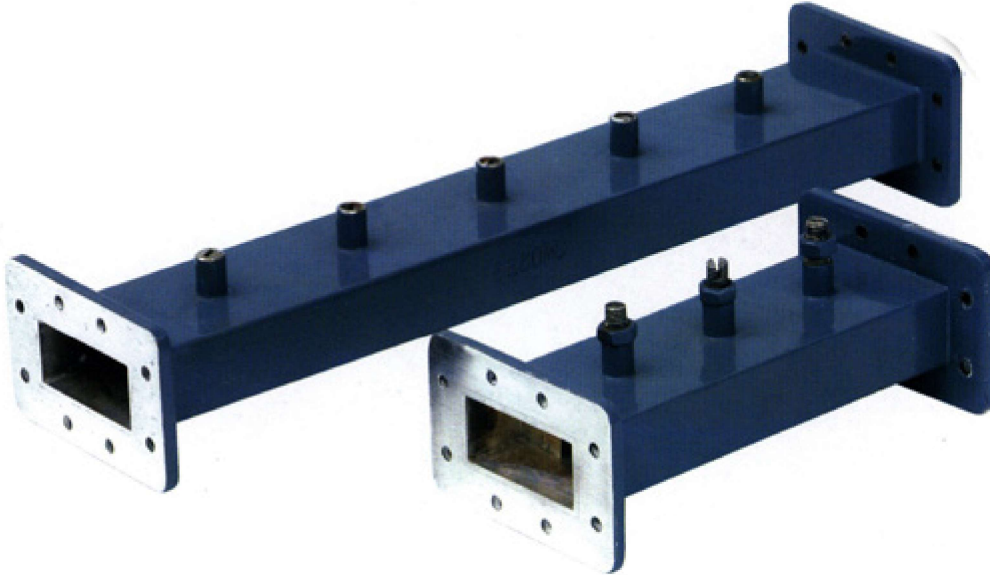
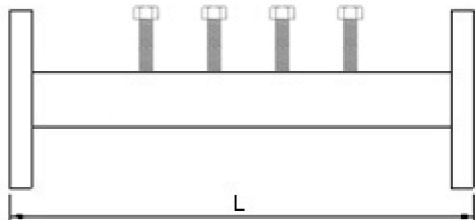


Low Pass Waveguide Filter Our series of Low Pass filters provides high rejection levels and steep slopes at frequencies above the band edge or corner frequency. Feature low insertion loss  
2015-6-10 9:32:16  
Application : Phased array radar, missile guidance, high-gain antenna and power synthesis system  
Other Technical Specifications Isolation (dB) 60 Insertion loss 0.3VSWR (dB) 1.2(Max) Mechanical Material Al/Cu Environmental Specifications : Operating Temperature -55~+85

Types :



Outline Drawing :



Model List :

Waveguide			Frequency Range (GHz)	VSWR Max.	Insertion Loss(dB)	Isolation(dB)	Material
E.I.A.	IEC	UK					
WR229	WG11	R40	3.22-4.90	1.2	0.3	60	Al/Cu
WR187	WG12	R48	3.94-5.99	1.2	0.3	60	Al/Cu
WR159	WG13	R58	4.64-7.05	1.2	0.3	60	Al/Cu
WR137	WG14	R70	5.38-8.17	1.2	0.3	60	Al/Cu
WR112	WG15	R84	6.57-9.99	1.2	0.3	60	Al/Cu
WR90	WG16	R100	8.20-12.40	1.2	0.3	60	Al/Cu
WR75	WG17	R120	9.84-15.0	1.2	0.3	60	Al/Cu
WR62	WG18	R140	11.9-18.0	1.2	0.35	60	Al/Cu
WR51	WG19	R180	14.5-22.0	1.2	0.35	60	Al/Cu
WR42	WG20	R220	17.6-26.7	1.2	0.5	60	Al/Cu
WR34	WG21	R260	21.7-33.0	1.2	0.5	60	Al/Cu
WR28	WG22	R320	26.5-40.0	1.2	0.5	60	Al/Cu

Test curve :

Note :

You could choose Flange type

