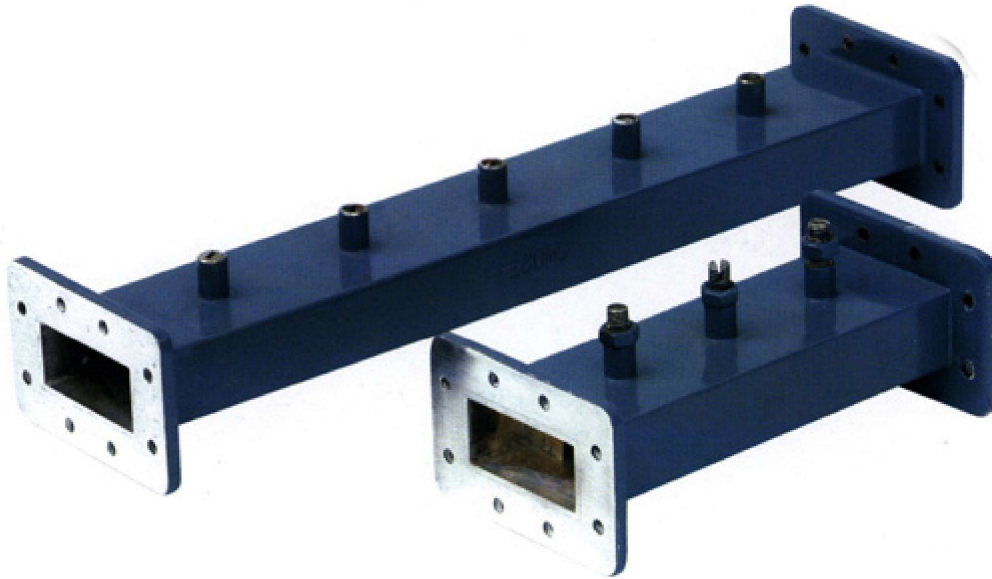
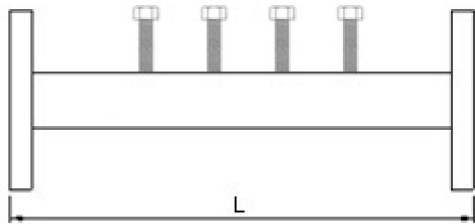


High Pass Waveguide Filter We offer HP series High Pass filters provides high rejection levels and :
for frequencies above the band edge or corner frequency. Feature : -low insertion loss -wide rejectio
Phased array radar, missile guidance, high-gain antenna and power synthesis system - Other Techn
Isolation (dB) 60 Insertion (dB) 0.3VSWR (dB) 1.2(Max) Mechanical Specifications : Material Al/Cu
Specifications Operating Temperature -55~+85

Types :



Outline Drawing :



Model List :

Waveguide			Frequency Range (GHz)	VSWR Max.	Insertion Loss(dB)	Isolation(dB)	Material
E.I.A.	IEC	UK					
WR229	WG11	R40	3.22-4.90	1.2	0.3	60	Al/Cu
WR187	WG12	R48	3.94-5.99	1.2	0.3	60	Al/Cu
WR159	WG13	R58	4.64-7.05	1.2	0.3	60	Al/Cu
WR137	WG14	R70	5.38-8.17	1.2	0.3	60	Al/Cu
WR112	WG15	R84	6.57-9.99	1.2	0.3	60	Al/Cu
WR90	WG16	R100	8.20-12.40	1.2	0.3	60	Al/Cu
WR75	WG17	R120	9.84-15.0	1.2	0.3	60	Al/Cu
WR62	WG18	R140	11.9-18.0	1.2	0.35	60	Al/Cu
WR51	WG19	R180	14.5-22.0	1.2	0.35	60	Al/Cu
WR42	WG20	R220	17.6-26.7	1.2	0.4	60	Al/Cu
WR34	WG21	R260	21.7-33.0	1.2	0.4	60	Al/Cu
WR28	WG22	R320	26.5-40.0	1.2	0.4	60	Al/Cu

Test curve :

Note :

You could choose Flange type



SatelliteDish.com ®

(954) 941-8883