

Type 5065 Series

Broadband Compact HF Dipole Antennas

- 2-30 MHz Frequency Range
- 1 kW average, 2 kW Peak Power Rating
- Horizontal Polarization
- 2.0:1 VSWR
- Short-to-Medium-Range Communications
- Compact Roof Mountable

General Description

The 5065 Series of antennas are designed for use in applications where space is at a premium. As a complement to the ASC Signal range of broadband dipole antennas (1765 and 3065), the 5065 Series is ideally suited to rooftop installation.

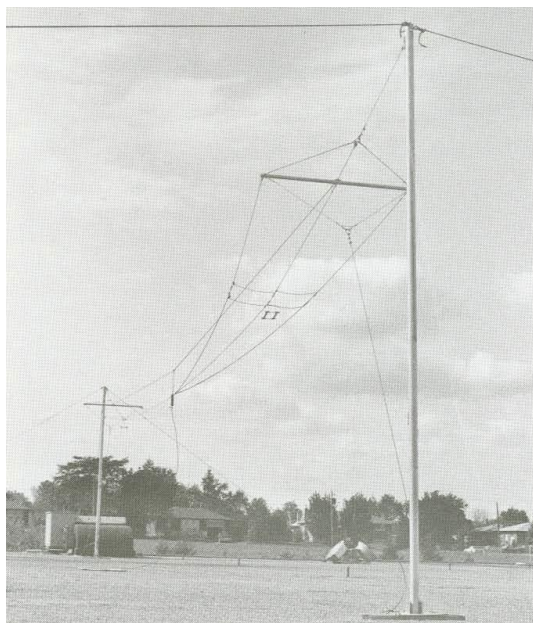
Designed for short to medium range communications, this antenna provides a uniform high angle omnidirectional radiation pattern.

Features

Simple construction and prefabricated assemblies reduce installation timescales and maintenance procedures making the 5065 Series ideal for sites where access is difficult.

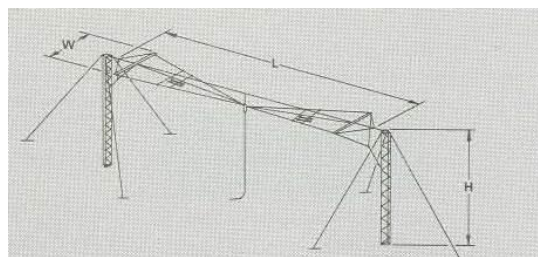
Characteristics

Type	Omnidirectional, horizontal dipole
Frequency Range, MHz	2-30
Power Rating, kW	1 average, 2 peak
VSWR (50 ohms)	2.0:1 nominal, 2.3:1 max
Gain, dBi	8.5 nominal
Antenna Efficiency % [32.8ft (10m) above perfect ground]	
2 MHz	7.32
5 MHz	34.36
10 MHz	50.89
20 MHz	51.93
30 MHz	84.13
Wind Survival Rating, mph (km/h)	
Without Ice	100 (160)
With 0.5 (12mm) Radial Ice	50 (80)

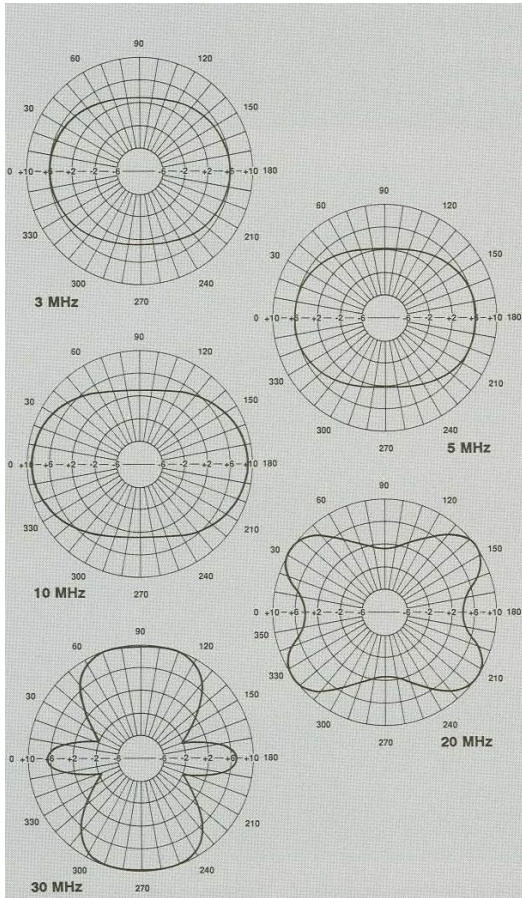


Manufactured from lightweight materials, the antenna consists of stainless steel radiators supported from a single paraflex catenary. This lightweight construction tower loading, thus reducing the size of the required support structures. Connection to the antenna is made by using a broadband matching unit,

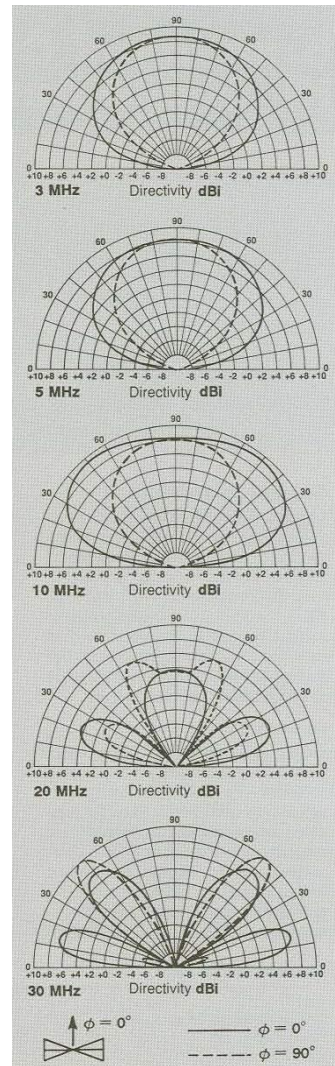
permitting the direct coupling of frequency agile equipment. Complete with all necessary accessories, installation of the 5065 Series may be accomplished by attaching the array to either existing or purposely designed support structures using suitable halyards.



Typical Azimuth Radiation Patterns at Beam Maximum
(Directive gain in dB Relative to Isotropic)



Typical Elevation Radiation Patterns



Ordering Information

Type Number*	Frequency Range MHz	Power Rating kW		Input Connector	Length (L) ft (m)	Dimensions Height (H) ft (m)	Width (W) ft (m)
		Average	Peak				
5065-100-2N	2-30	1	2	Type N Jack	144 (44)	32.8 (10)	4.5 (1.4)
5065-100-3N	2-30	0.15	0.3	Type N Jack	144 (44)	32.8 (10)	4.5 (1.4)
5065-101-2N	3-30	1	2	Type N Jack	97.7 (30)	32.8 (10)	6.5 (2)
5065-101-3N	3-30	0.15	0.3	Type N Jack	97.7 (30)	32.8 (10)	6.5 (2)
5065-100-2NKA	2-30	1	2	Type N Jack	144 (44)	32.8 (10)	4.5 (1.4)
5065-100-3NKA	2-30	0.15	3	Type N Jack	144 (44)	32.8 (10)	4.5 (1.4)
5065-101-2NKA	3-30	1	2	Type N Jack	97.7 (30)	32.8 (10)	6.5 (2)
5065-101-3NKA	3-30	0.15	0.3	Type N Jack	97.7 (30)	32.8 (10)	6.5 (2)

* The letter suffix "KA" denotes that the antenna is supplied with "knock-down" (unassembled) towers.