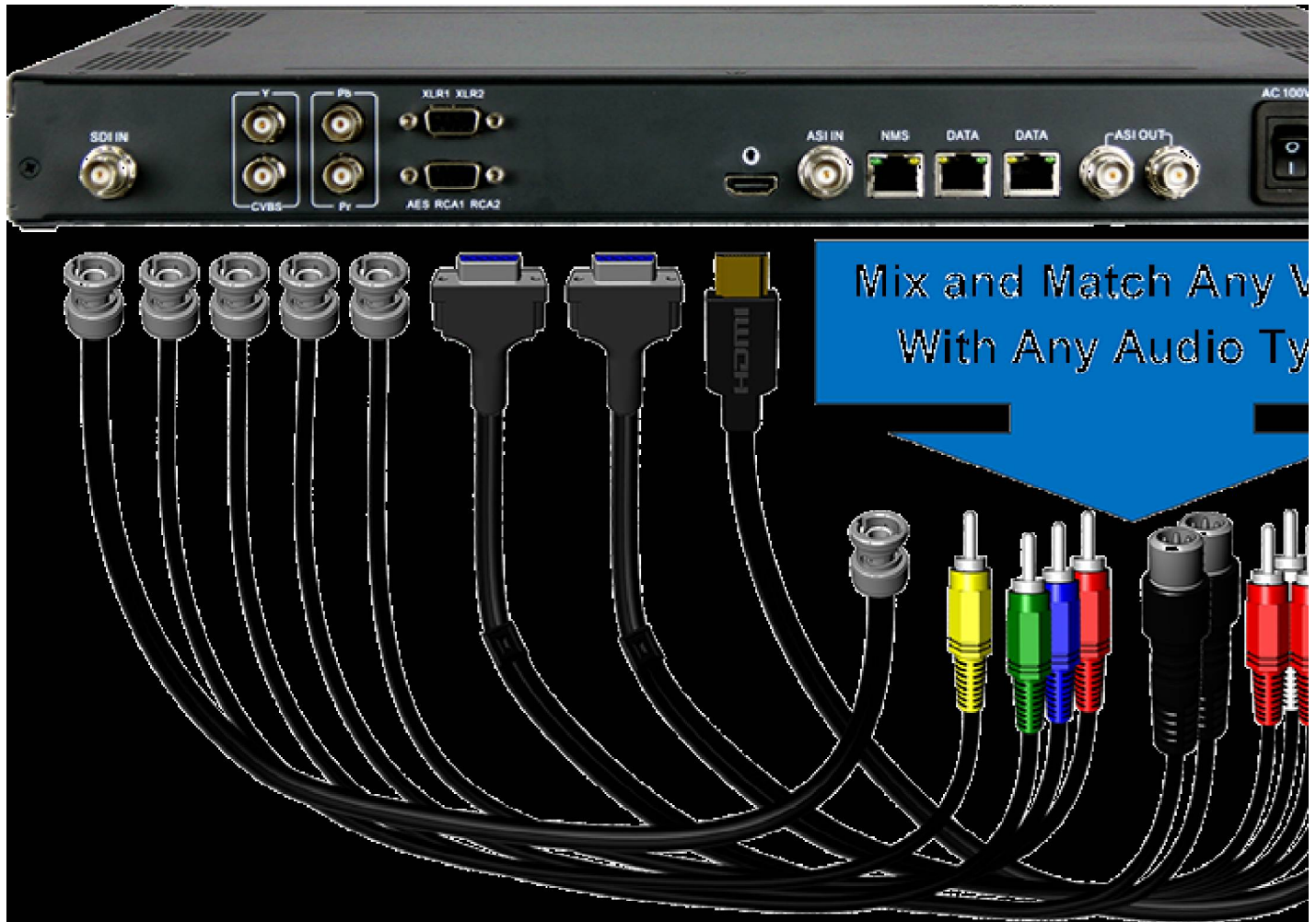


## Product Application



[DataSheet](#)



[SpecSheet](#)

### Product Specifications :

	1x HD-SDI or SD-SDI 1x HDMI with Audio
--	---

<b>Video</b>	Interface	1x CVBS Composite Analog 1x YPbPr Component Analog 1x DVB-ASI1x HD-SDI or SD-SDI		
	Resolution	<b>Input</b>	<b>Output</b>	<b>Interface A</b>
		1920x1080i@60	1920x1080, 1440x1080, 1280x1080i, 960x1080i	HDMI, SDI,
		1920x1080i @59.94		
		1920x1080i @50		
		1280x720p@60	1280x720, 960x720p, 640x720p	HDMI, SDI,
		1280x720p@59.94		
	1280x720p@50			
	720x576i@50	720x576, 704x576, 640x576, 544x576, 528x576, 480x576, 352x576	SDI, CVBS	
	720x480i@59.94	720x480, 704x480, 640x480, 544x480, 528x480, 352x480	SDI, CVBS	
	Encoding	MPEG-2 HD/SD; MPEG-4 AVC/H.264 HD/SD		
	Bitrate Range	0.52 – 60.00 Mbps		
Rate Control	CBR			
GOP Structure	Auto, IP, IPB, IPBB, IPBBB			
Aspect Ratio	4:3, 14:9 (for SD video), 16:9 (for HD video)			
Chroma	4:2:0, 4:2:2			
Advanced Pretreatment	De-interlacing, noise reduction, sharpening			
<b>Audio</b>	Interface	4xXLR, 4xRCA, 1xAES, 1xHDMI, 1xSDI (support maximum 4 ster synchronous processing or one DD 5.1 CH processing)		
	Encoding	MPEG-1 Layer II, HEAAC (v1&v2), LC-AAC, DD AC3 (2.0, 5.1 av		
		DD AC3 passthrough (for SDI in)		
	Sampling rate	48KHz		
	Resolution	24-bit		
Bit-rate	32Kbps~384Kbps			
<b>Low Delay options</b>		150ms, 200ms, 350ms, 650ms		
<b>Stream output</b>		2xASI output ports, BNC interface IP over UDP, 100 Base-T Ethernet interface UDP multicast/unicas		
<b>System function</b>		LCD/keyboard and web management NMS controll software upgrade viaEtherent		
<b>General</b>	Dimensions	485x405x45mm (W x D x H)		
	Weight	Approx 4.0Kg		
	Temperature	0~45?(Operation), -20~80?(Storage)		
	Power	AC110V±10%, 50/60Hz; AC 220V±10%,50/60Hz		
	Consumption	26W		

