



- Compact plate assemblies
- 3 LNAs must be added
- User-friendly M&C
- Auto-ranging redundant power supplies

## **Teledyne Paradise Datacom C-Band 1:2 Redundant LNA System**

At the heart of all Teledyne Paradise Datacom redundant LNA systems are the field-proven low noise amplifier product lines. Available in all common C-Band frequencies, and offering state-of-the-art noise temperature performance, these LNAs can be configured for use in 1:1, 1:2 and custom redundant systems. System monitoring and control is provided through the microprocessor-based RCP2-1100 and RCP2-1200 redundant system controllers. LNA plate assemblies are designed for convenient integration into any antenna hub or facility with RF and user interfaces readily accessible. Common feed interfaces are offered as standard and isolation is provided at all RF interfaces. A range of RF hardware options and custom plate configurations are offered to meet specific system requirements.

### **LNA Plate**

- Compact plate assemblies facilitate convenient antenna hub mounting
- Standard feed orientations
- State-of-the-art noise temperatures provided by Paradise Datacom LNAs
- All LNAs contain integral RF isolators

### **Control Panel**

- User-friendly M&C provided locally as well as through a standard serial I/O. (RS-232, 485 or optional Ethernet interfaces)
- Auto-ranging redundant power supplies: 85-264 VAC @ 47 to 63 Hz
- High system level reliability

### **Options**

- LNB Redundant Systems
- Transmit-band Reject Filter
- Off-line RF I/O
- Waveguide Test Inject Input Coupler
- Coaxial Output Coupler
- Custom LNA Plate Configurations
- -48 VDC Operation
- Remote Control Panels

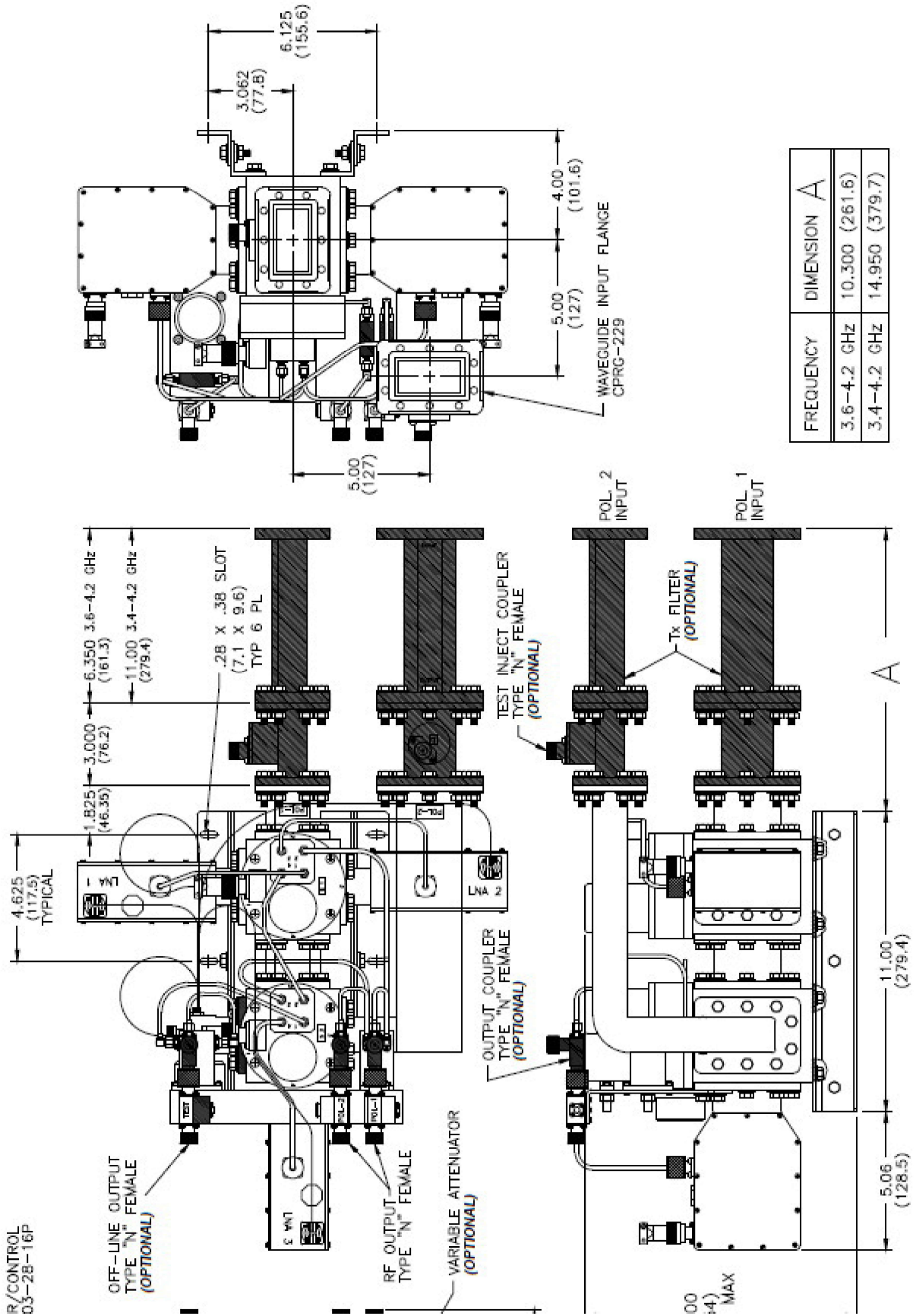
### **RCP2-1200 Front Panel Overview for use with 1:2 Redundant Systems**



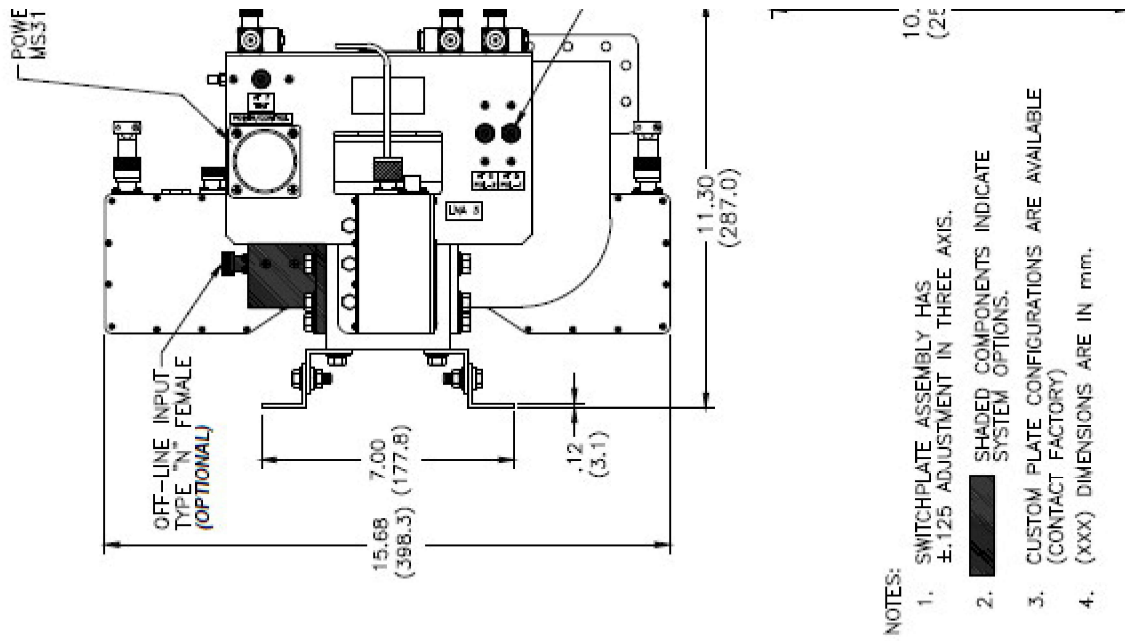
### RCP2-1100/1200 Rear Panel with Removable Power Supply Module



### Ku-Band 1:1 LNA Plate Outline



FREQUENCY	DIMENSION A
3.6-4.2 GHz	10.300 (261.6)
3.4-4.2 GHz	14.950 (379.7)



- [Teledyne Paradise Datacom C-Band Redundant LNA Systems](#)
- [Teledyne Paradise Datacom RF2 Series C-Band LNA 3.4 - 4.2 GHz](#)
- [Paradise RCP2/FPRC Redundant System Controllers](#)
- [Paradise RCP2/FPRC Redundant System Controller Operations Manual](#)
- [Paradise RCPD-1100-LX Redundant Control Panel for Dual 1:1 Systems](#)
- [Paradise RCPD-1100-LX Control Panel Operations Manual](#)
- [Paradise Datacom C-, X- and Ku-Band Redundant LNA Systems](#)