



% W Ext. Low Ku-Band Block Up Converter

KEY FEATURES

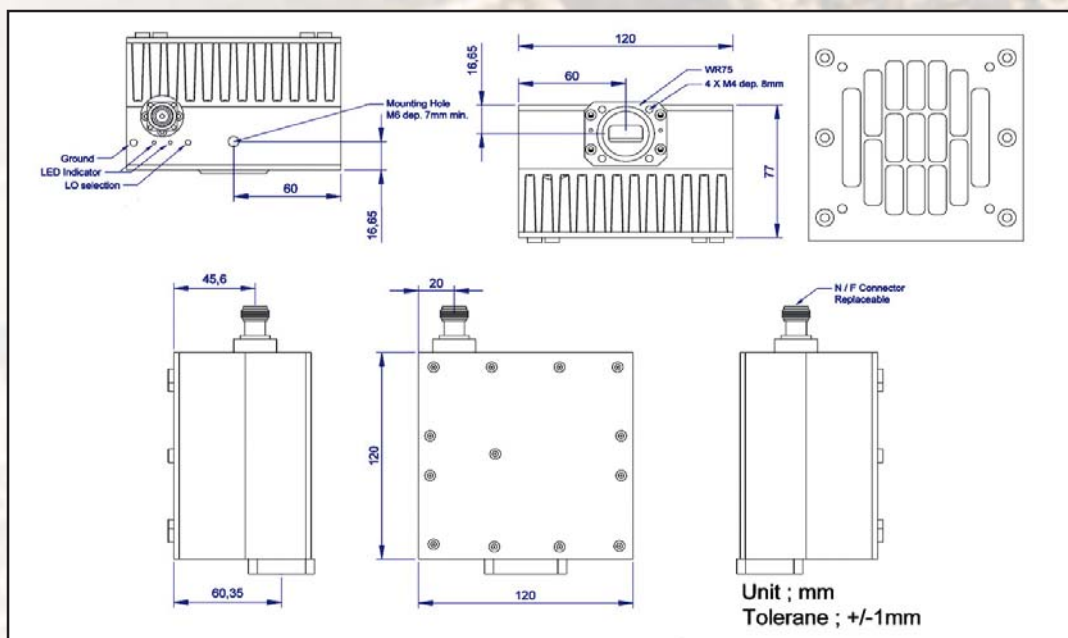
- ◆ Output frequency 12.75-13.50 GHz
- ◆ Smallest and lightest
- ◆ Double - L.O. (electronically and manually switchable (11.80 / 12.05 GHz)
- ◆ Auto-ranging 15-60 VDC
- ◆ Low power consumption (98W max)
- ◆ Digital temperature compensation
- ◆ L.O. lock and amplifier LEDs
- ◆ Field-exchangeable (F/N) IF connector
- ◆ M&C - combined RS-232/485/FSK (optional)
- ◆ Internal 10MHz high stability 10^{-8} reference (optional)
- ◆ Ethernet control (optional)
- ◆ Three-year warranty
- ◆ RoHS compliant

ABE% KXL / ABE% KXLF



This smallest and lightest 38W L-To Ku-Band Block Up Converter is designed to be mounted on a feed horn. The unit is ideal for portable and mobile applications. Double – L.O. feature makes unit universal for Ku-Band requirements. It is powered either with 24 or 48 VDC and consumes less than 94W.

Mechanical Drawing





% W Ext. Low Ku-Band Block Up Converter

TECHNICAL SPECIFICATIONS

RF frequency	13.00 to 13.50 GHz 12.75 to 13.50 GHz
Local oscillator- electronically and manually switchable	12.05 GHz and 11.80 GHz
IF frequency	950 to 1,700 MHz
Output power	16W (+42 dBm min) 8W (+39 dBm) P-Linear
IF connector	N-type or F-type (field-exchangeable)
Power supply- auto-ranging	+15~+60 VDC via IF cable, 92 W max
Internal 10MHz high stability reference	10 ⁻⁸
Output interface	WR-75 G
Gain variation over 40 MHz over 500 MHz Over operating temperature	± 0.5 dB over 40MHz ± 1.8 dB over full band ± 1.8 dB max.
Gain	64 dB min., 68 dB nominal
IMD3 (3dB back off Rated Power)	-26 dBc max
L.O. leakage	-45 dBm max
Spurious	-50 dBc max
Requirement for external reference frequency input power	via IF cable 10MHz (sine-wave) -5 to +5 dBm @ input port
Phase noise (Exceeds Intelsat's standard IESS308/309)	-53 dBc/Hz max. @ 10 Hz -63 dBc/Hz max. @ 100 Hz -73 dBc/Hz max. @ 1 KHz -83 dBc/Hz max. @ 10 KHz -93 dBc/Hz max. @ 100 KHz -113 dBc/Hz max @ 1 MHz
M&C	RS-232 and RS-485, Ethernet
FSK	Multiplexed on TX IFL, compatible with Comtech and Paradigm
Noise figure	20 dB max
Input V.S.W.R.	2 : 1 max
Output V.S.W.R.	2 : 1 max.
Mute	Shut off the BUC in case of L.O. unlocked
Status LED RED GREEN YELLOW YELLOW blinking	Summary alarm All OK All OK standard L.O. 12.05 GHz All OK extended L.O. 11.80 GHz
Temperature range (ambient) operating storage	-40 deg C to +55 deg C -55 deg C to +85 deg C
Dimensions & housing	120 (L) x 120 (W) x 77 (H) mm 4.72" (L) x 4.72" (W) x 3.03" (H)
Weight	1.8 kg (4.0 lbs) max