

# SPECIFICATIONS

**FREQUENCY BAND** : 3.400 - 4.800 GHz

**INSERTION LOSS** : 0.15 dB MAX

**VSWR** : 1.15:1 MAX

**CROSS POL** : 40 dB MIN

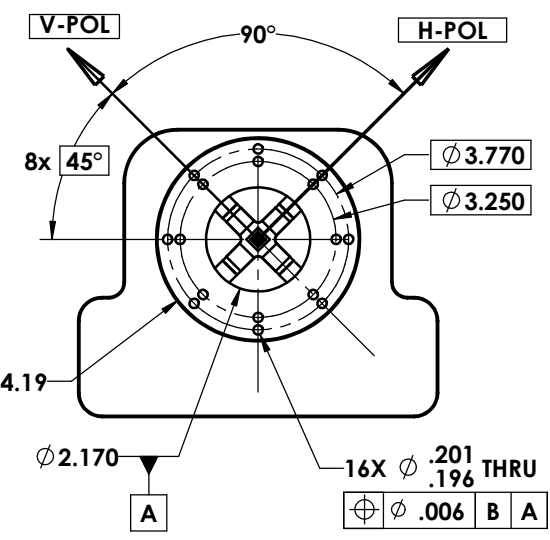
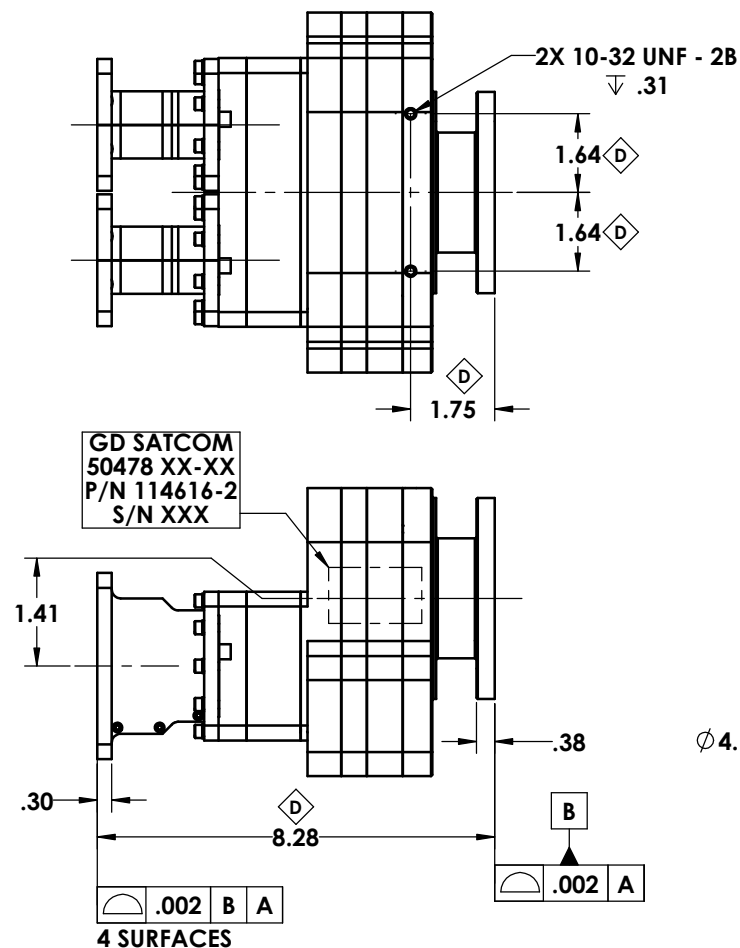
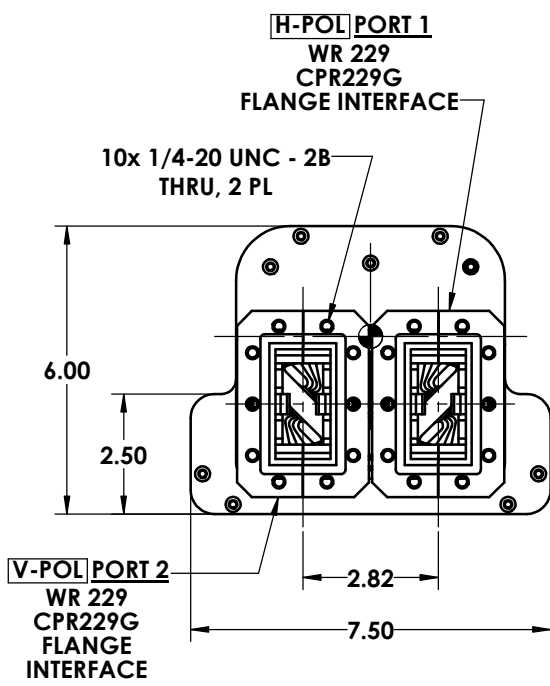
**PRESSURIZATION** : SEALED TO 2 PSIG

**FINISH**

FLANGE FACES : Zn-Ni PLATED PER AMS-2417G, TYPE II, CLASS 2  
 EXTERIOR : WHITE PAINT, COLOR No. 17875 PER FED-STD-595

## REVISIONS

ZONE	REV.	DESCRIPTION	DATE	APPROVED
	C	SEE EC No 12432	4/12/2013	
◇	D	SEE EC No 12757	12/3/2013	



NOTES: UNLESS OTHERWISE SPECIFIED.

UNLESS OTHERWISE SPECIFIED INTERPRET DIMENSIONING & TOLERANCING PER ANSI Y14.5M-1992. DIMENSIONS ARE IN INCHES. DIMENSIONS SHOWN IN ( ) ARE FOR REFERENCE ONLY. TOLERANCES ARE: SURFACE- TOLERANCES- .XX ±.03 .XXX ±.004 .XXXX ±.0020 ANGLES ±0°30' ✓ MATERIAL:	APPROVALS	DATE	GENERAL DYNAMICS PROPRIETARY <b>GENERAL DYNAMICS SATCOM Technologies</b> 3111 Fujita Street, Torrance CA 90505, (310) 539-6704			
	DRAWN: TOVALIN	10-20-11				
	CHECKED: H.Spieleeder	05-09-12	<b>C-BAND OMT Rx/Rx</b>			
	RF-ENG:					
	MFG-ENG:					
ENG MGR:			SIZE C	FSCM No 50478	DWG No 114616-2	REV D
EAR CONTROLLED: Export or re-export subject to 15 CFR 700 - 799			SCALE: 1:2	SHEET 1		