

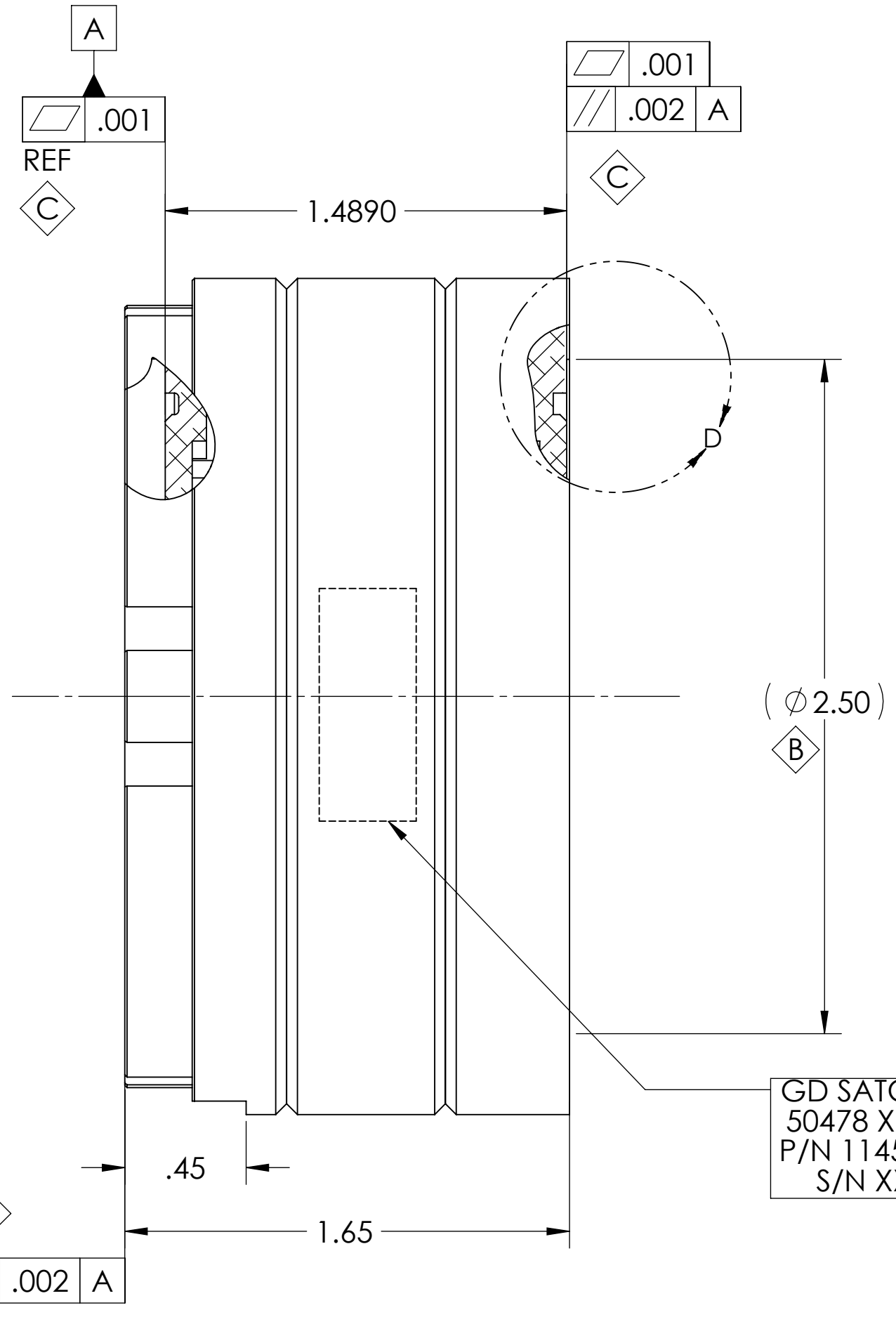
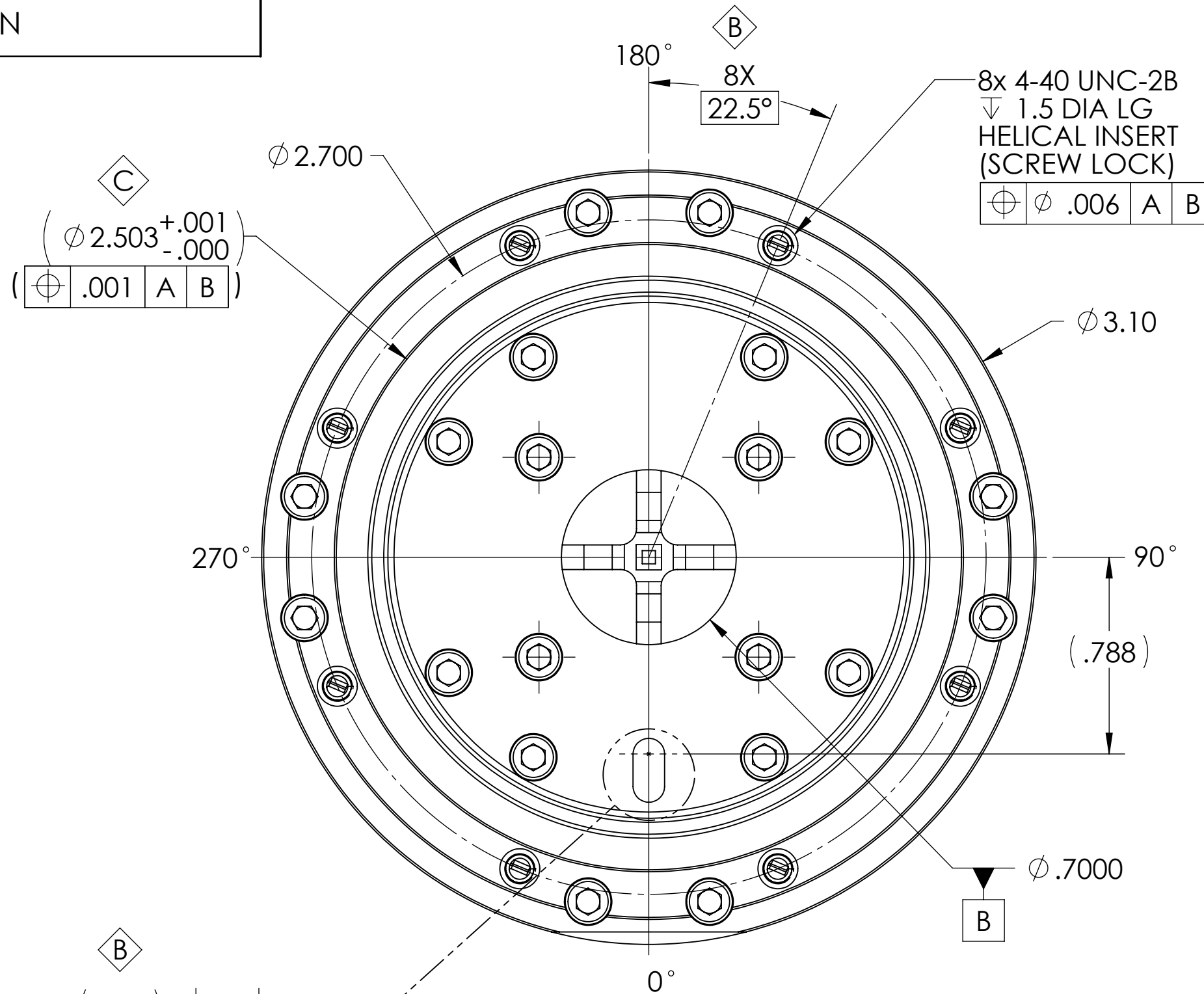
# SPECIFICATIONS

FRQUENCY BAND : 10.70 - 14.50 GHz  
 INSERTION LOSS : 0.25 dB MAX @ 10.70 - 10.95  
 0.15 dB MAX @ 10.95 - 14.50  
 VSWR : 1.3:1 @ 10.70 - 10.95 GHz  
 1.2:1 @ 10.95 - 14.50 GHz  
 PHASE SHIFT 180° NOMINAL  
 CROSSPOL : 40 dB MIN  
 PWR HANDLING : 3 KW CW MIN

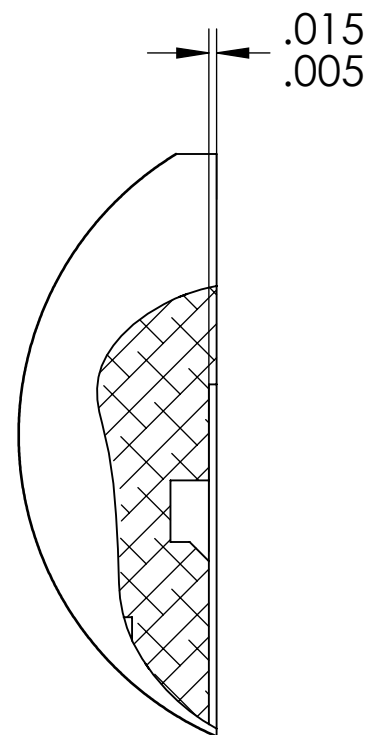
FINISH:  
 INTERIOR AND EXTERIOR : CHROMATE CONVERSION COATED  
 PER MIL-DTL-5541F, CLASS 1A TYPE II

REVISIONS			
REV.	DESCRIPTION	DATE	APPROVED
A	INITIAL RELEASE	10/31/2013	
B	UPDATED GD&T, SEE EC 12978	2/19/2014	
C	SEE CN13209	9/23/2014	N. HUFFMAN

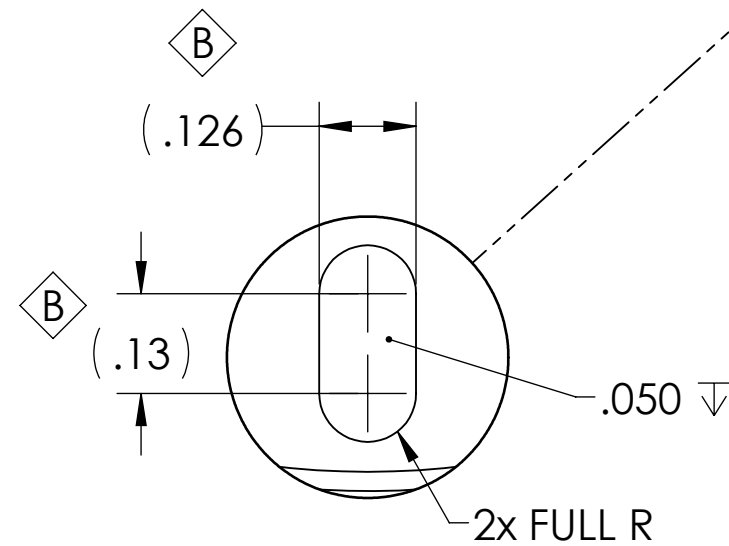
CCW ROTATION	INPUT	OUTPUT
0°	V	+V
0°	H	-H
45°	V	+H
45°	H	+V
90°	V	-V
90°	H	+H
135°	V	-H
135°	H	-V



GD SATCOM  
 50478 XX-XX  
 P/N 114538-4  
 S/N XXX



**DETAIL D**  
**SCALE 4 : 1**



**DETAIL A**  
**SCALE 4 : 1**

UNLESS OTHERWISE SPECIFIED		APPROVALS	DATE
INTERPRET DIMENSIONING & TOLERANCING PER ANSI Y14.5M-2009. DIMENSIONS ARE IN INCHES. DIMENSIONS SHOWN IN ( ) ARE FOR REFERENCE ONLY. TOLERANCES ARE:		DRAWN: TOVALIN	10-22-13
<b>SURFACE TOLERANCES</b>		CHECKED:	
32	.XX ±.01 ANGLES ±0°30'	RF ENG:	
	.XXX ±.002	ENGR:	
	.XXXX ±.0010	MFG:	
		QA:	
THIRD ANGLE PROJECTION		EAR CONTROLLED:	
MATERIAL:		Export or re-export subject to 15 CFR 700 - 799	
AL ALLOY 6061-T6			

GENERAL DYNAMICS PROPRIETARY			
<b>GENERAL DYNAMICS</b>			
<b>SATCOM Technologies</b>			
3111 Fujita Street, Torrance CA 90505, (310) 539-6704			
<b>180° PHASE SHIFTER, Ku-BAND</b>			
SIZE	FSCM No.	DWG No.	REV
C	50478	<b>114538-4</b>	C
SCALE:	1:1	WEIGHT:	SHEET 1 of 3

NOTES: UNLESS OTHERWISE SPECIFIED.