

SPECIFICATIONS

FREQUENCY BAND: 10.70 - 14.50 GHz

INSERTION LOSS : 0.25 dB MAX @ 10.70 - 10.95
0.15 dB MAX @ 10.95 - 14.50

VSWR : 1.3:1 @ 10.70 - 10.95 GHz
1.2:1 @ 10.95 - 14.50 GHz

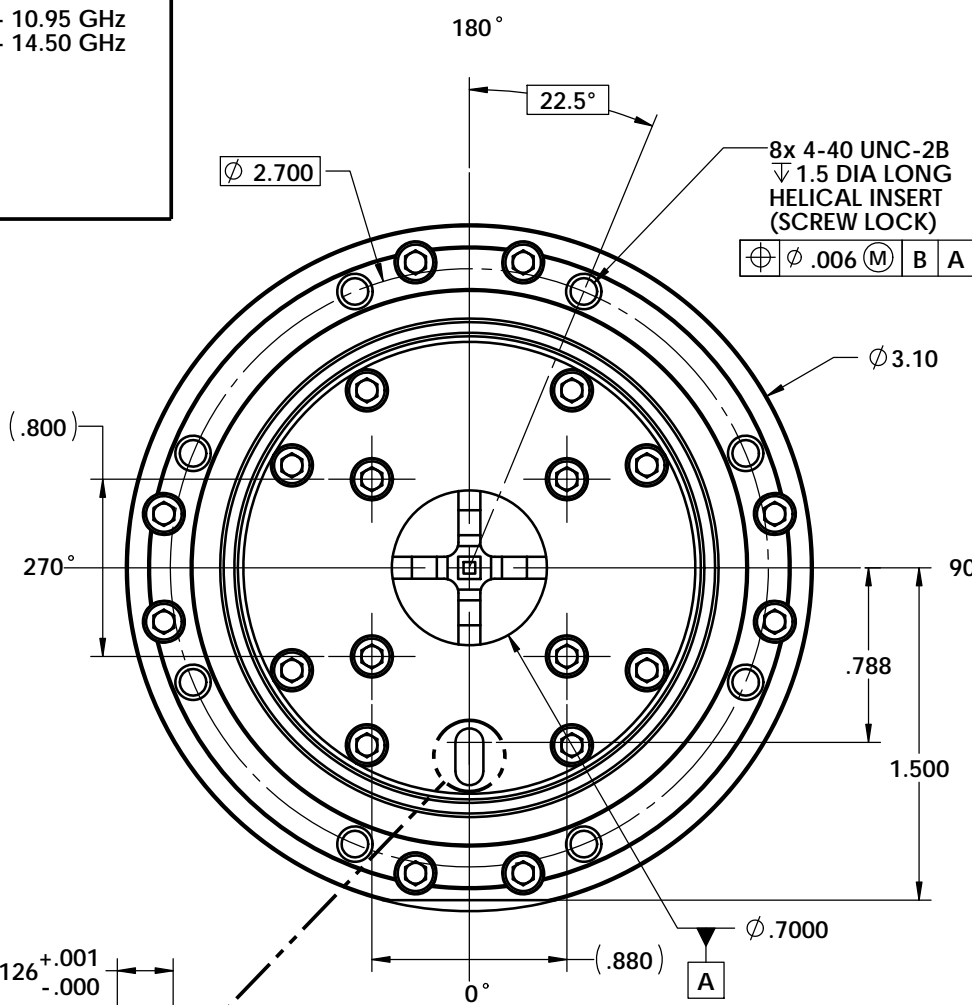
PHASE SHIFT : 180° NOMINAL

CROSSPOL : 40 dB MIN

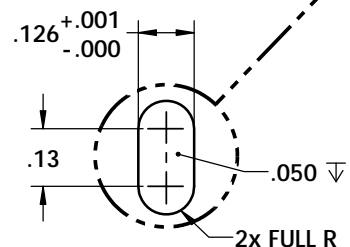
PWR HANDLING : 3 KW CW MIN

FINISH:
INTERIOR AND
EXTERIOR : CHROMATE CONVERSION COATED
PER MIL-DTL-5541F, CLASS 1A

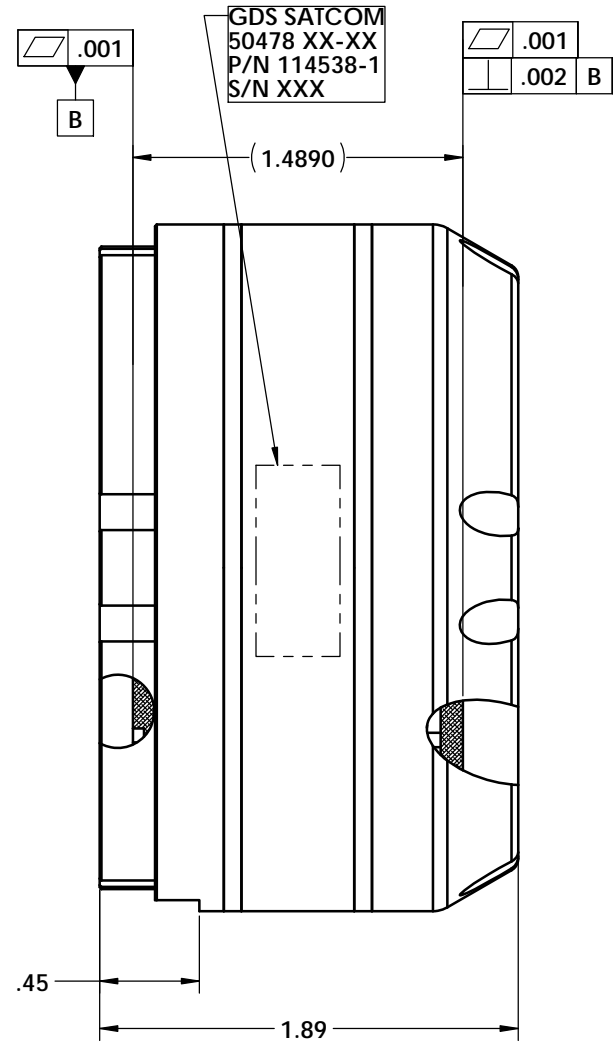
REVISIONS			
REV	DESCRIPTION	DATE	APPROVED
A	SEE DR# 11093		



CCW ROTATION	INPUT	OUTPUT
0°	V	+V
0°	H	-H
45°	V	+H
45°	H	+V
90°	V	-V
90°	H	+H
135°	V	-H
135°	H	-V



DETAIL G
SCALE 6 : 1.3



NOTES: UNLESS OTHERWISE SPECIFIED.

UNLESS OTHERWISE SPECIFIED INTERPRET DIMENSIONING & TOLERANCING PER ANSI Y14.5M-1992. DIMENSIONS ARE IN INCHES. DIMENSIONS SHOWN IN () ARE FOR REFERENCE ONLY. TOLERANCES ARE: SURFACE- TOLERANCES- XX ±.01 XXX ±.002 XXXX ±.0010 ANGLES ±0°30' ✓ MATERIAL: ALUMINUM ALY 6061-T6	APPROVALS	DATE	GENERAL DYNAMICS PROPRIETARY GENERAL DYNAMICS SATCOM Technologies 3111 Fujita Street, Torrance CA 90505, (310) 539-6704 Ku-BAND 180° PHASE SHIFTER ASSEMBLY				
	DRAWN: TOVALIN	02-14-11					
	CHECKED: H. Spieleder	07-06-11					
	ENGR:						
	MFG:						
QA:			EAR CONTROLLED: Export or re-export subject to 15 CFR 700 - 799	SIZE C	FSCM No. 50478	DWG No. 114538-1	REV A
SCALE: See Sheet		SHEET 1					