

FREQUENCY BAND Rx: 8.100 - 8.350 GHz
Tx: 7.208 - 7.225 GHz

INSERTION LOSS Rx: 0.25 dB MAX
Tx: 0.35 dB MAX

VSWR : 1.25:1 MAX (ALL PORTS)

ISOLATION Rx: 120 dB MIN AT 7.208 - 7.225 GHz
Tx: 110 dB MIN AT 8.100 - 8.350 GHz

POWER HANDLING Tx: 1.0 kW CW MIN

TEMPERATURE
OPERATING: -20 °F to +120 °F
SURVIVAL: -30 °F to +130 °F

HUMIDITY : ANY RELATIVE HUMIDITY UP TO 100%
INCLUDING CONDENSATION CAUSED BY
TEMPERATURE CHANGES

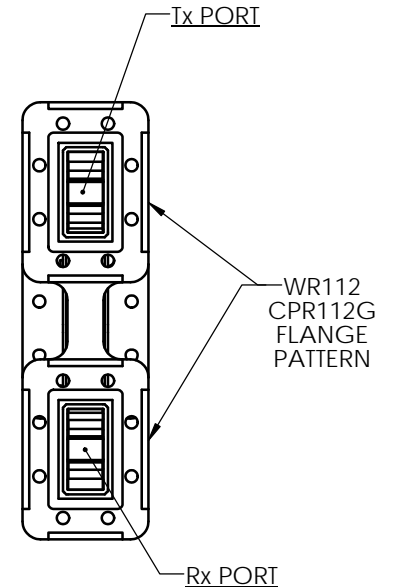
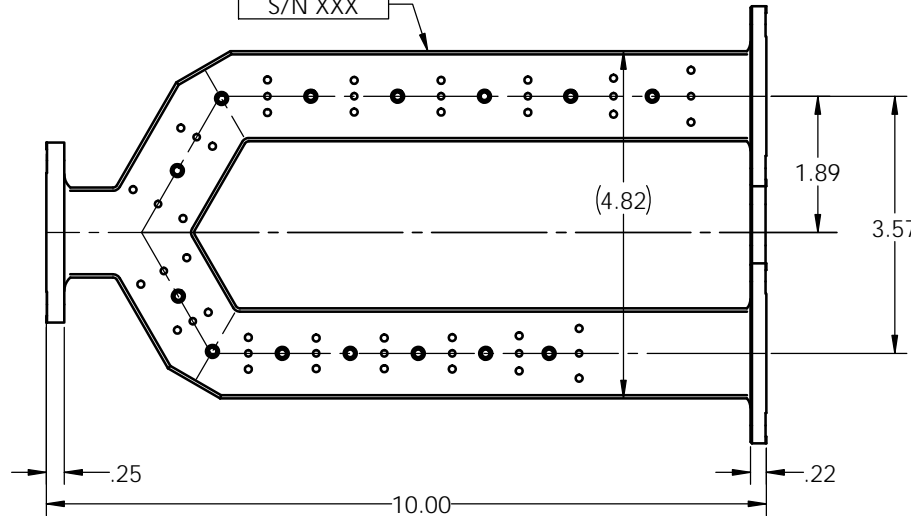
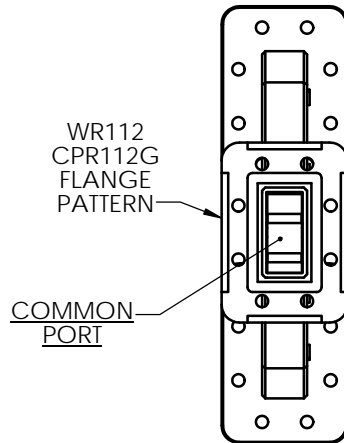
PRESSURIZATION: SEALED TO 1.0 PSIG

FINISH
FLANGE FACES: ZINC-NICKEL PLATED PER AMS 2417G,
TYPE II, CLASS 2
EXTERIOR: WHITE PAINT, COLOR NQ 17875, PER
FED-STD-595

REVISIONS			
REV	DESCRIPTION	DATE	APPROVED
C	SEE DR NQ 11600		



GD-SATCOM
50478 XX-XX
P/N 114495-1
S/N XXX



UNLESS OTHERWISE SPECIFIED

INTERPRET DIMENSIONING &
TOLERANCING PER ANSI
Y14.5M-1992. DIMENSIONS ARE
IN INCHES. DIMENSIONS SHOWN
IN () ARE FOR REFERENCE
ONLY. TOLERANCES ARE:
SURFACE- TOLERANCES-
XX ±.01
XXX ±.002
XXXX ±.0010
ANGLES ±0°30'

MATERIAL:

APPROVALS DATE

DRAWN: C. Reitz 11-10-11

CHECKED:

ENGR:

MFG:

QA:

EAR CONTROLLED:

Export or re-export
subject to 15 CFR
700 - 799

GENERAL DYNAMICS PROPRIETARY

GENERAL DYNAMICS
SATCOM Technologies
3111 Fujita Street, Torrance CA 90505, (310) 539-6704

X-BAND WR112 DIPLEXER
"CONVENTIONAL"

SIZE	FSCM No.	DWG No.	REV
C	50478	114495-1	C
SCALE:	3:4	SHEET	1

NOTES: UNLESS OTHERWISE SPECIFIED.