

SPECIFICATIONS

FREQUENCY BAND Rx: 21.45 - 21.95 GHz
Tx: 24.70 - 25.20 GHz

INSERTION LOSS : 0.15 dB MAX

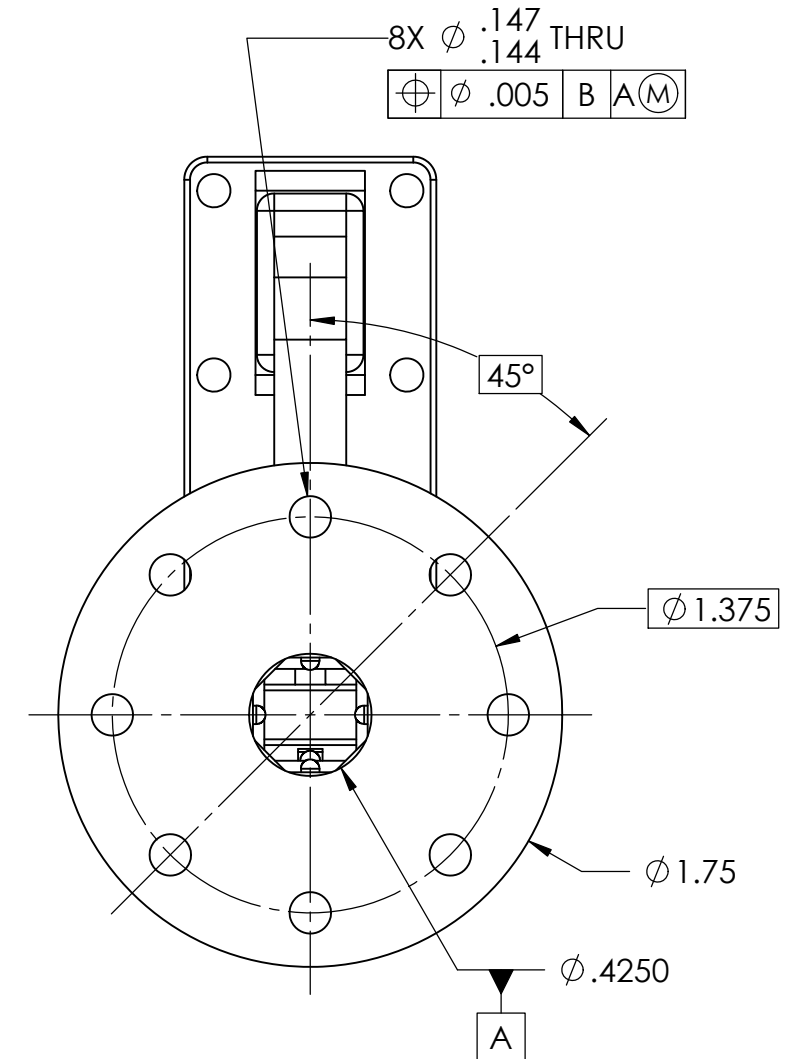
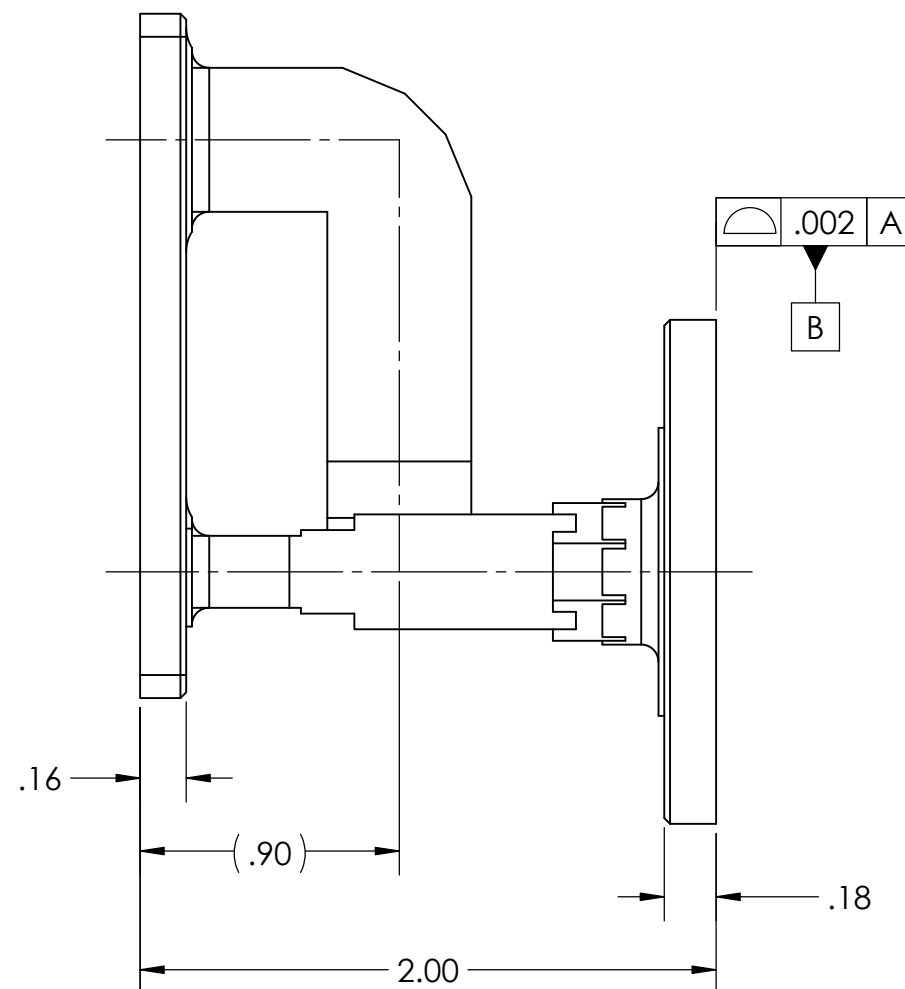
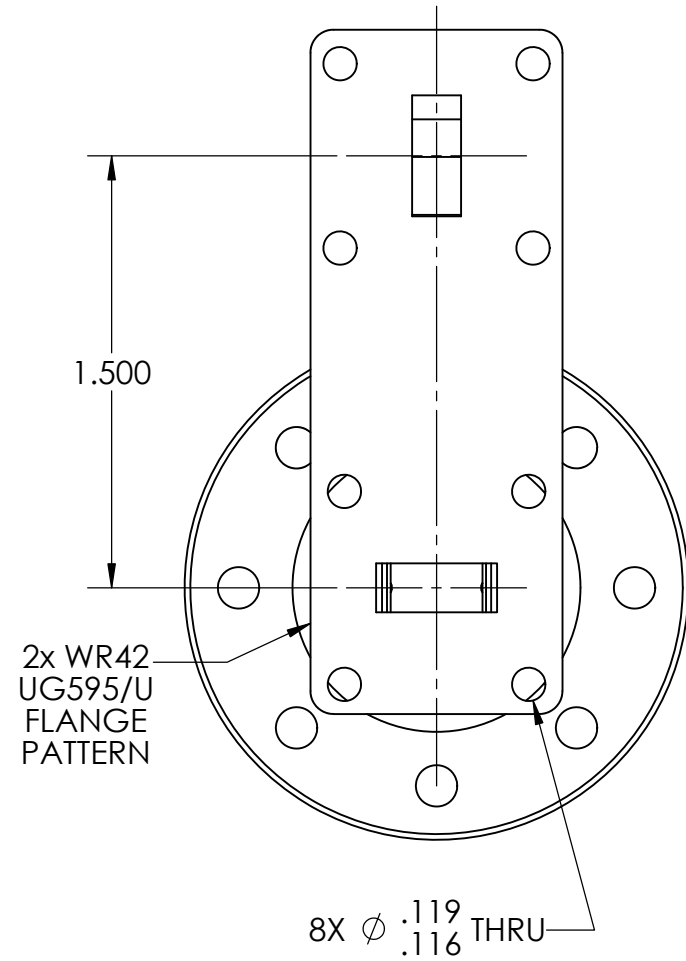
VSWR : 1.15:1

CROSS-POL : 35 dB MIN

FINISH
FLANGE FACES : ZINC-NICKEL PLATED
(PER AMS 2417G, TYPE II, CLASS 2)
EXTERIOR : NONE

REVISIONS

ZONE	REV.	DESCRIPTION	DATE	APPROVED
	A	INITIAL RELEASE	3/19/2014	



NOTES: UNLESS OTHERWISE SPECIFIED.

DO NOT SCALE DRAWINGS		APPROVALS	DATE	GENERAL DYNAMICS PROPRIETARY	
<small>UNLESS OTHERWISE SPECIFIED, INTERPRET DIMENSIONING & TOLERANCING PER ANSI/ASME Y14.5M-2009. DIMENSIONS ARE IN INCHES. DIMENSIONS SHOWN IN () ARE FOR REFERENCE ONLY.</small> TOLERANCES: TWO PLACE DECIMAL \pm .01 THREE PLACE DECIMAL \pm .002 FOUR PLACE DECIMAL \pm .0010 ANGLES \pm 0°30'		DRAWN: H. Lim	03-18-14	GENERAL DYNAMICS SATCOM Technologies 3111 Fujita Street, Torrance CA 90505, (310) 539-6704 TITLE: <h2>OMT, K-BAND</h2>	
		CHECKED:			
		RF DESIGN: J. Kerpan	03-17-14		
		MFG:			
<small>THIRD ANGLE PROJECTION</small> 		<small>EAR CONTROLLED</small> Export or re-export subject to 15 CFR 700 - 799	MATERIAL EF-COPPER ALLOY	SIZE B	CAGE CODE 50478
				DWG No 114405-3	REV A
				SCALE: 3:2	WEIGHT: 0.289 LB SHEET 1 of 3