

SPECIFICATIONS

FREQUENCY BAND

Rx1/Rx2: 10.70 - 12.75 GHz
 Tx1/Tx2: 13.00 - 14.50 GHz
 Tx3/Tx4: 17.30 - 18.40 GHz

INSERTION LOSS

Rx1/Rx2: 0.80 dB MAX
 Tx1/Tx2: 0.80 dB MAX
 Tx3/Tx4: 0.35 dB MAX

VSWR

Rx: 1.35:1 MAX
 Tx: 1.35:1 MAX

ISOLATION

Tx/Rx: 100 dB MIN
 Rx/Tx: 85 dB MIN
 Rx/Rx: 40 dB MIN
 Tx/Tx: 40 dB MIN

CROSS-POL

: 40 dB MIN

POWER HANDLING

Tx1/Tx2: 1.0 kW CW TOTAL
 Tx3: 2.0 kW CW TOTAL
 Tx4: 2.0 kW CW TOTAL

PIM LEVEL AND VERIFICATION

: -116 dBm MAX WITH TWO CARRIERS AT 25 W CW OVER 13.00 - 18.40 GHz

PRESSURIZATION

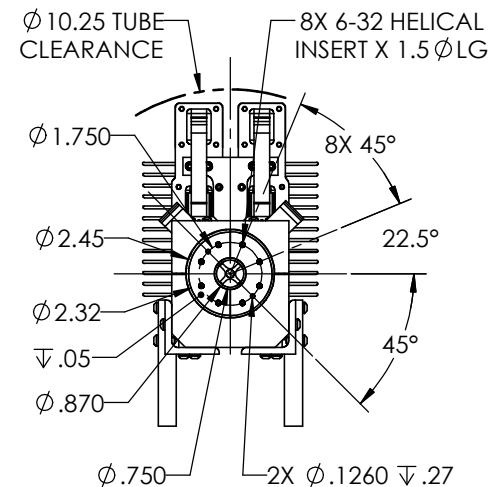
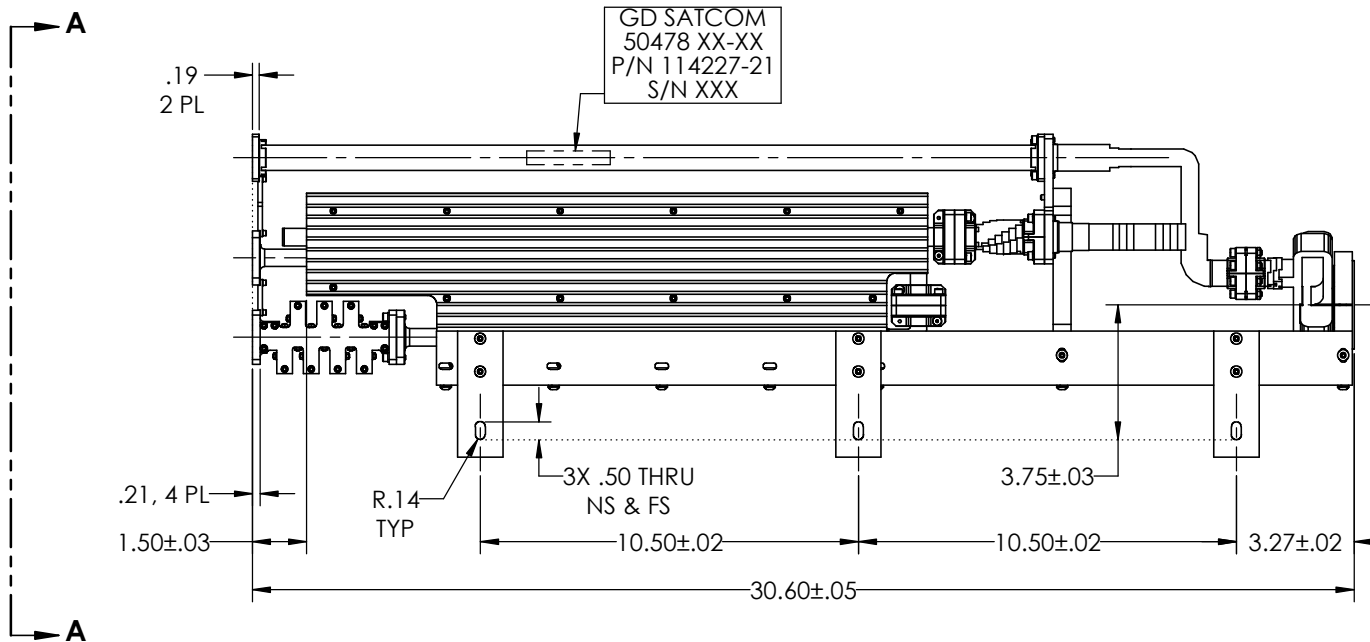
: SEALED TO 5.0 PSIG

FINISH

FLANGE FACES : COPPER ALLOY
 EXTERIOR : BLACK PAINT, COLOR № 37038 PER FED-STD-595

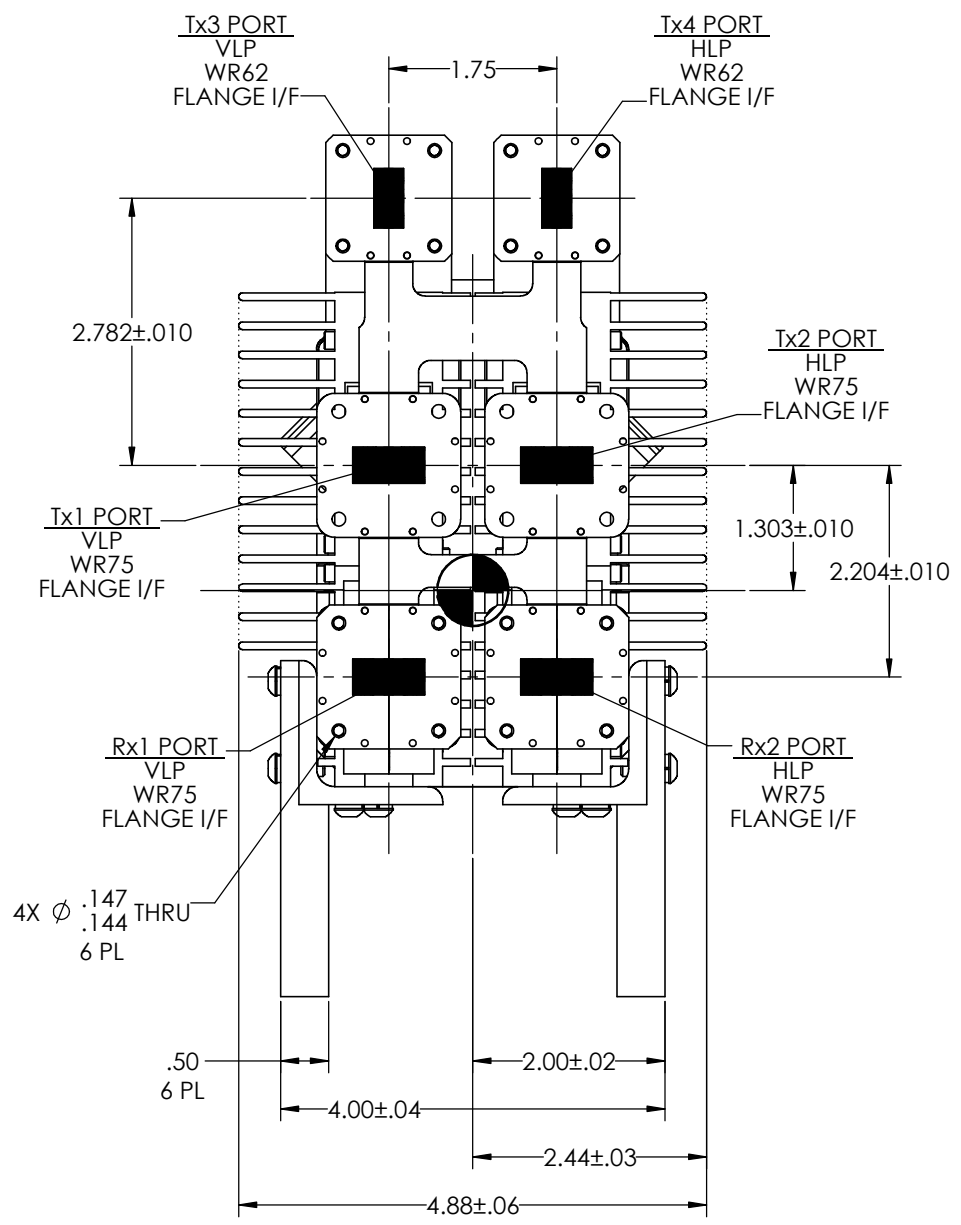
REVISIONS

ZONE	REV.	DESCRIPTION	DATE	APPROVED
	A	INITIAL RELEASE CN № 13452	2015-09-23	J. Mitchell



NOTES: UNLESS OTHERWISE SPECIFIED.

DO NOT SCALE DRAWINGS		APPROVALS	DATE	GENERAL DYNAMICS PROPRIETARY	
UNLESS OTHERWISE SPECIFIED, INTERPRET DIMENSIONING & TOLERANCING PER ANSI/ASME Y14.5M-2009. DIMENSIONS ARE IN INCHES. DIMENSIONS SHOWN IN [] ARE FOR REFERENCE ONLY.		DRAWN: H. Lim	09-23-2015	GENERAL DYNAMICS SATCOM Technologies 3111 Fujita Street, Torrance CA 90505, (310) 539-6704	
TOLERANCES: TWO PLACE DECIMAL ±.01 THREE PLACE DECIMAL ±.002 FOUR PLACE DECIMAL ±.0010 ANGLES ± 0°30'		CHECKED: see CN	see CN		
SURFACE FINISH: 32 √ OR BETTER		RF DESIGN: see CN	see CN	TITLE: 6-PORT LP, Ku-BAND LowPIM ASM	
THIRD ANGLE PROJECTION		MFG: see CN	see CN		
EAR CONTROLLED:		ISS: see CN	see CN	SIZE: C	CAGE CODE: 50478
Export or re-export subject to 15 CFR 700 - 799		PROJECT:	PROJECT:	DWG №: 114227-21	REV: A
				SCALE: 3:8	WEIGHT: 29.878 LB



VIEW A-A

GENERAL DYNAMICS
 SATCOM Technologies
 3111 Fujita Street, Torrance CA 90505, (310) 539-6704

SIZE	CAGE CODE	DWG No	REV
C	50478	114227-21	A
SCALE: 1:1	WEIGHT: 29.878 LB	SHEET 2	