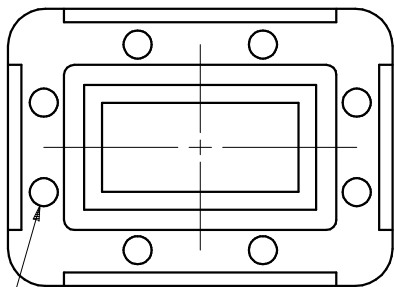


# SPECIFICATIONS

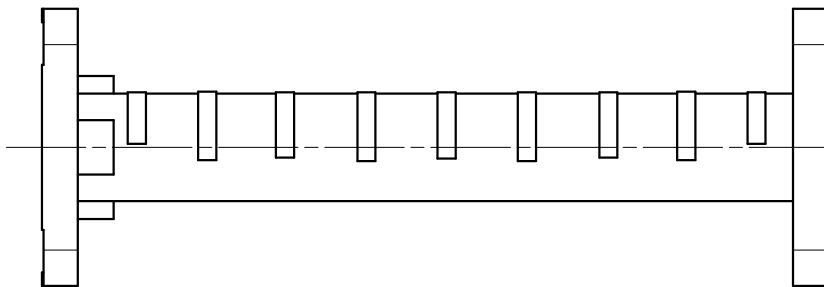
FREQUENCY BAND : 5.850-6.425 GHz  
 INSERTION LOSS : 0.15 dB MAX  
 VSWR : 1.20:1 MAX  
 ISOLATION : 70 dB MIN @ 7.400 - 8.590 GHz

## REVISIONS

REV	DESCRIPTION	DATE	APPROVED
A	SEE CN 13405	05-06-15	J. MITCHELL



(8x  $\phi$  .196 THRU)  
 $\phi$  .002 A B

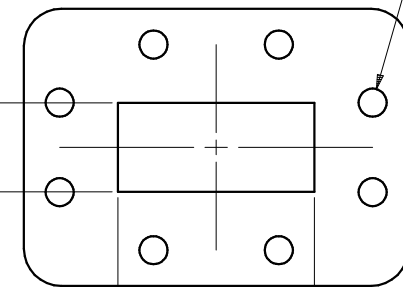


5.50

$\nabla$  .002  
 $\perp$  .002 A-B

$\nabla$  .002  
 $\perp$  .002 A-B

(8x  $\phi$  .196 THRU)  
 $\phi$  .002 A B



(0.622)  
 -B-

(1.372)  
 -A-

NOTES: UNLESS OTHERWISE SPECIFIED.

UNLESS OTHERWISE SPECIFIED		APPROVALS	DATE	GENERAL DYNAMICS PROPRIETARY	
DIMENSIONS & TOLERANCES ARE IN INCHES		DRAWN: H. Lim	10-31-07	<b>GENERAL DYNAMICS</b> SATCOM Technologies 3111 Fujita St., Torrance, CA 90505, (310) 539-6704	
SURFACE TOLERANCES-		CHECKED: B. Terry	10-31-07		
.XX ±.01 .XXX ±.002 .XXXX ±.0010 ANGLES ±0°30'		RF ENGR: B. Terry	10-31-07		
MATERIAL:		ENGR:			
NEXT ASSY:		EAR CONTROLLED: EXPORT OR RE-EXPORT SUBJECT TO 15 CFR 700-799		<b>C-BAND LowPASS FILTER</b>	
SIZE	FSCM No.	DWG No.	REV		
C	50478	114079-1	A		
SCALE: 3:2			SHEET 1		