

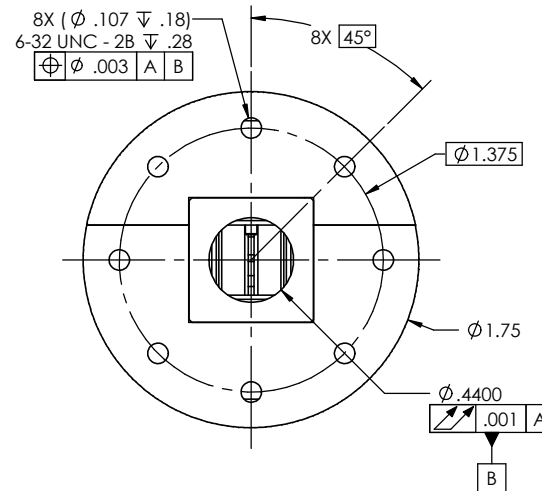
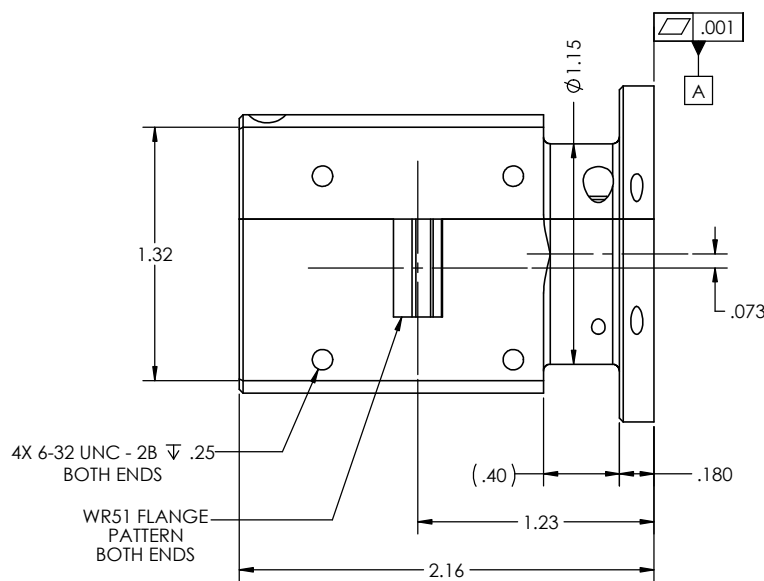
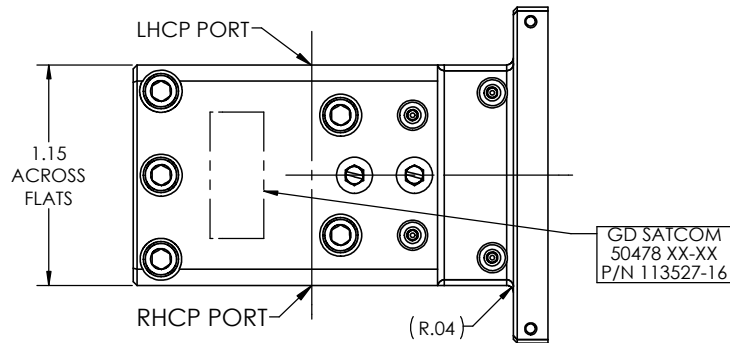
SPECIFICATION (B)

FREQUENCY BAND : 17.70 - 21.20 GHz
 INSERTION LOSS : 0.10 dB MAX
 VSWR : 1.15:1
 ISOLATION : 22 dB MIN (TO MATCHED LOAD)
 AXIAL RATIO : 0.50 dB MAX (TO MATCHED LOAD)

PRESSURIZATION : SEALED TO 5.0 PSIG
 FINISH
 FLANGE FACES : CHROMATE CONVERSION COATED PER MIL-DTL-5541F, TYPE II, CLASS 1A
 EXTERIOR: WHITE PAINT, COLOR No 17875
 PER FED-STD-595

REVISIONS

REV.	DESCRIPTION	DATE	APPROVED
-	INITIAL RELEASE	28JUN13	
A	REVISED PER EC 12618	7/10/2013	
B	REVISED PER EC 12636	19JUL13	A.J.
C	SEE CN № 12643	2014/11/17	



UNLESS OTHERWISE SPECIFIED INTERPRET DIMENSIONING & TOLERANCING PER ANSI Y14.5M-1992. DIMENSIONS ARE IN INCHES. DIMENSIONS SHOWN IN () ARE FOR REFERENCE ONLY. TOLERANCES ARE: SURFACE- TOLERANCES- .XX ±.01 .XXX ±.002 .XXXX ±.0010 ANGLES ±0°30' 32 ✓ MATERIAL:	APPROVALS DRAWN: A. BACA CHECKED: ENGR: MFG: QA:	DATE 28JUN13	GENERAL DYNAMICS PROPRIETARY GENERAL DYNAMICS SATCOM Technologies 3111 Fujita Street, Torrance CA 90505, (310) 539-6704		
	EAR CONTROLLED: Export or re-export subject to 15 CFR 700 - 799		K-BAND HYBRID POLARIZER		
	SIZE C	FSCM No. 50478	DWG No. 113527-16	REV C	
	SCALE: 2:1		SHEET 1 of 2		

NOTES: UNLESS OTHERWISE SPECIFIED.