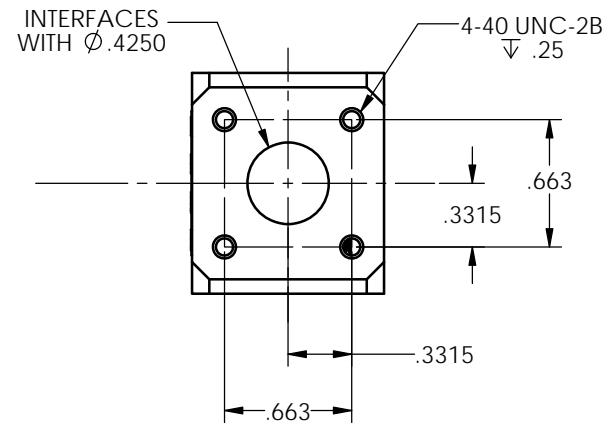
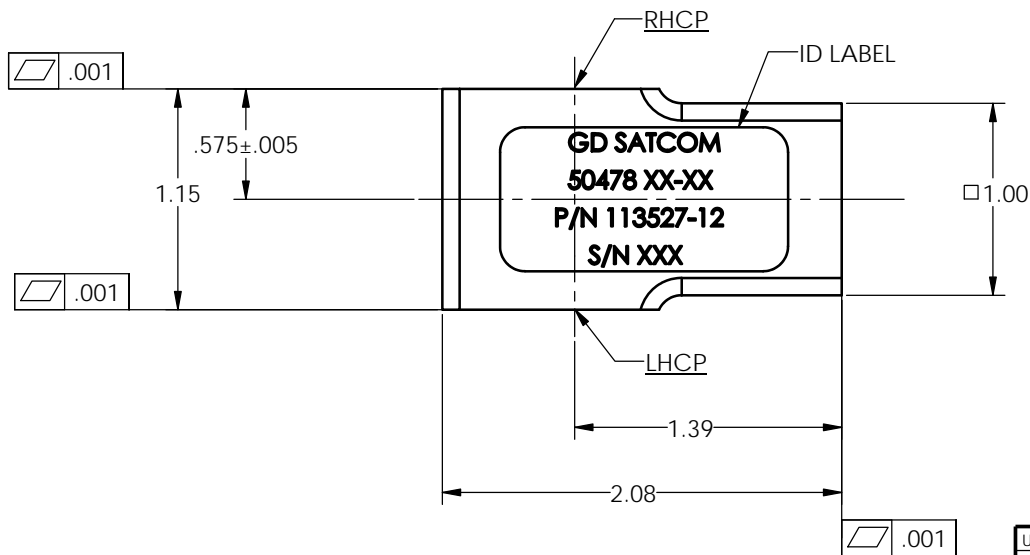
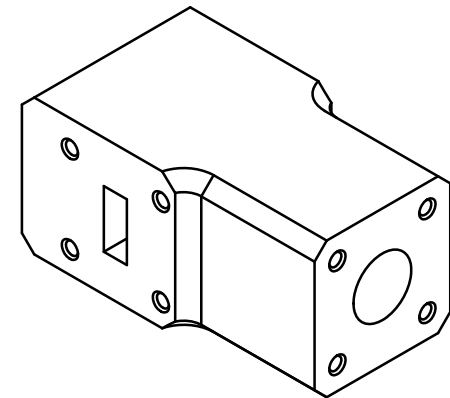
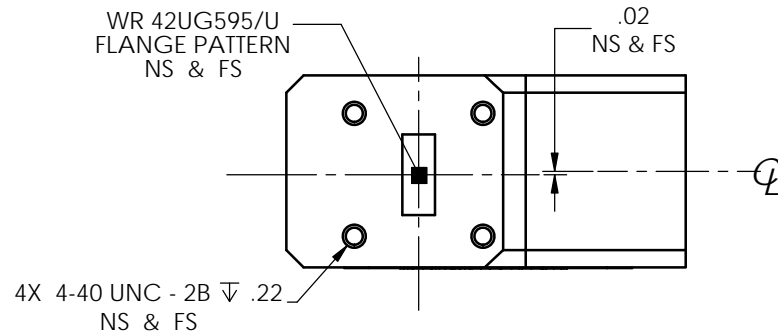


SPECIFICATIONS

FREQUENCY BAND : 17.20 - 20.20 GHz
INSERTION LOSS : 0.15 dB MAX
VSWR : 1.15:1 MAX
ISOLATION : 20.0 dB MIN (INTO MATCHED LOAD)
AXIAL RATIO : 0.60 dB MAX (INTO MATCHED LOAD)

PRESSURIZATION : TESTED TO 5.0 PSIG
FINISH
 FLANGE FACES: CHROMATE CONVERSION COATED
 EXTERIOR: WHITE PAINT, COLOR No. 17875 PER FED-STD-595

REVISIONS			
REV.	DESCRIPTION	DATE	APPROVED
-	INITIAL RELEASE		



UNLESS OTHERWISE SPECIFIED INTERPRET DIMENSIONING & TOLERANCING PER ANSI Y14.5M-1992. DIMENSIONS ARE IN INCHES. DIMENSIONS SHOWN IN () ARE FOR REFERENCE ONLY. TOLERANCES ARE: SURFACE- TOLERANCES- XX ±.01 XXX ±.002 XXXX ±.0010 ANGLES ±0°30' ✓ MATERIAL:	APPROVALS	DATE	GENERAL DYNAMICS PROPRIETARY			
	DRAWN: TOVALIN	02-16-13	GENERAL DYNAMICS SATCOM Technologies			
	CHECKED:		3111 Fujita Street, Torrance CA 90505, (310) 539-6704			
	ENGR:		HYBRID POLARIZER, K-BAND			
	MFG:		SIZE C	FSCM No. 50478	DWG No. 113527-12	REV -
	QA:		SCALE: 2:1			SHEET 1 of 2
	EAR CONTROLLED: Export or re-export subject to 15 CFR 700 - 799					

NOTES: UNLESS OTHERWISE SPECIFIED.