

SPECIFICATIONS

FREQUENCY BAND : 7.27 - 7.75 GHz

INSERTION LOSS : 3.1 ± 0.15 dB MAX

VSWR : 1.15:1 MAX

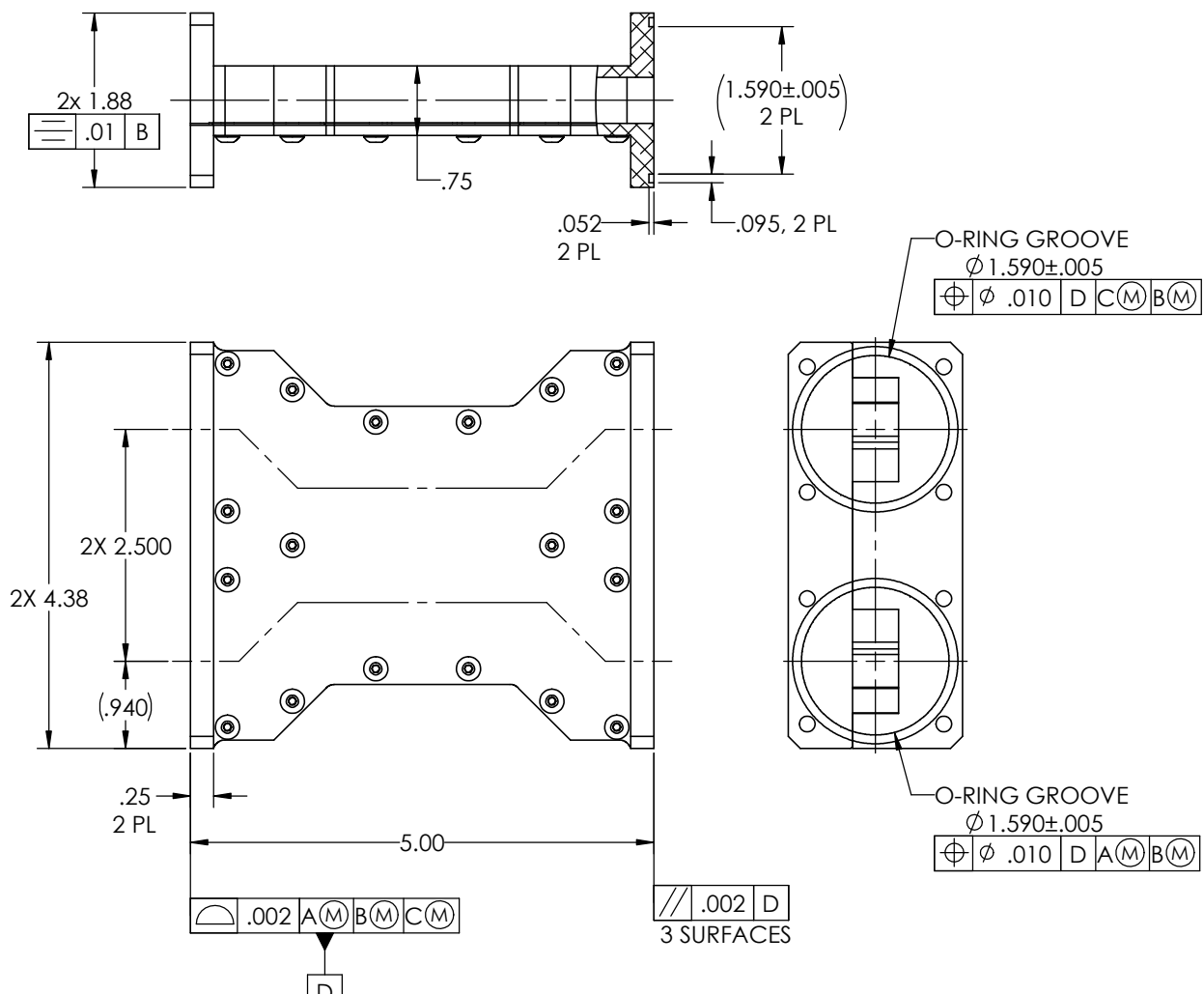
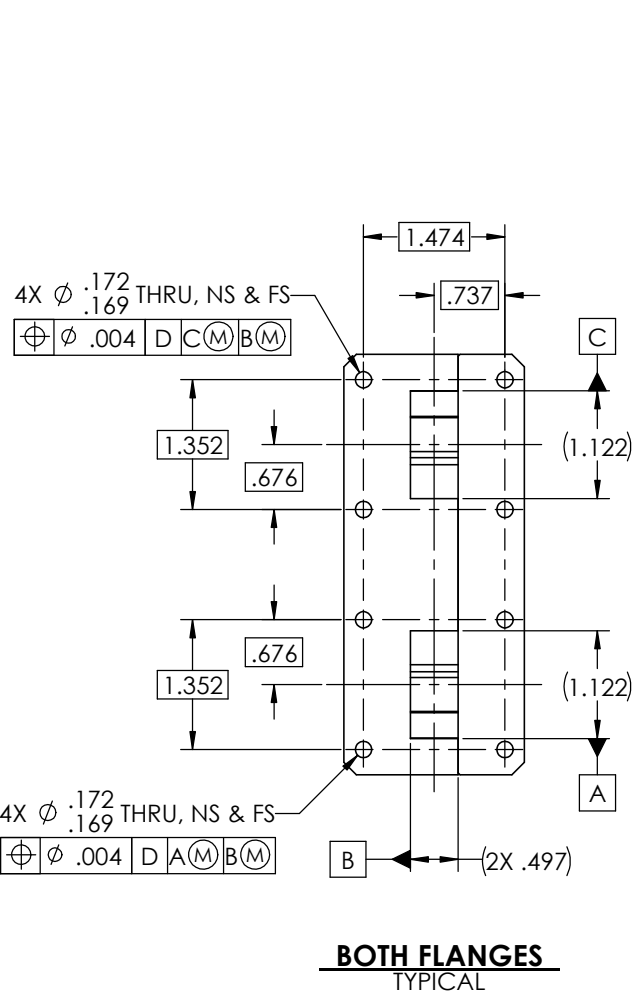
PRESSURIZATION : SEALED TO 5.0 PSIG

FINISH

FLANGE FACES : CHROMATE CONVERSION COATED
(PER MIL-DTL-5541F, TYPE II, CLASS 1A)
EXTERIOR : NONE

REVISIONS

ZONE	REV.	DESCRIPTION	DATE	APPROVED
	A	SEE CN № 13225	2014/10/13	N. Huffman



NOTES: UNLESS OTHERWISE SPECIFIED.

DO NOT SCALE DRAWINGS		APPROVALS	DATE	GENERAL DYNAMICS PROPRIETARY	
UNLESS OTHERWISE SPECIFIED, INTERPRET DIMENSIONING & TOLERANCING PER ANSI/ASME Y14.5M-2009. DIMENSIONS ARE IN INCHES. DIMENSIONS SHOWN IN [] ARE FOR REFERENCE ONLY.		DRAWN: H. Lim	14-10-15	GENERAL DYNAMICS	
TOLERANCES:		CHECKED: A. J. / M. B.	see CN	SATCOM Technologies	
SURFACE		RF DESIGN: J. Kerpan	see CN	3111 Fujita Street, Torrance CA 90505, (310) 539-6704	
TWO PLACE DECIMAL ± .01		WFO: J. Quicho	see CN	TITLE:	
THREE PLACE DECIMAL ± .002		SA: D. Peckham	see CN	SIDE-WALL COUPLER	
FOUR PLACE DECIMAL ± .0010		ENG MGR:		ASM, WR112	
ANGLES ± 0°30'		PROJECT:		SIZE CAGE CODE DWG No	
THIRD ANGLE PROJECTION	EAR CONTROLLED:	MATERIAL		C 50478	113059-7
Export or re-export subject to 15 CFR 700 - 799				SCALE: 1:1	WEIGHT: 0.957 LB SHEET 1 of 3
					REV A