

# SPECIFICATIONS

FREQUENCY BAND : 3.40 - 4.20 GHz

INSERTION LOSS : 0.10 dB MAX

VSWR : 1.20:1 MAX

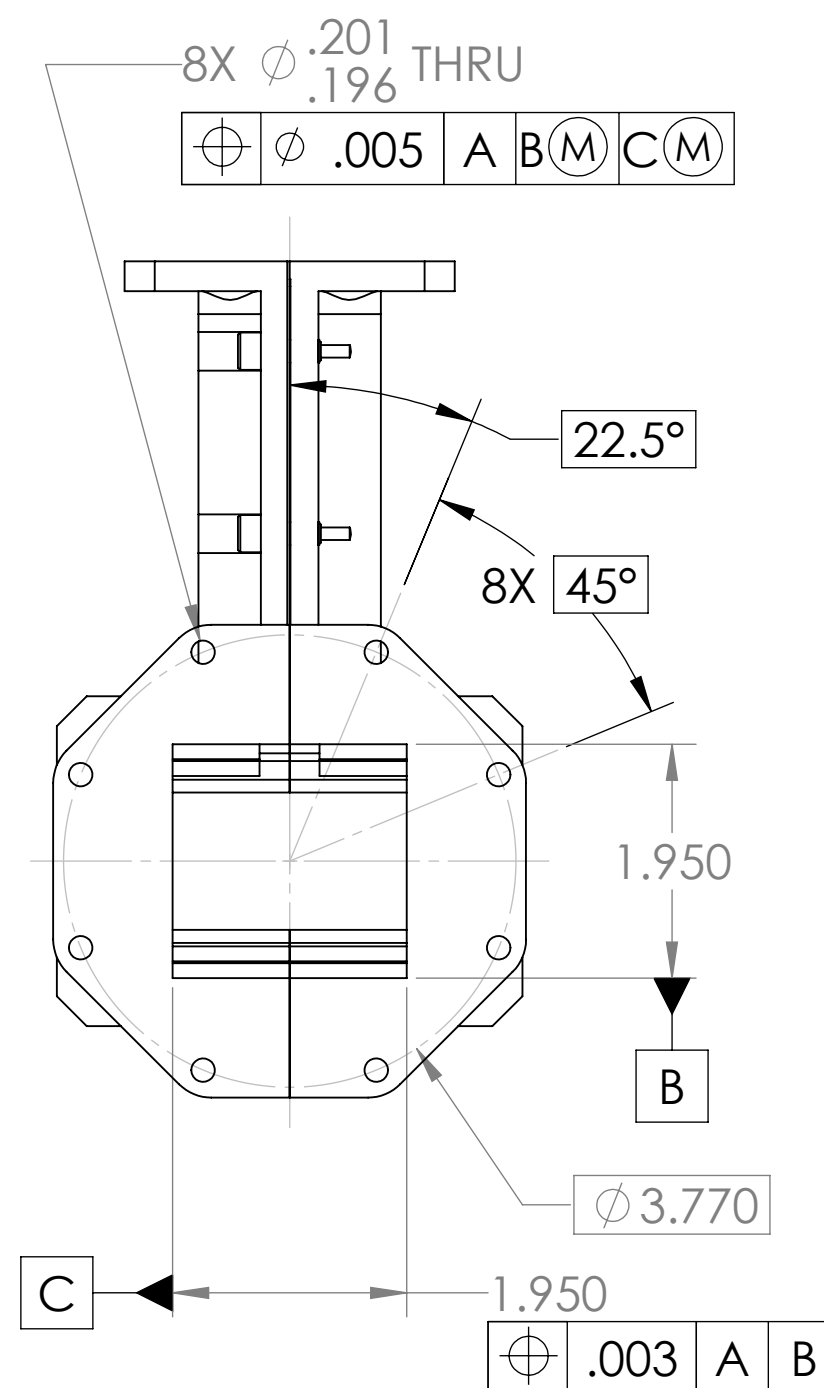
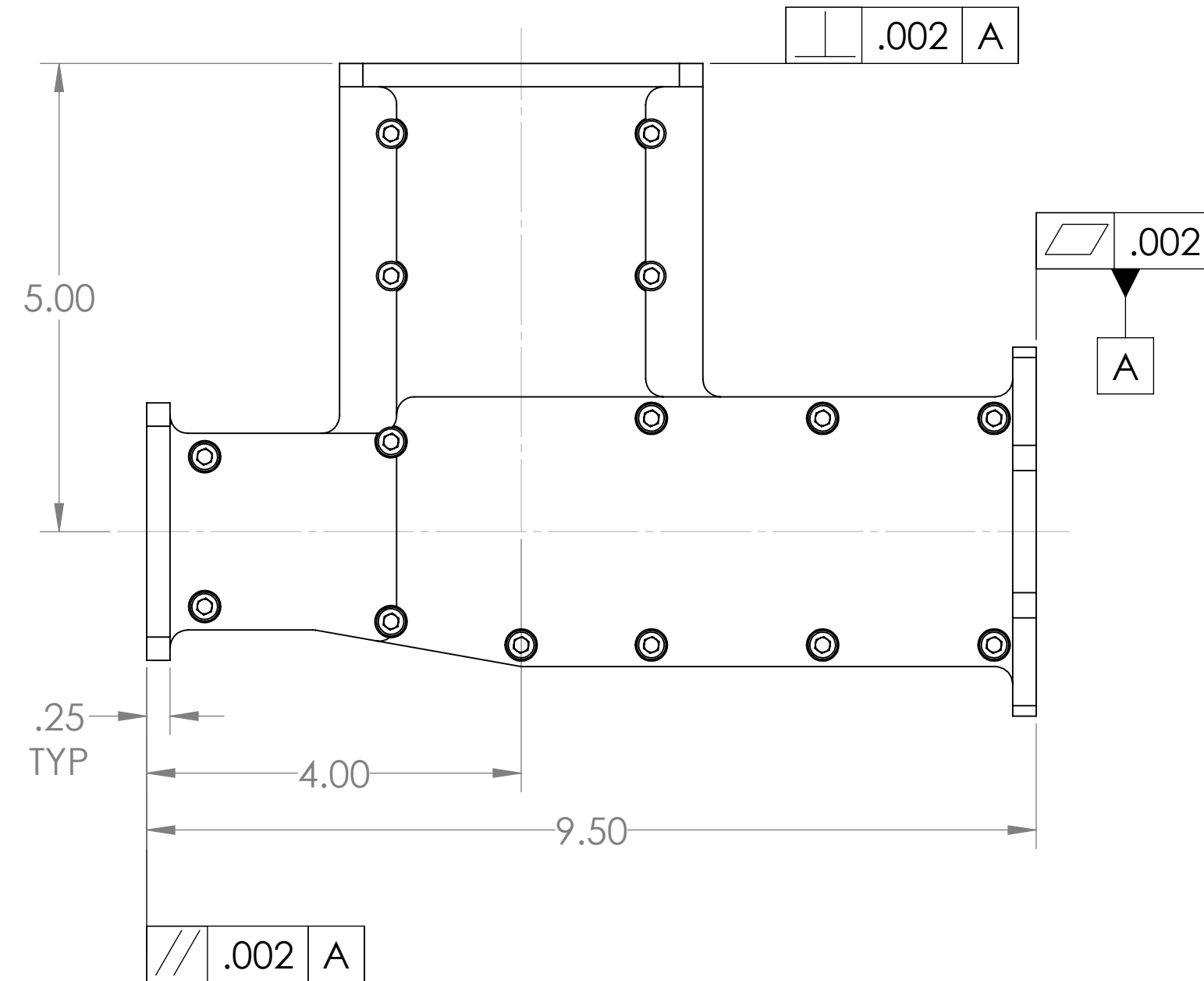
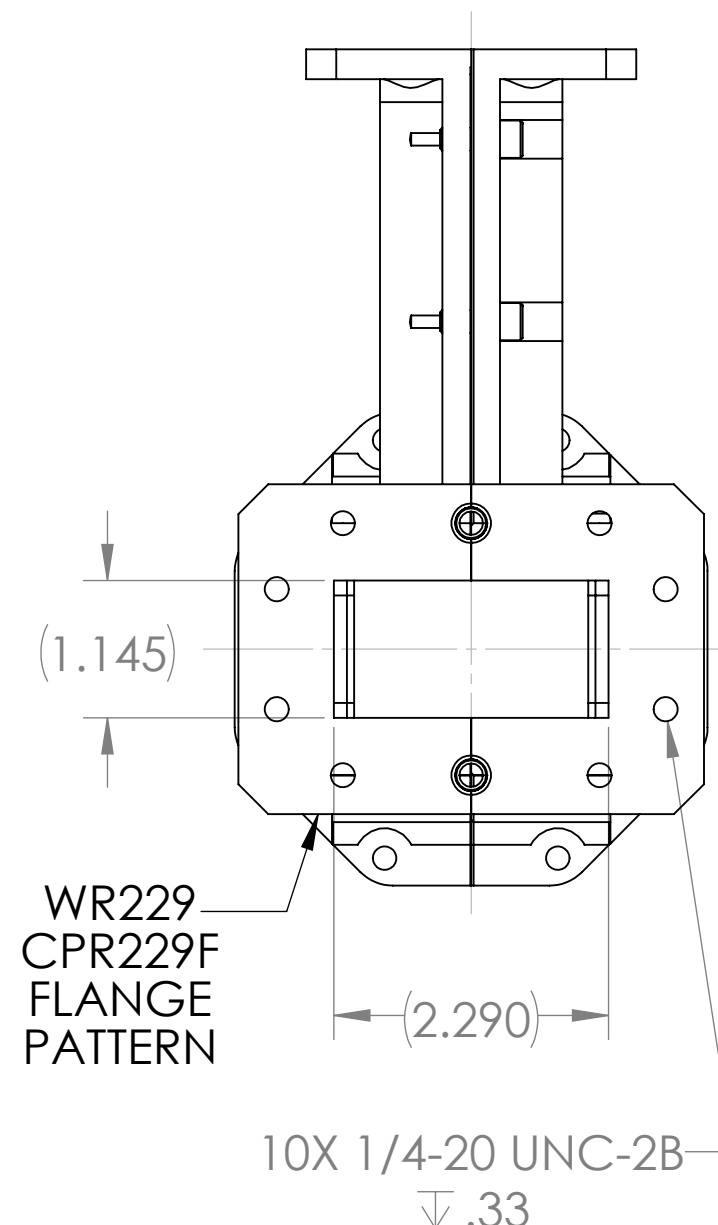
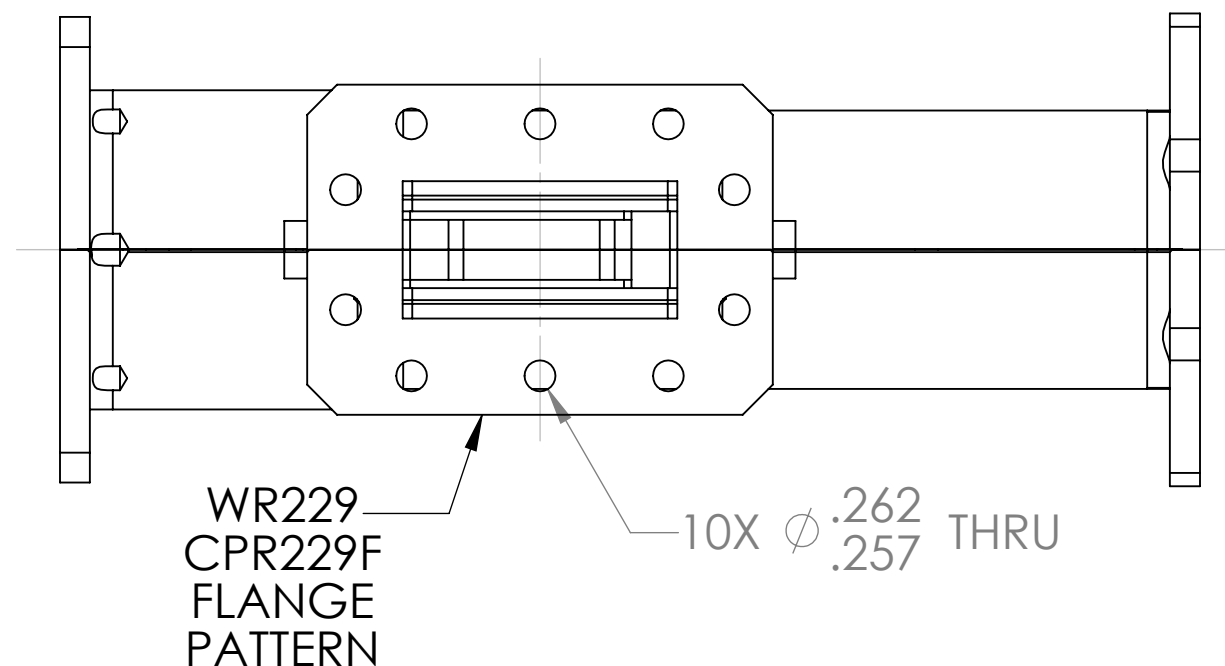
ISOLATION  
PORT - PORT : 35 dB MIN

CROSSPOL : 35 dB MIN

PRESSURIZATION : SEALED TO 1.0 PSIG

FINISH  
FLANGE FACES : CHROMATE CONVERSION COATED  
(PER MIL-DTL-5541F, TYPE II, CLASS 1A)  
EXTERIOR : NONE

REVISIONS				
ZONE	REV.	DESCRIPTION	DATE	APPROVED
	A	SEE CN № 13246	2014/11/14	N. Huffman
⊠	B	SEE CN 13353	4/6/2015	J. MITCHELL



NOTES: UNLESS OTHERWISE SPECIFIED.

DO NOT SCALE DRAWINGS		APPROVALS	DATE	GENERAL DYNAMICS PROPRIETARY	
UNLESS OTHERWISE SPECIFIED, INTERPRET DIMENSIONING & TOLERANCING PER ANSI/ASME Y14.5M-2009. DIMENSIONS ARE IN INCHES. DIMENSIONS SHOWN IN ( ) ARE FOR REFERENCE ONLY.		DRAWN: H. Lim	14-11-20	<b>GENERAL DYNAMICS</b>	
TOLERANCES:		CHECKED: A. J. / M. B.	see CN	SATCOM Technologies	
TWO PLACE DECIMAL ± .01		RF DESIGN: J. Kerpan	see CN	3111 Fujita Street, Torrance CA 90505, (310) 539-6704	
THREE PLACE DECIMAL ± .003		MFG: J. Quicho	see CN	TITLE:	
FOUR PLACE DECIMAL ± .0015		GA: D. Peckham	see CN	<b>OMT, C-BAND Rx/O</b>	
ANGLES ± 0°30'		ENG MGR:		<b>CPR229 I/F</b>	
THIRD ANGLE PROJECTION	EAR CONTROLLED:	MATERIAL		SIZE	REV
	Export or re-export subject to 15 CFR 700 - 799	CAGE CODE	DWG №	<b>C</b>	<b>B</b>
		SCALE: <b>5:8</b>	WEIGHT: 4.049 LB	SHEET 1 of 4	