

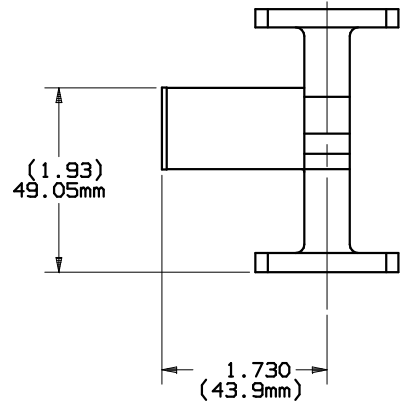
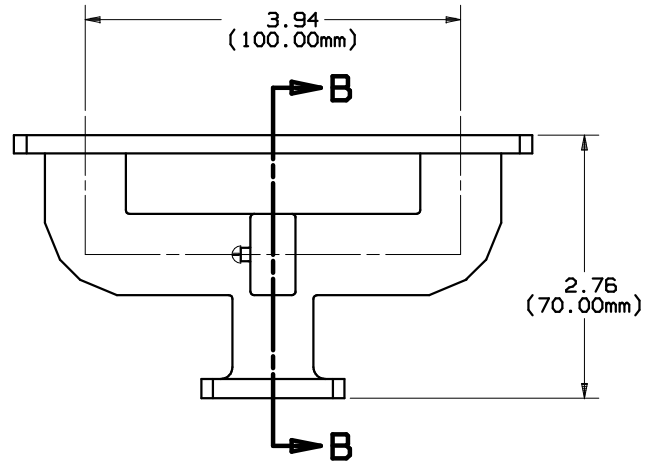
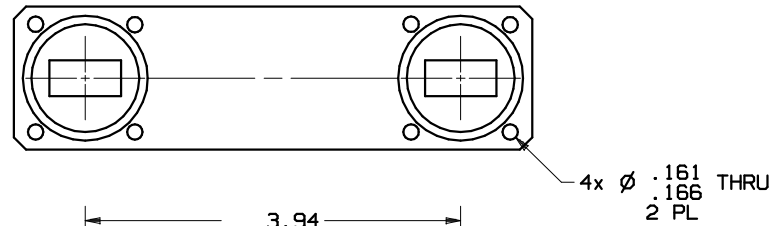
# SPECIFICATIONS

**FREQUENCY BAND** : 10.95 - 12.75 GHz  
**VSWR** : 1.2:1 MAX ALL PORTS  
**INSERTION LOSS**  
 (COMMON PORT TO INPUTS) : 3.1 dB MAX  
**PHASE BALANCE** : ±5° (COMBINING PORTS)  
**ISOLATION (INPUT PORTS)**: 20 dB MIN  
**POWER HANDLING** : 20 Watts PER INPUT PORT

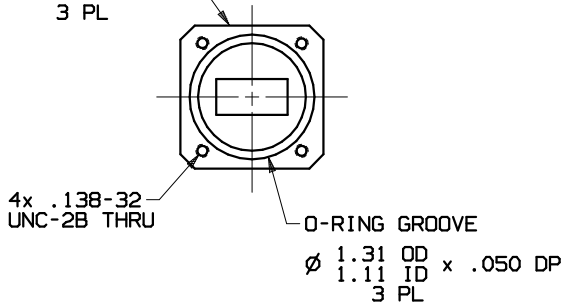
**FINISH**: CAD PLATE PER QQ-P-416, TYPE II,  
 CLASS 2

## REVISIONS

REV	DESCRIPTION	DATE	APPROVED
A	SEE REVISION SHEET	07-28-05	



WR75 FLANGE  
 INTERFACE  
 3 PL



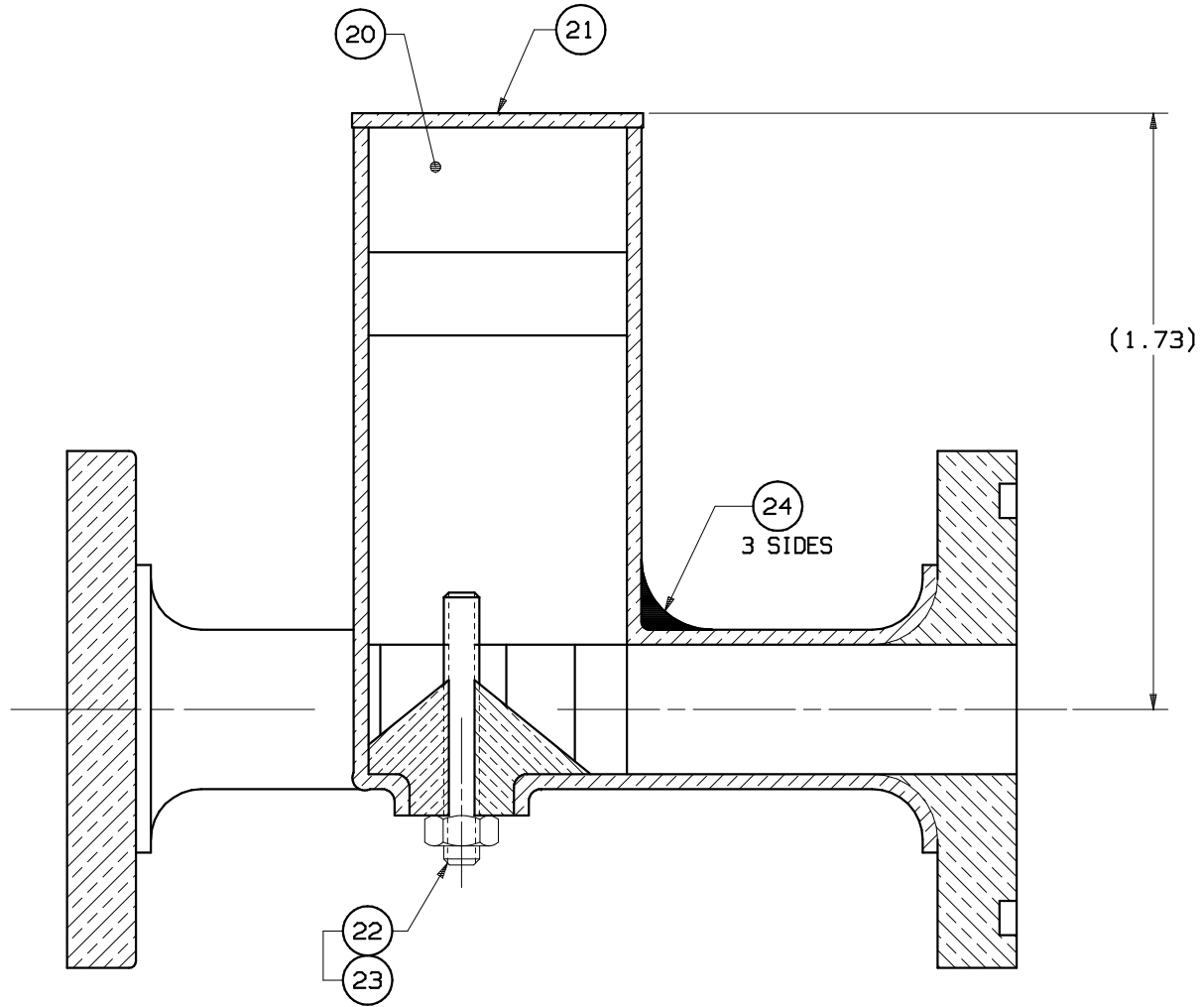
UNLESS OTHERWISE SPECIFIED	SIGNATURES	DATE
DIMENSIONS ARE IN INCHES	DRAWN: H. Lim	09-04-02
TOLERANCES-	CHECKED:	09-05-02
SURFACE .XX ±.01	ENGRG:	
32 .XXX ±.002	MFG:	
✓ .XXXX ±.0010		
ANGLES±		
MATERIAL		
FINISH		

**GENERAL DYNAMICS**  
**C4 SYSTEMS**  
 VertexRSI™ Torrance Facility  
 3111 Fujita St., Torrance, CA 90505, (310)539-6704

**Ku-BAND 2-WAY  
 POWER SPLITTER**

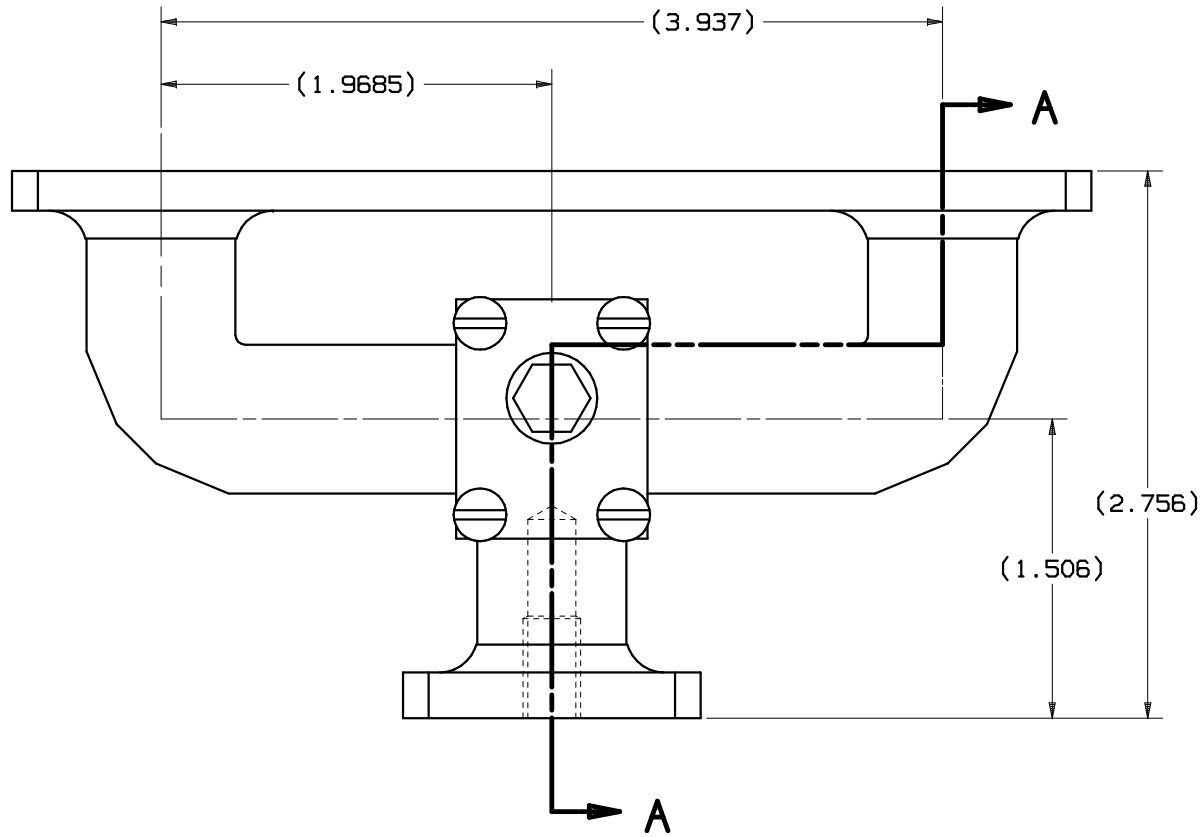
SIZE	FSCM NO.	DWG NO.	REV
C	50478	112769-11	A
SCALE: 1:1			SHEET 1 of 4

NOTES: UNLESS OTHERWISE SPECIFIED.



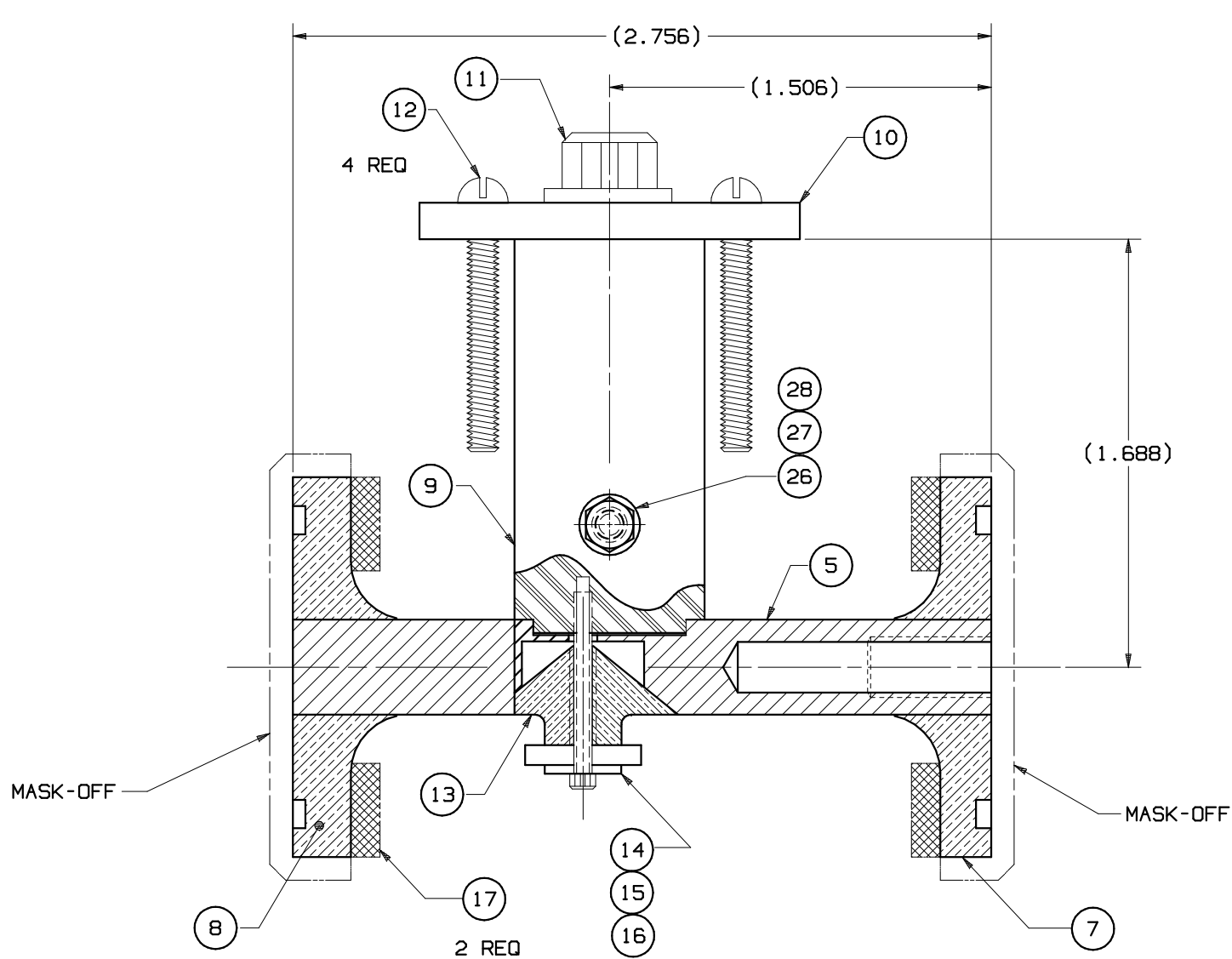
VIEW B-B

SIZE	FSCM NO.	DWG NO.	REV
C	50478	112769-11	A
SCALE: 7:2		SHEET 2 of 6	



MANDREL ASSEMBLY

SIZE	FSCM NO.	DWG NO.	REV
C	50478	112769-11	A
SCALE: 2:1		SHEET 3 of 4	



SECTION A-A

SIZE	FSCM NO.	DWG NO.	REV
C	50478	112769-11	A
SCALE: 11:4		SHEET 4 of 4	