

# SPECIFICATIONS

**FREQUENCY BAND** RX: 10.70 - 12.20 GHz  
 TX: 12.75 - 14.50 GHz

**INSERTION LOSS** RX: 0.50 dB  
 TX: 0.35 dB

**VSWR** RX: 1.25:1 MAX  
 TX: 1.25:1 MAX

**ISOLATION** TX/RX: 85 dB MIN.  
 RX/TX: 50 dB MIN.  
 RX/RX: 35 dB MIN.  
 TX/TX: 35 dB MIN.

**CROSSPOL** : 35 dB MIN.

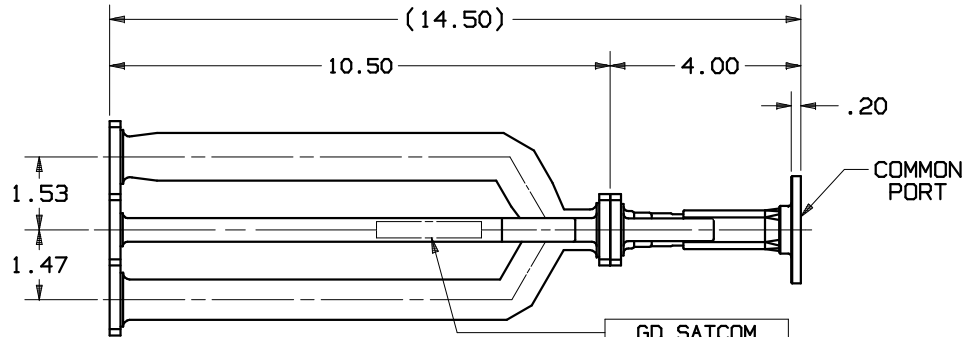
**POWER HANDLING** : 2 KW CW  
 (1 KW PER TX PORT)

**PRESSURIZATION:** SEALED TO 5 PSIG.

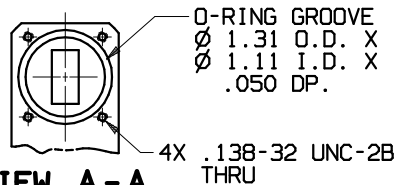
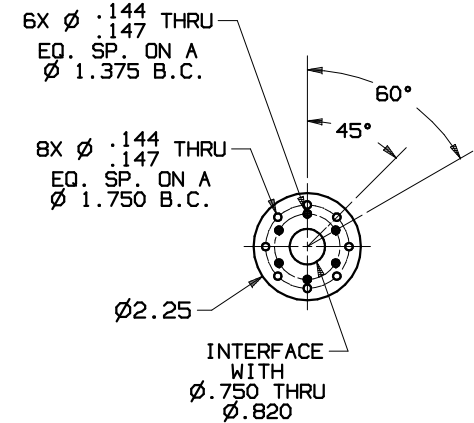
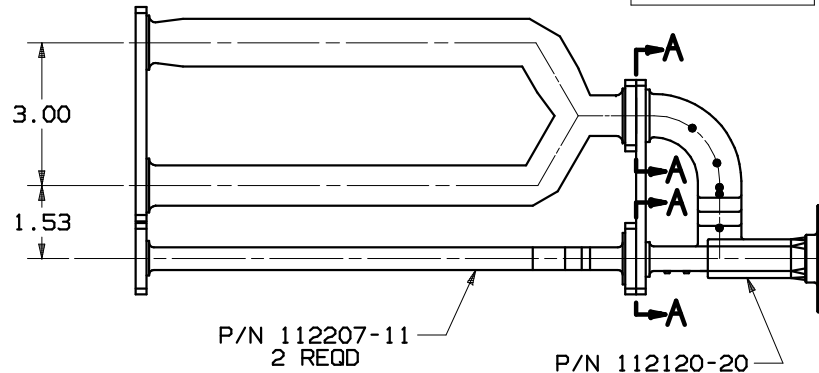
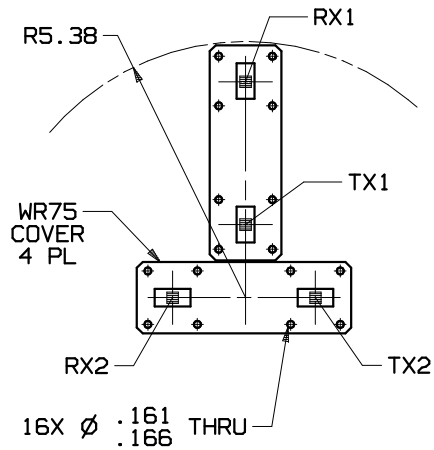
**FINISH**  
 FLANGE FACES: CHROMATE CONVERSION COATED  
 EXTERIOR: WHITE PAINT, COLOR #17875 PER FED-STD-595

## REVISIONS

REV	DESCRIPTION	DATE	APPROVED
C	SEE ECN# 3156	10-27-10	



GD SATCOM  
 50478 XX-XX  
 P/N 112215-1  
 S/N XXX



**VIEW A-A**  
 (TYPICAL 2 PL)

NOTES: UNLESS OTHERWISE SPECIFIED.

UNLESS OTHERWISE SPECIFIED		SIGNATURES	DATE	GENERAL DYNAMICS PROPRIETARY	
DIMENSIONS ARE IN INCHES		DRAWN: L. TOVALIN	10-22-99	<b>GENERAL DYNAMICS</b> SATCOM Technologies 3111 Fujita St., Torrance, CA 90505, (310) 539-6704	
TOLERANCES-		CHECKED: H. SPIELEDER	10-22-99		
SURFACE .XX ±.03		ENGRG:		<b>Ku-BAND</b> <b>4-PORT DIPLEXER</b>	
SURFACE .XXX ±.002		ENGRG:			
SURFACE .XXXX ±.		ENGRG:		SIZE FSCM NO. DWG NO. <b>112215-1</b> REV C SCALE: 1:2 SHEET 1	
63 ✓ ANGLES±		EAR CONTROLLED: Export or re-export subject to 15 CFR 700-799.			
MATERIAL COPPER					
FINISH					