

SPECIFICATIONS

FREQUENCY BAND RX: 10.70-12.75 GHz
TX: 13.75-14.50 GHz

INSERTION LOSS RX: 0.50 dB
TX: 0.35 dB

VSWR RX: 1.25:1 MAX
TX: 1.25:1 MAX

ISOLATION TX/RX: 85 dB MIN.
RX/TX: 70 dB MIN.
RX/RX: 35 dB MIN.
TX/TX: 35 dB MIN.

CROSSPOL : 35 dB MIN.

PRESSURIZATION : SEALED TO 5 PSIG

FINISH
FLANGE FACES: CHROMATE
CONVERSION COATED
EXTERIOR: BLACK PAINT
COLOR NO. 37038
PER FED-STD-595

POWER HANDLING : 5.0 KW CW
(2.5 KW PER TX PORT)

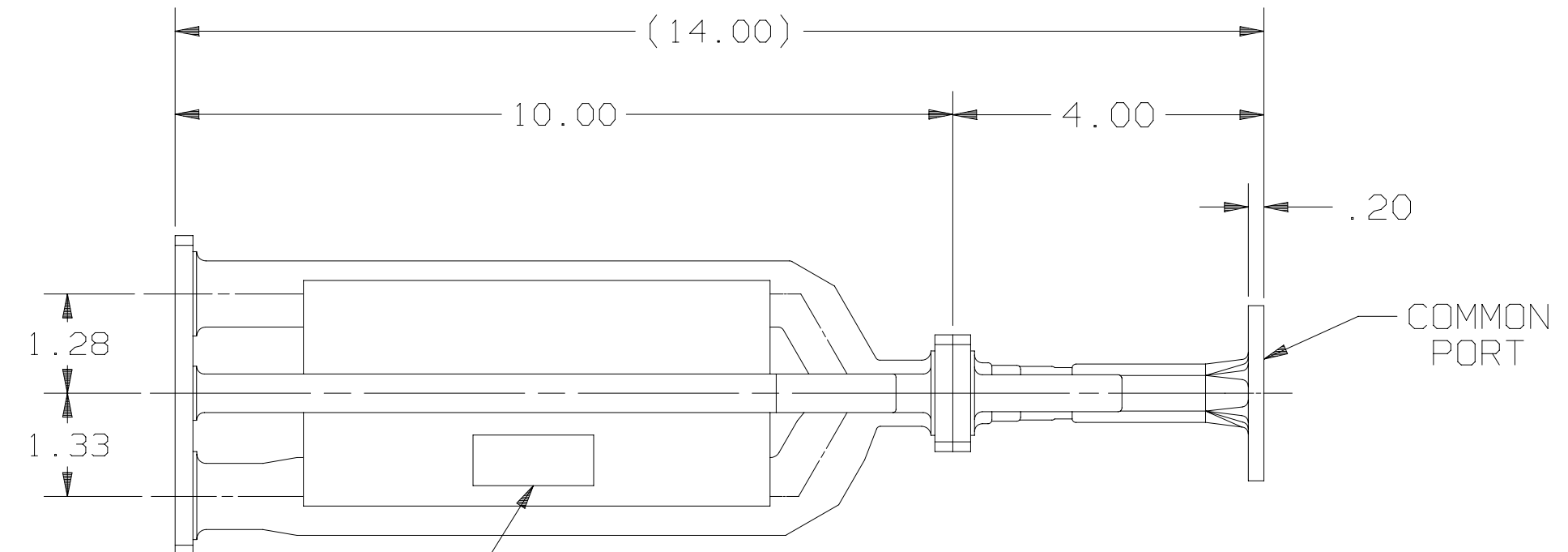
APPROXIMATE HEAT DISSIPATION AT

500 W CW:	28 W
1000 W CW:	56 W
1500 W CW:	84 W
2000 W CW:	112 W
3000 W CW:	168 W
4000 W CW:	224 W
5000 W CW:	280 W

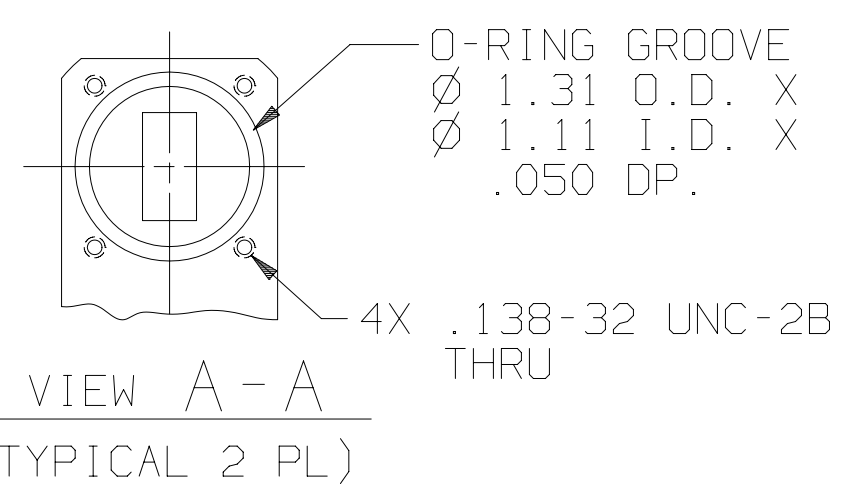
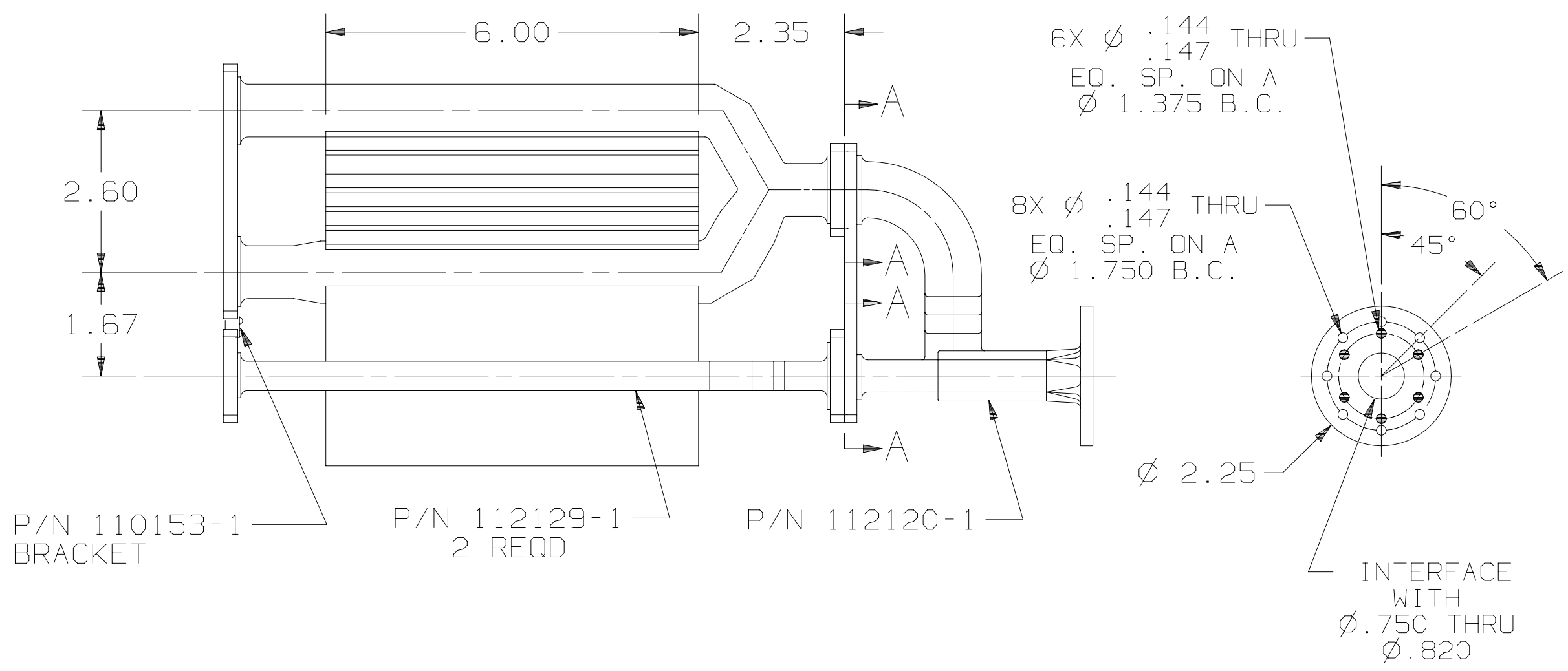
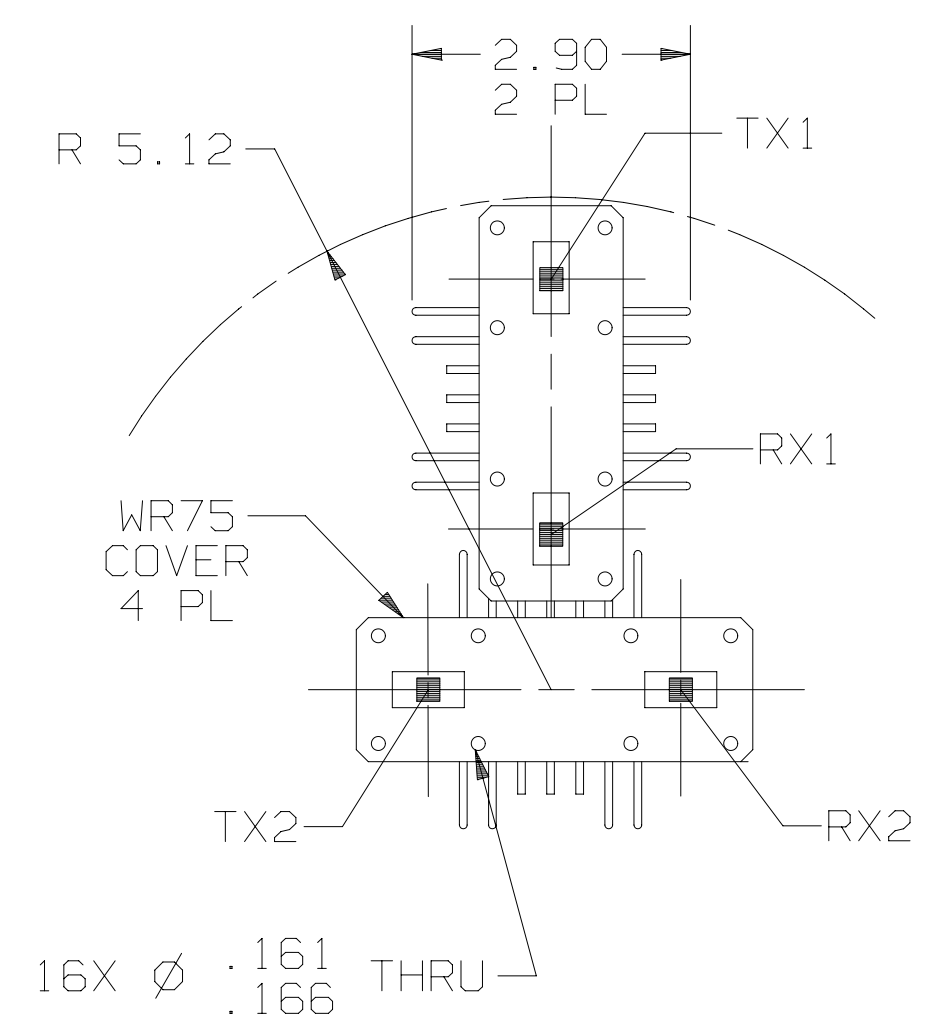
TOTAL HEAT DISSIPATION AREA : 625 IN²
MAX OPERATING TEMP: 115°C

REVISIONS

REV	DESCRIPTION	EFFECTIVE DATE	APPROVED BY
D	DR# 12073		



GD SATCOM
50478 XX-XX
P/N 112132-2
S/N XXX



NOTES: UNLESS OTHERWISE SPECIFIED.

UNLESS OTHERWISE SPECIFIED	SIGNATURES	DATE
DIMENSIONS ARE IN INCHES	DRAWN: L. TOVALIN	07-22-99
TOLERANCES-	CHECKED: H. SPIELEDER	07-22-99
SURFACE .XX ±.03	ENGRG:	
63 .XXX ±.002	ENGRG:	
.XXXX ±.		
✓ ANGLES±		
MATERIAL	EAR CONTROLLED:	
COPPER	Export or re-export subject to 15 CFR 700-799.	
FINISH		

GENERAL DYNAMICS PROPRIETARY			
GENERAL DYNAMICS			
SATCOM Technologies			
3111 Fujita St., Torrance, CA 90505, (310) 539-6704			
KU-BAND			
4-PORT DIPLEXER HP			
SIZE	FSCM NO.	DWG NO.	REV
C	50478	112132-2	D
SCALE: 1/1			SHEET 1