

SPECIFICATIONS

FREQUENCY BAND : 10.70 - 14.50 GHz
(BOTH ARMS)

INSERTION LOSS Rx: 0.10 dB MAX
Tx: 0.10 dB MAX

VSWR Rx: 1.20:1 MAX
Tx: 1.20:1 MAX

CROSSPOL : 35 dB MIN

POWER HANDLING : 4 KW CW

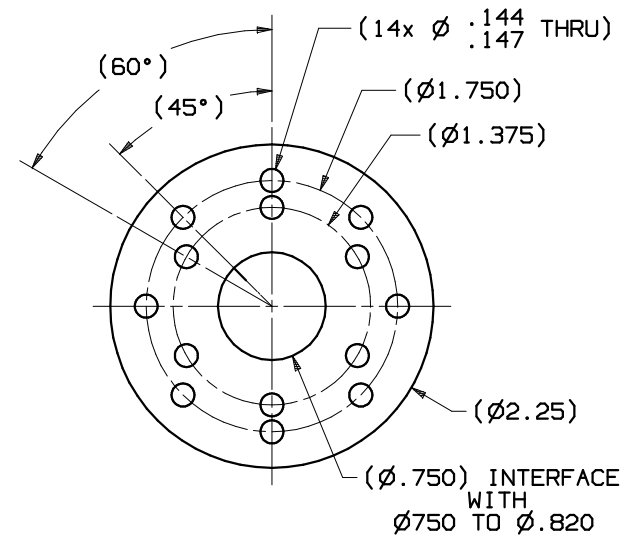
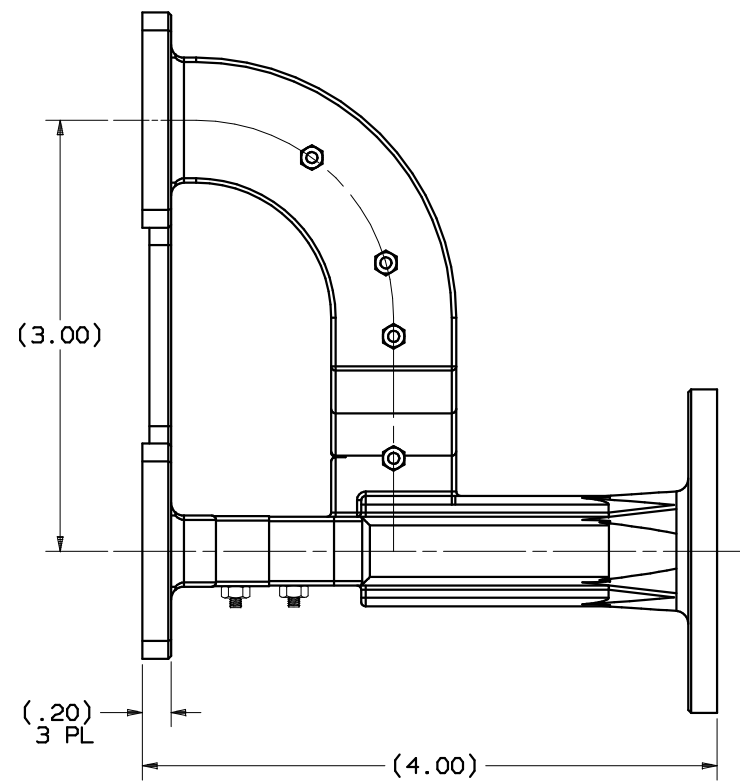
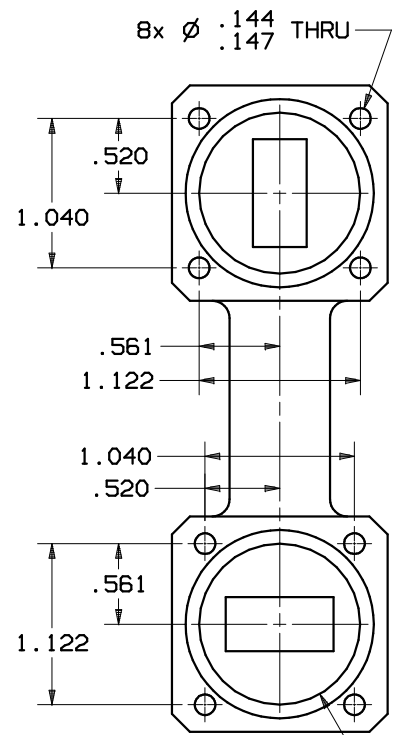
PRESSURIZATION : SEALED TO 5.0 PSIG

FINISH INTERIOR
FLANGE FACES: CHROMATE CONVERSION COATED PER MIL-DTL-5541F, TYPE II, CLASS 1A

EXTERIOR: NONE

REVISIONS

REV	DESCRIPTION	EFFECTIVE DATE	APPROVED
A	DR No 10369	05-13-11	J.O.



NOTES: UNLESS OTHERWISE SPECIFIED.

UNLESS OTHERWISE SPECIFIED INTERPRET DIMENSIONING & TOLERANCING PER ANSI Y14.5M-1982. DIMENSIONS ARE IN INCHES. DIMENSIONS SHOWN IN () ARE FOR REFERENCE ONLY. TOLERANCES ARE: SURFACE - TOLERANCES - .XX ±.01 .XXX ±.002 .XXXX ± ANGLES ±0°30' MATERIAL: CAST ALUMINUM	APPROVALS DRAWN: H. Lim CHECKED: J. Quicho ENG-MGR: MFG-ENG: DA:	DATE 02-02-11 02-11-11	GENERAL DYNAMICS PROPRIETARY GENERAL DYNAMICS SATCOM Technologies 3111 Fujita St., Torrance, CA 90505, (310) 539-6704	
	EAR CONTROLLED: Export or re-export subject to 15 CFR 700-799.		Ku-BAND Rx/Tx OMT	
	SIZE: C 50478		DWG No: 112120-17	
	SCALE: 3:2		REV: A SHEET: 1	