

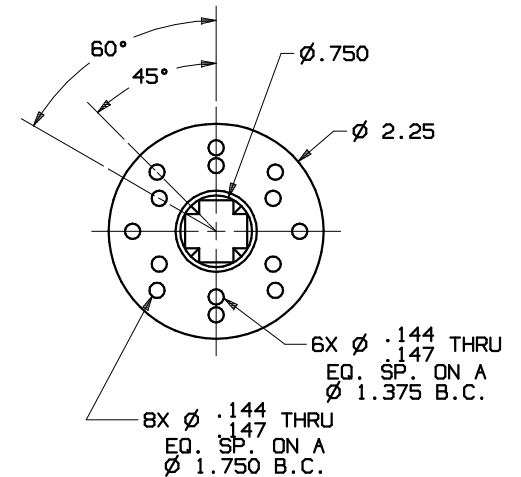
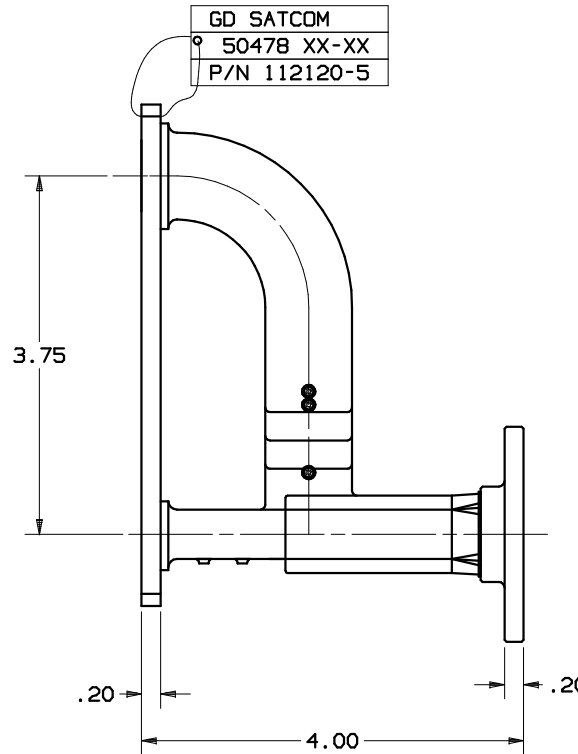
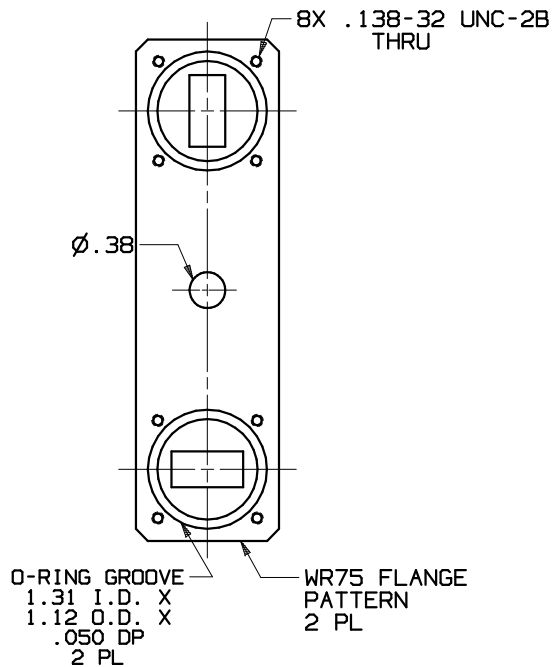
**SPECIFICATIONS**

**FREQUENCY BAND** : 10.70 - 14.50 GHz  
**INSERTION LOSS** Rx: 0.10 dB MAX  
Tx: 0.10 dB MAX  
**VSWR** Rx: 1.20:1 MAX  
Tx: 1.20:1 MAX  
**CROSSPOL** : 40 dB MIN  
**POWER HANDLING** : 1 kW CW  
(500 W PER Tx PORT)

**PRESSURIZATION**: SEALED TO 5 PSIG.  
**FINISH**  
**FLANGE FACES**: CAD PLATED PER QQ-P-416,  
TYPE 2, CLASS II  
**EXTERIO**: WHITE PAINT, COLOR No 17875  
PER FED-STD-595

**REVISIONS**

| REV | DESCRIPTION   | DATE     | APPROVED |
|-----|---------------|----------|----------|
| A   | SEE ECN# 1534 | 08-13-07 | J.Kerpan |



| DO NOT SCALE DRAWINGS   |  | APPROVALS  | DATE     | GENERAL DYNAMICS PROPRIETARY   |  |
|---|--|--|----------|--|--|
| <small>INTERPRET DIMENSIONING AND TOLERANCING PER ANSI Y14.5M-1992. DIMENSIONS ARE IN INCHES. DIMENSIONS SHOWN IN ( ) ARE FOR REFERENCE ONLY. TOLERANCES ARE:<br/> SURFACE - TOLERANCES -<br/> . XX ± .01<br/> . XXX ± .002<br/> . XXXX ± .001<br/> ANGLES ±0°30'</small> |  | DRAWN: L. TOVALIN  | 11-28-00 | <b>GENERAL DYNAMICS</b><br><b>SATCOM Technologies</b><br>3111 Fujita St., Torrance, CA 90505, (310) 539-6704<br><br><b>Ku-BAND OMT, Rx/Tx,</b><br><b>10.70-14.50 GHz</b> |  |
|   |  | CHECKED: J. Kerpan   | 08-13-07 |  |  |
|   |  | RF-ENG:  |          |  |  |
|   |  | MFG-ENG:   |          |  |  |
| <small>THIRD ANGLE PROJECTION</small>   |  | <b>EAR CONTROLLED:</b><br>Export or re-export subject to 15 CFR 700-799. |          | <small>SIZE</small> C<br><small>FSCM No</small> 50478<br><small>DWG No</small> 112120-5<br><small>SCALE</small> 1:1  | <small>REV</small> A<br><small>SHEET</small> 1 |