

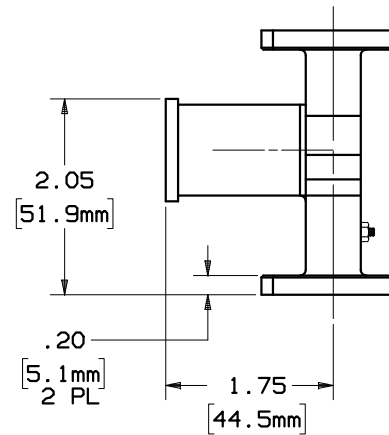
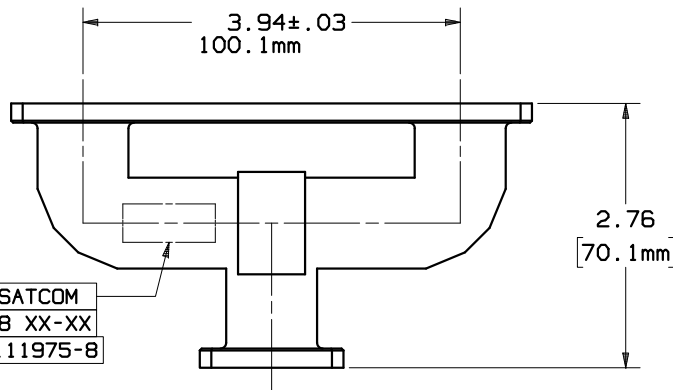
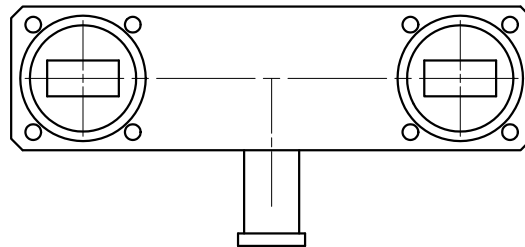
# SPECIFICATIONS

**FREQUENCY BAND** : 13.75 - 14.50 GHz  
**VSWR** : 1.2:1 MAX ALL PORTS  
**INSERTION LOSS**  
 (COMMON PORT TO INPUTS) : 3.2 dB MAX  
**PHASE BALANCE** : ±5° (COMBINING PORTS)  
**ISOLATION** (INPUT PORTS): 20 dB MIN  
**POWER HANDLING** : 25 W PER INPUT PORT

**PRESSURIZATION**: SEALED TO 2.0 PSI  
**FINISH**  
 INTERIOR AND  
 FLANGE FACES: CHEMFILMED PER MIL-C-5541C,  
 CLASS 1A  
 EXTERIOR: WHITE PAINT, COLOR #17875 PER  
 FED-STD-595.

## REVISIONS

REV	DESCRIPTION	DATE	APPROVED
B	SEE ECN 2441	09-08-09	



GD SATCOM  
 50478 XX-XX  
 P/N 111975-8

WR75 FLANGE  
 INTERFACE  
 3 PL

O-RING GROOVE  
 Ø 1.31 O.D. x .050 DP  
 1.11 I.D. x .050 DP  
 3 PL

4x Ø .161 THRU  
 .166  
 3 PL

UNLESS OTHERWISE SPECIFIED		SIGNATURES	DATE	GENERAL DYNAMICS PROPRIETARY			
DIMENSIONS ARE IN INCHES		DRAWN: C.G.ORTEGA	08-30-07	<b>GENERAL DYNAMICS</b> <b>SATCOM Technologies</b> 3111 Fujita St., Torrance, CA 90505, (310) 539-6704			
TOLERANCES-		CHECKED: H.Spieleeder	08-30-07				
SURFACE .XX ±.02		RF ENG:					
.XXX ±.003		ENG:					
63 ✓ ANGLES±		MFG:		<b>Ku-BAND 2-WAY POWER</b> <b>COMBINER</b>			
MATERIAL CAST		EAR CONTROLLED:					
ALY 356		Export or re-export subject to 15 CFR 700-799.					
FINISH				SIZE C	FSCM No. 50478	DWG No. 111975-8	REV B
				SCALE: 1:1	SHEET 1		