

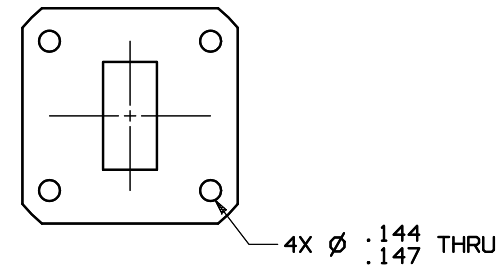
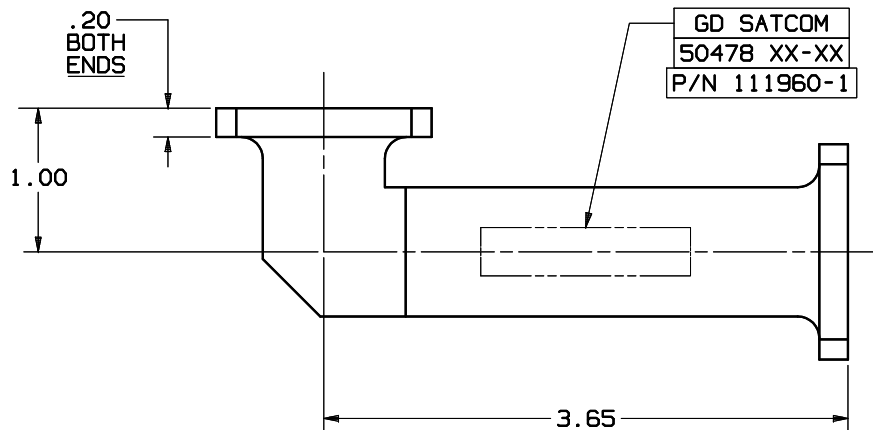
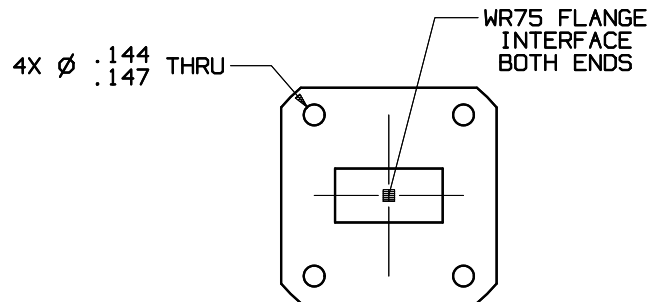
# SPECIFICATIONS

**PASSBAND** : 10.70 - 12.75 GHz  
**PASSBAND LOSS** : 0.20 dB TYPICAL  
                   : 0.30 dB MAX @ 12.75 GHz  
**PASSBAND VSWR** : 1.20:1 MAX  
**REJECTION** : 55 dB MIN AT 13.75-14.50 GHz

**PRESSURIZATION** : TESTED TO 5.0 PSIG  
**FINISH INTERIOR**  
 & FLANGE FACES: CHEMFILMED PER MIL-C-5541,  
 CLASS 1A  
**EXTERIOR**: WHITE PAINT, COLOR #17875  
 PER FED-STD-595

## REVISIONS

REV	DESCRIPTION	DATE	APPROVED
E	SEE REVISION RECORD	07-14-05	



NOTES: UNLESS OTHERWISE SPECIFIED.

UNLESS OTHERWISE SPECIFIED		SIGNATURES	DATE	GENERAL DYNAMICS PROPRIETARY			
DIMENSIONS ARE IN INCHES		DRAWN: L TOVALIN	05-14-98	<b>GENERAL DYNAMICS</b> <b>SATCOM Technologies</b> 3111 Fujita St., Torrance, CA 90505, (310) 539-6704  <h2 style="margin: 0;">Ku-BAND FILTER</h2> <h3 style="margin: 0;">10.70 - 12.75 GHz</h3>			
TOLERANCES-		CHECKED: H. SPIELEDER	05-14-98				
SURFACE	.XX ±.02 .XXX ±.002 .XXXX ±.0010	RF ENGR:					
ANGLES	±0° 30'	ENGR:					
MATERIAL:		EAR CONTROLLED:		Export or re-export subject to 15 CFR 700-799.			
CAST ALUMINUM ALY A356							
NEXT ASSY:				SIZE	FSCM No.	DWG No.	REV
				C	50478	111960-1	E
				SCALE: 3:2		SHEET 1	