

9 8 7 6 5 4 3 2 1

SPECIFICATIONS

FREQUENCY BAND RX: 10.70 - 12.75 GHz  
TX: 13.75 - 14.50 GHz

INSERTION LOSS RX: .10 dB MAX  
TX: .10 dB MAX

VSWR RX: 1.2:1 MAX  
TX: 1.2:1 MAX

CROSSPOL : 35 dB MIN

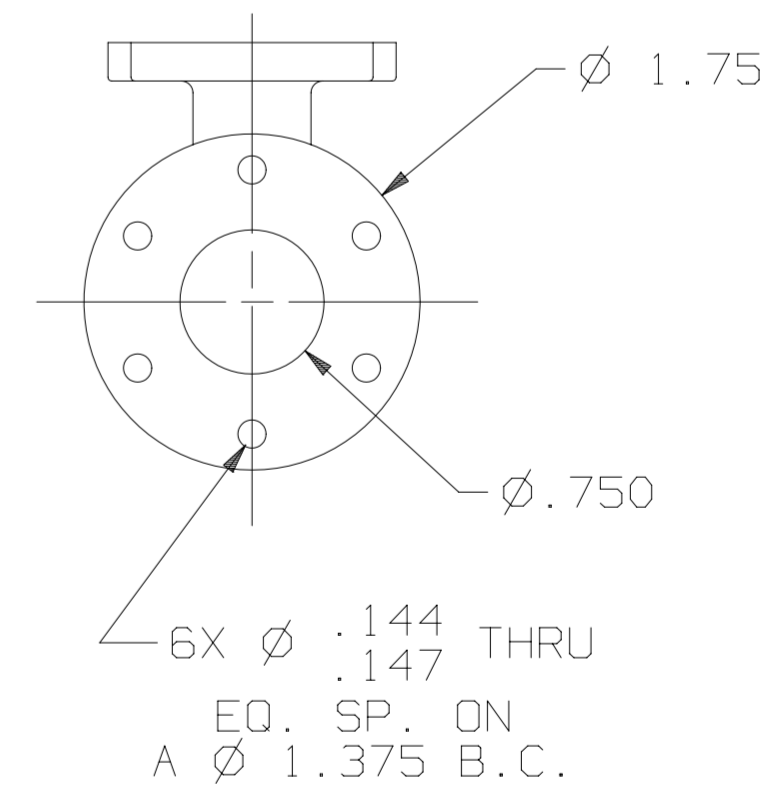
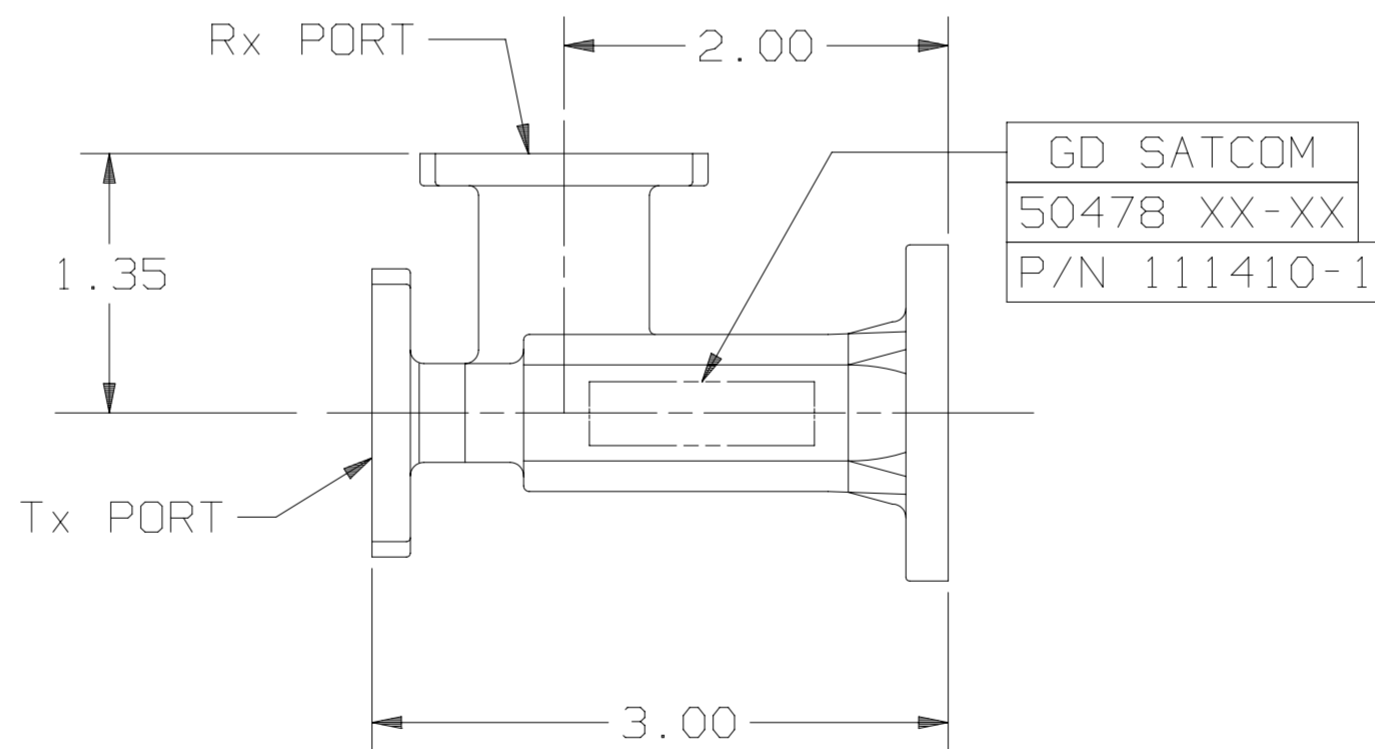
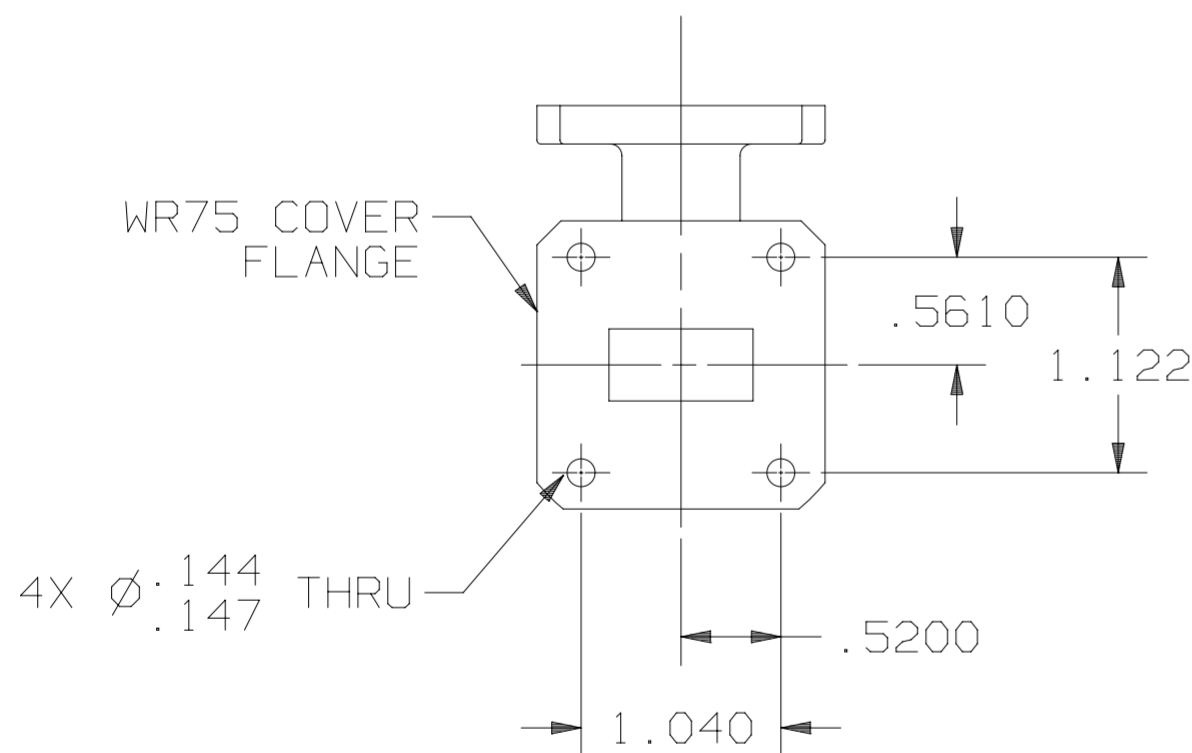
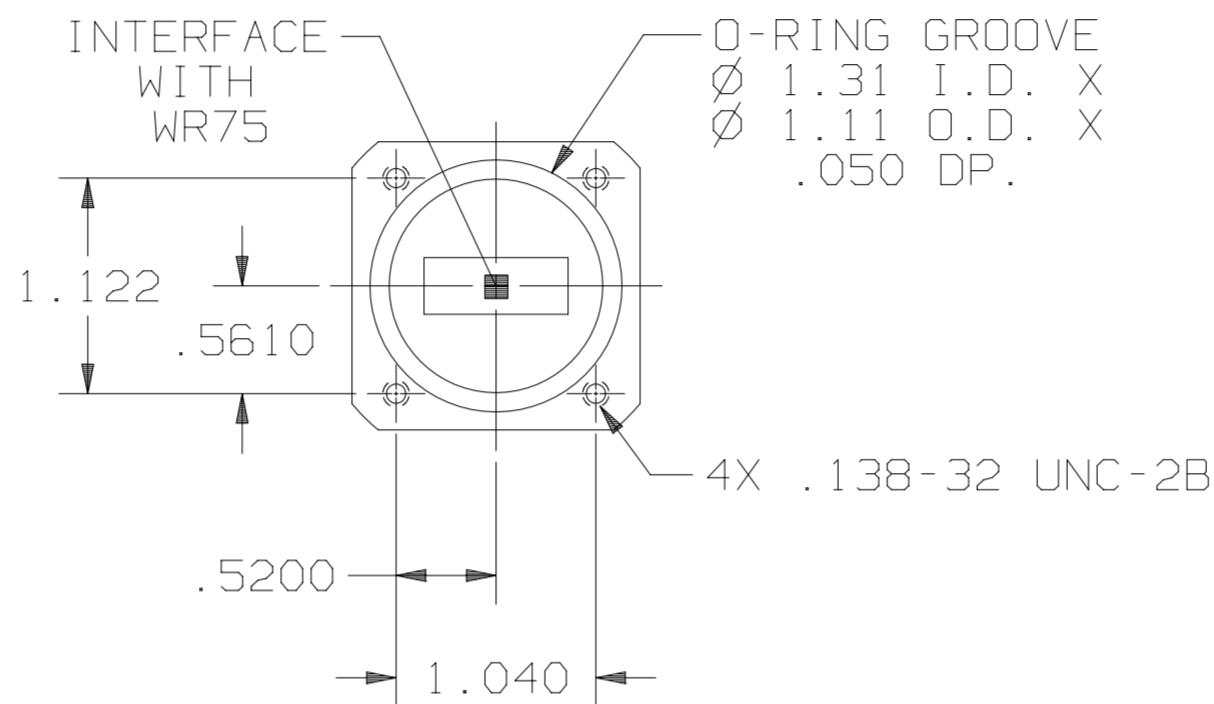
PORT TO PORT RX: 35 dB MIN  
TX: 35 dB MIN

POWER HANDLING: 3 KW CW

PRESSURIZATION: SEALED TO 5 PSIG

FINISH:  
INTERIOR AND  
FLANGE FACES: CHROMATE CONVERSION COATED PER  
MIL-DTL-5541F, TYPE II, CLASS 1A  
EXTERIOR: PAINT WHITE COLOR #17875  
PER FED-STD-595

REVISIONS			
REV	DESCRIPTION	DATE	APPROVED
D	SEE ECN #2104	01-30-09	H.S.



NOTES: UNLESS OTHERWISE SPECIFIED.

UNLESS OTHERWISE SPECIFIED INTERPRET DIMENSIONING & TOLERANCING PER ANSI Y14.5M-1982. DIMENSIONS ARE IN INCHES. DIMENSIONS SHOWN IN ( ) ARE FOR REFERENCE ONLY. TOLERANCES ARE:  SURFACE- TOLERANCES- 63 ✓ .XX ±.01 .XXX ±.003 .XXXX ± ANGLES ±0°30'	APPROVALS	DATE	GENERAL DYNAMICS PROPRIETARY			
	DRAWN: L TOVALIN	04-10-96	GENERAL DYNAMICS SATCOM Technologies 3111 Fujita St., Torrance, CA 90505, (310) 539-6704			
	CHECKED: H.SPIELEDER	10-08-99				
	MATERIAL: AL CASTING	EAR CONTROLLED: Export or re-export subject to 15 CFR 700-799.		SIZE: C	FSCM No.: 50478	DWG No.: 111410-1
			SCALE: 1:1	SHEET 1		