

SPECIFICATIONS

FREQUENCY BAND Tx: 17.3 - 18.4 GHz
Rx: 10.7 - 12.75 GHz

INSERTION LOSS Tx: 0.25 dB MAX
Rx: 0.25 dB MAX

VSWR Tx: 1.25:1 MAX
Rx: 1.25:1 MAX

ISOLATION Rx/Rx: 35 dB MIN
Tx/Tx: 35 dB MIN
Tx/Rx: 85 dB MIN
Rx/Tx: 85 dB MIN

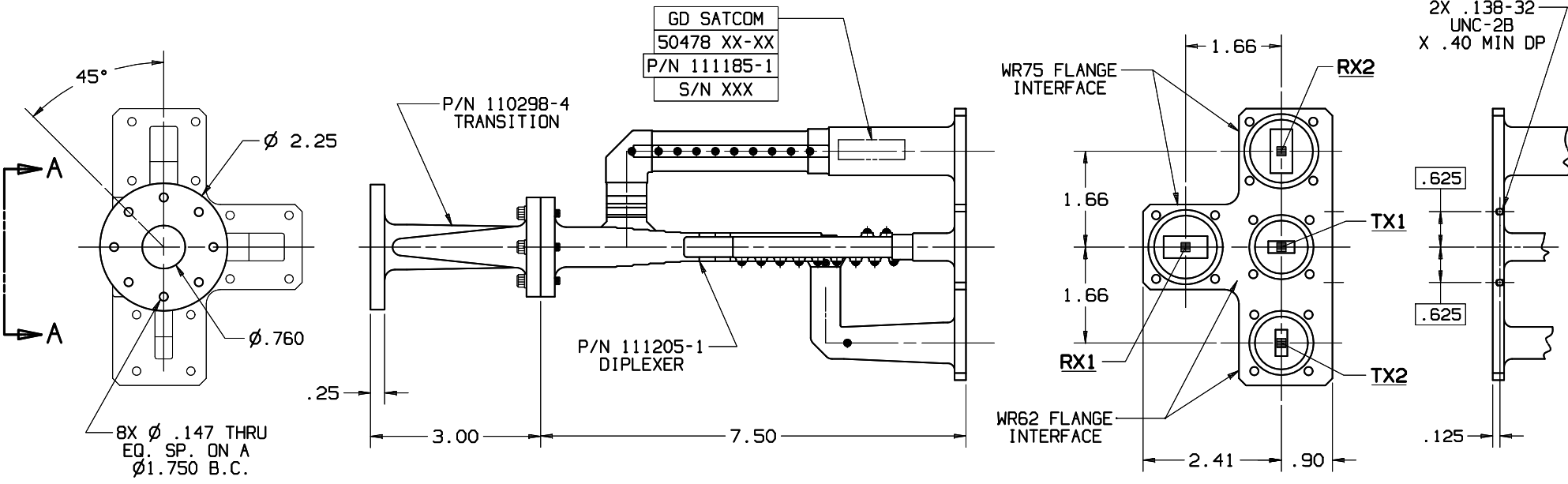
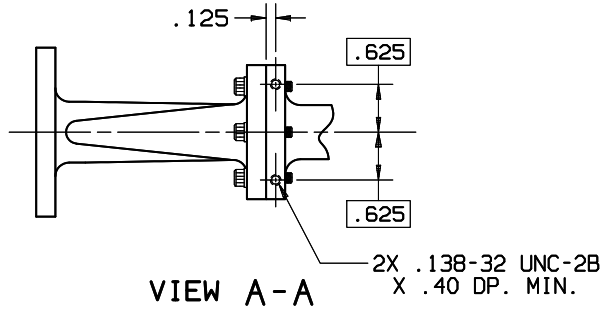
CROSS POL : 35.0 dB MIN

POWER HANDLING: 2.5 kW (1.25 kW PER Tx PORT)

FINISH
COMMON PORT
FLANGE: ZINC-NICKEL PLATED PER AMS 2417G, TYPE II, CLASS 2

Rx AND Tx PORT
FLANGES: COPPER ALLOY
EXTERIOR: WHITE PAINT, COLOR #17875 PER FED-STD-595

REVISIONS			
REV	DESCRIPTION	EFFECTIVE DATE	APPROVED BY
G	DR# 10110	04-19-11	M. Lanes



NOTES: UNLESS OTHERWISE SPECIFIED.

UNLESS OTHERWISE SPECIFIED INTERPRET DIMENSIONING & TOLERANCING PER ANSI Y14.5M-1982. DIMENSIONS ARE IN INCHES. DIMENSIONS SHOWN IN () ARE FOR REFERENCE ONLY. TOLERANCES ARE: SURFACE - TOLERANCES - .XX ±.02 .XXX ±.002 .XXXX ± ANGLES ±0°30' MATERIAL: 32 ✓	APPROVALS DRAWN: L. TOVALTN 09-12-95 CHECKED: H. SPIELEDER 04-02-96 ENGRG: HFG: QA:	DATE 09-12-95 04-02-96	GENERAL DYNAMICS PROPRIETARY GENERAL DYNAMICS SATCOM Technologies 3111 Fujita St., Torrance, CA 90505, (310) 539-6704		
	EAR CONTROLLED: Export or re-export subject to 15 CFR 700-799.			Ku-BAND 4-PORT DIPLEXER LINEAR POLARIZED	
	SCALE: 3:4	SIZE C 50478	FSCM No. 111185-1	DWG No. 111185-1	REV G
	SHEET 1				