


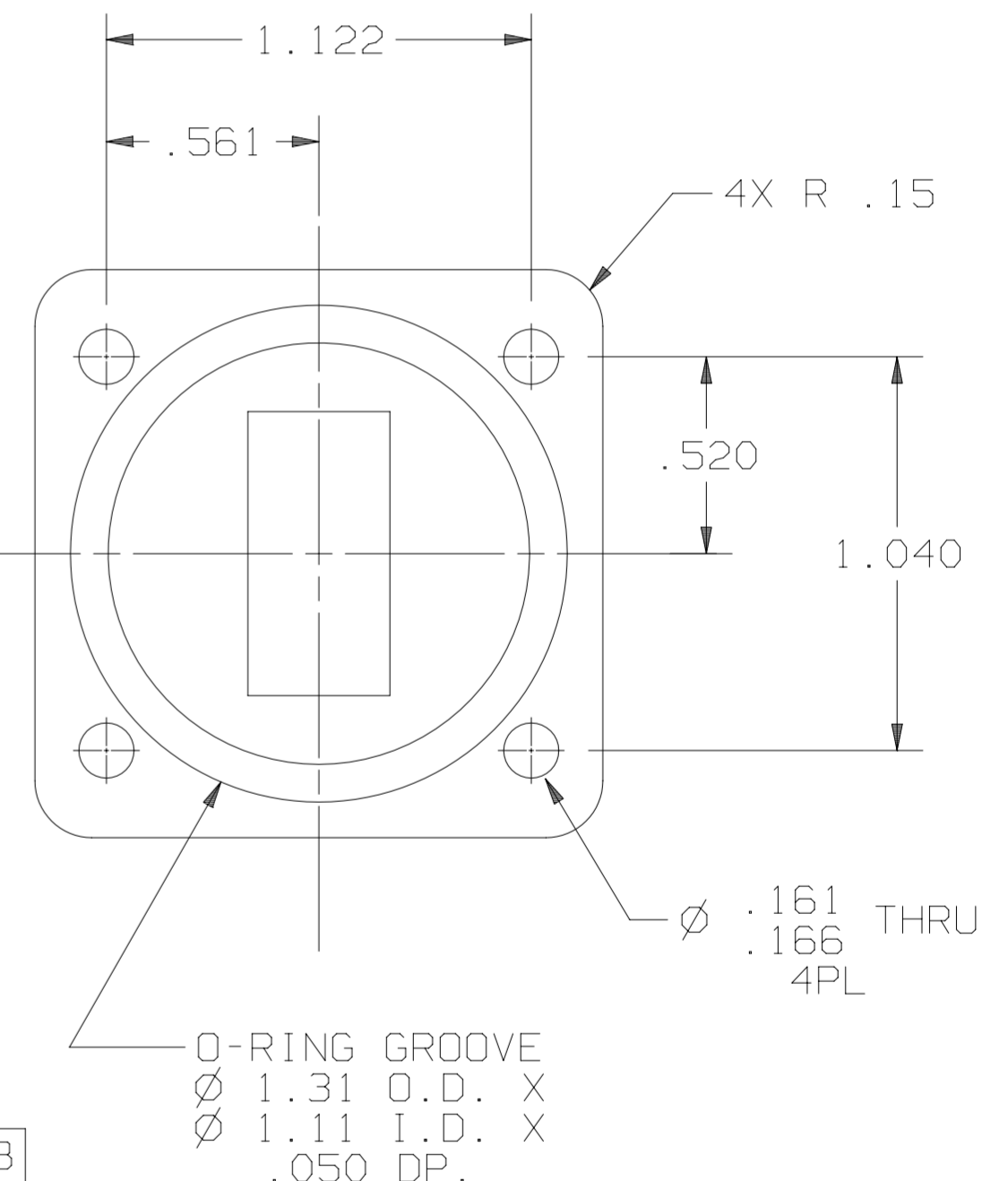
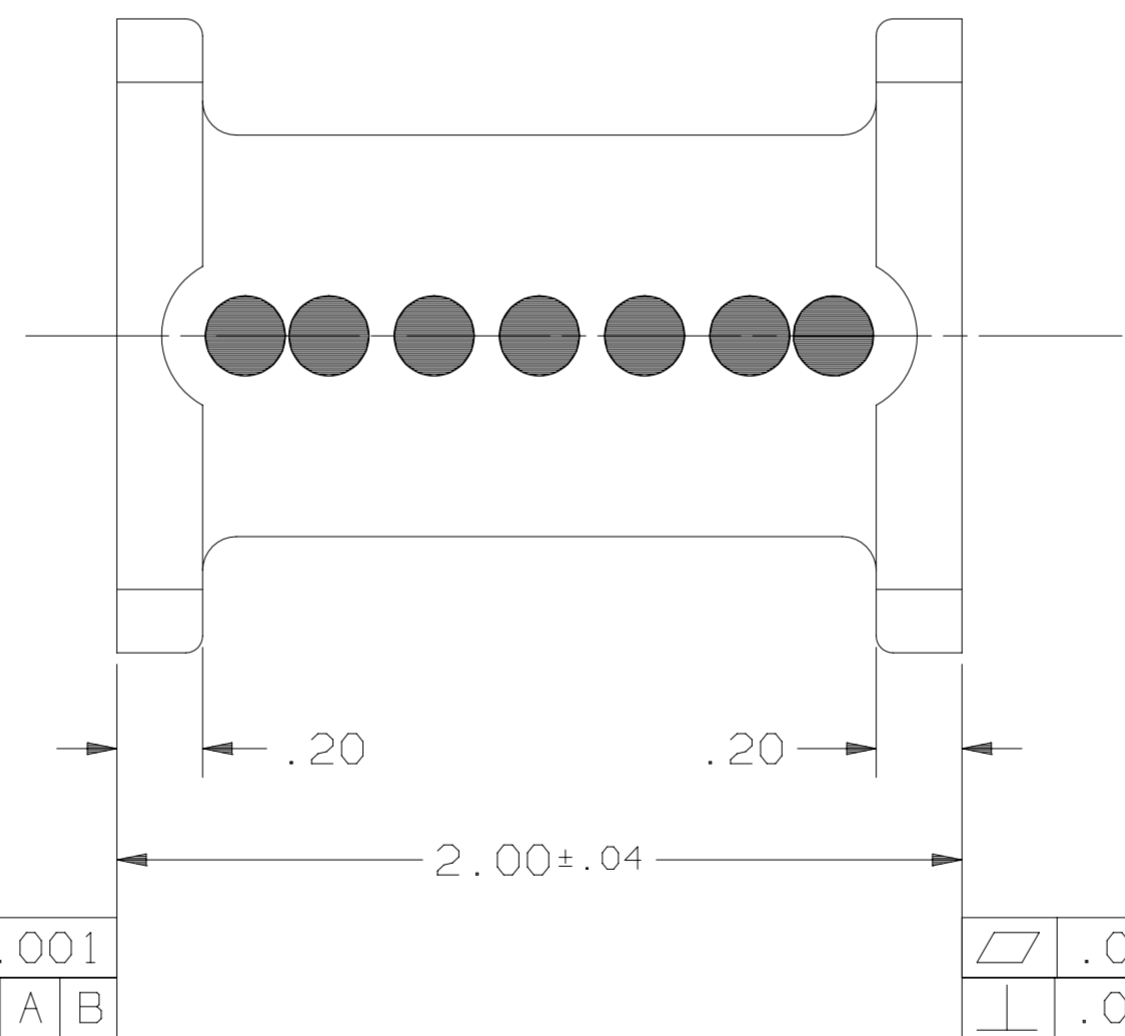
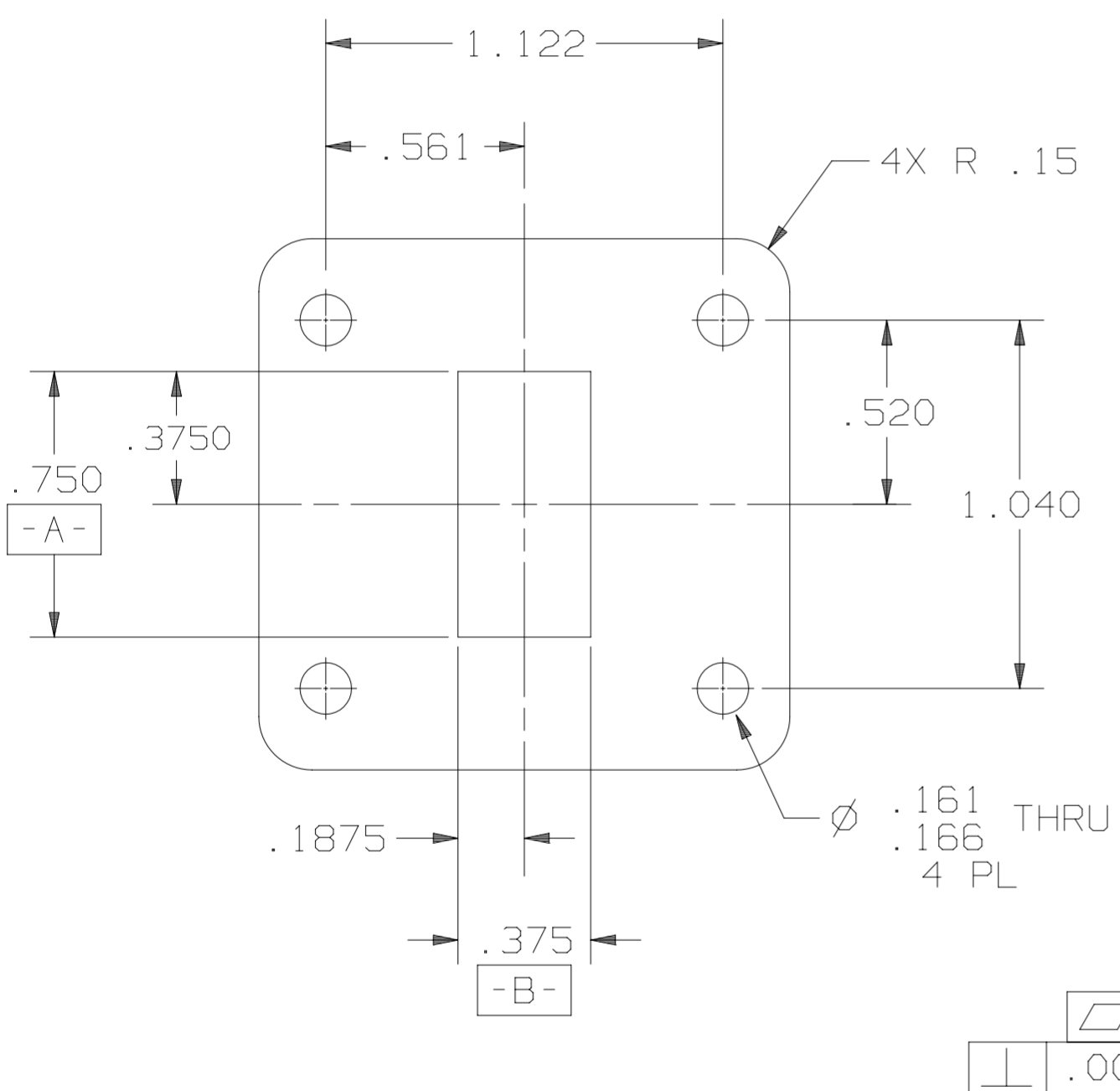
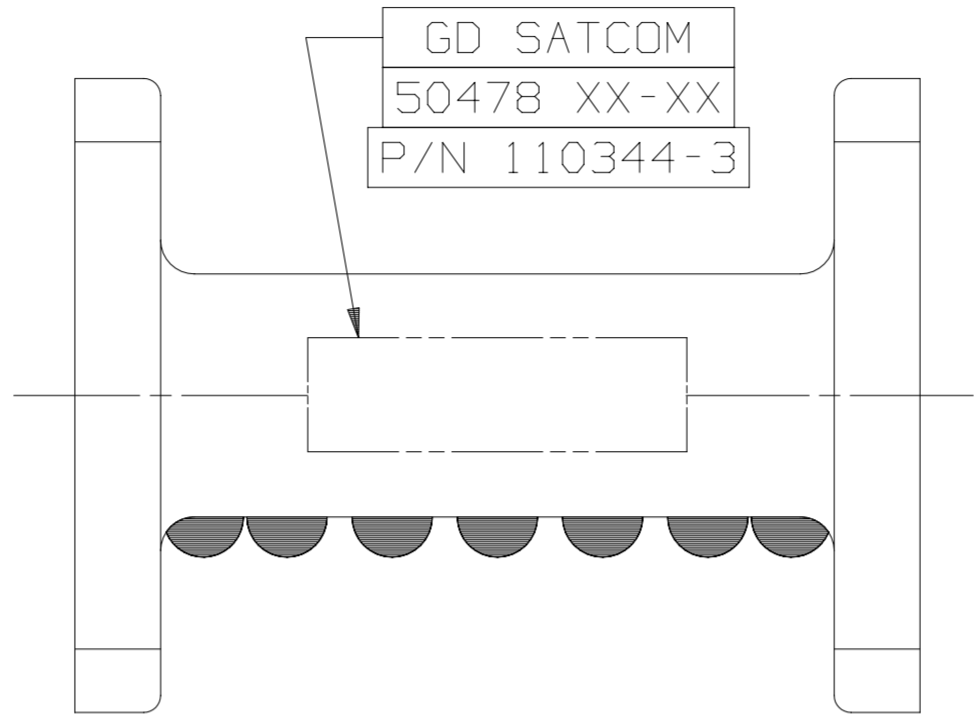
SPECIFICATIONS

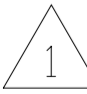
FREQUENCY BAND: 13.75 - 14.50 GHz
INSERTION LOSS: 0.20 dB MAX
VSWR : 1.20:1 MAX
ISOLATION : 30 dB MIN AT 10.70-12.75 GHz AND
 20 dB MIN AT 13.05 GHz
PRESSURIZATION: SEALED TO 2.0 PSIG
FINISH
INTERIOR AND FLANGE FACES : CHROMATE CONVERSION COATED PER
 MIL-DTL-5541F, TYPE II, CLASS 1A
EXTERIOR : 

REVISIONS

REV	DESCRIPTION	EFFECTIVE DATE	APPROVED BY
M	DR# 10261		

GD SATCOM
 50478 XX-XX
 P/N 110344-3



-  NOMENCLATURE FOR EXTERIOR FINISH OPTIONS:
- 110344-3C UNPAINTED CHROMATE CONVERSION COATED PER MIL-DTL-5541F TYPE 2 CLASS 1A
 - 110344-3B BLACK PAINT, COLOR No. 37038 PER FED-STD-595
 - 110344-3W WHITE PAINT, COLOR No. 17875 PER FED-STD-595
 - 110344-3G GREEN PAINT, COLOR No. 34096 PER FED-STD-595
 - 110344-3S SANDSTONE PAINT, COLOR No. 33510 PER FED-STD-595

NOTES: UNLESS OTHERWISE SPECIFIED.

UNLESS OTHERWISE SPECIFIED DIMENSIONS ARE IN INCHES. DIMENSIONS SHOWN IN () ARE FOR REFERENCE ONLY. TOLERANCES ARE: SURFACE - TOLERANCES - .XX ±.02 .XXX ±.003 .XXXX ± ANGLES ±0°30' 63 ✓ RoHS IN COMPLIANCE WITH EU DIRECTIVE 2002/95/EC NO Pb, Cd, Hg, Cr+6, PBB, OR PBDE INTENTIONALLY ADDED TO THIS PART.	APPROVALS	DATE	GENERAL DYNAMICS PROPRIETARY			
	DRAWN: TOVALIN, L	10-28-97	GENERAL DYNAMICS SATCOM Technologies 3111 Fujita St., Torrance, CA 90505, (310) 539-6704			
	CHECKED: H. SPIELEDER	10-28-97				
	ENGRG:			Ku-BAND FILTER		
MFG:						
QA:			SIZE	FSCM No.	DWG No.	REV
EAR CONTROLLED:			C	50478	110344-3	M
Export or re-export subject to 15 CFR 700-799.			SCALE: 2:1		SHEET	1