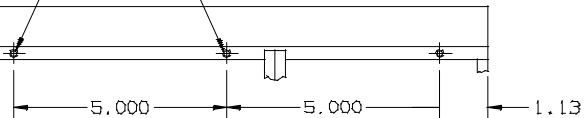


110230 SH 1

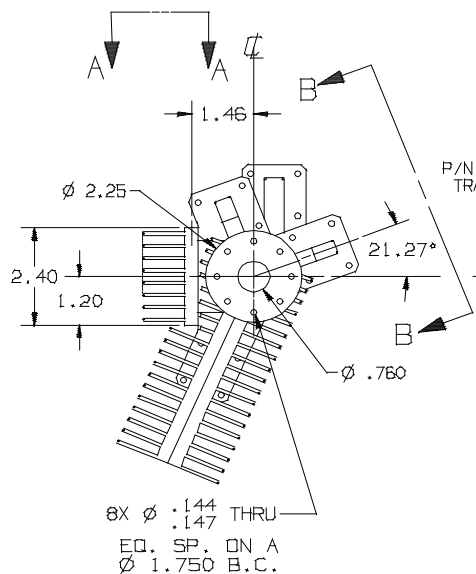
REVISIONS			
REV	DESCRIPTION	DATE	APPROVED
A	SEE REVISION SHEET	03-19-03	

2X .190-32UNF-2B
X .25 DP
NEAR AND FAR SIDE

.190-32UNF-2B
X .25 DP
NEAR SIDE ONLY



VIEW A-A

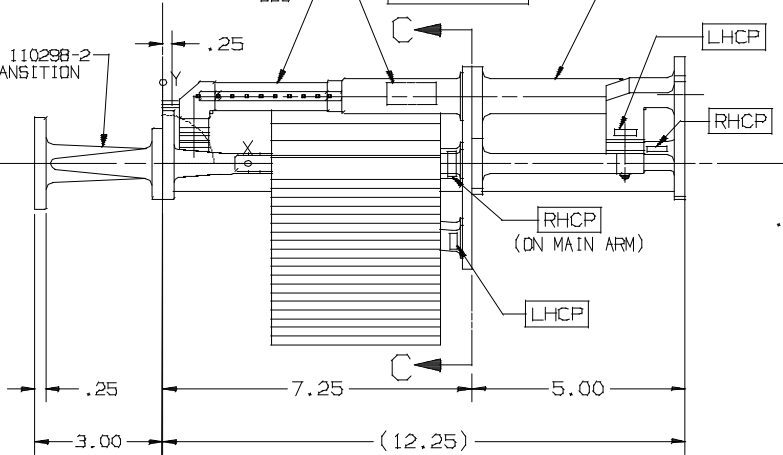


P/N 110298-2
TRANSITION

P/N 110225-1
Ku BAND FOUR-PORT
DBS

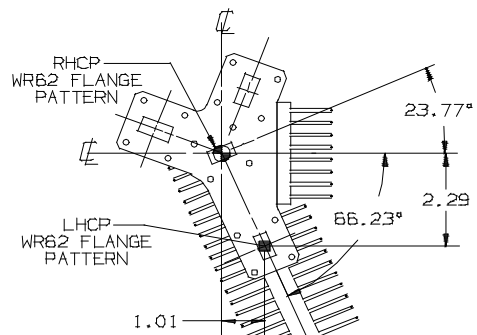
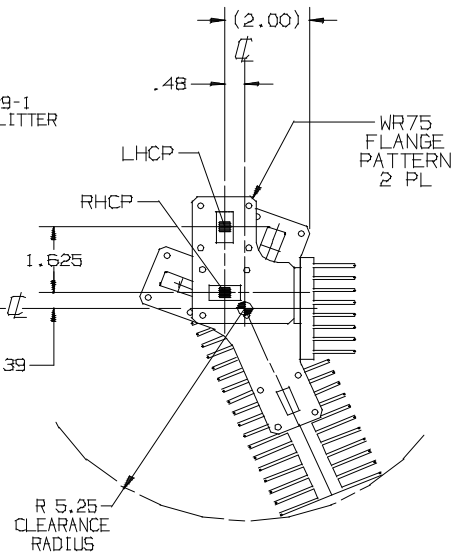
VertexRSI
50478 XX-XX
P/N 110230-19
S/N XXX

P/N 110229-1
RX POWER SPLITTER



VIEW B-B

-19 CONFIGURATION



SECTION C-C

UNLESS OTHERWISE SPECIFIED
DIMENSIONS ARE IN INCHES
TOLERANCES -
SURFACE .XX ±.01
.XXX ±.003
32 .XXXX ±.
✓ ANGLES ± 0°30'

MATERIAL

FINISH

SIGNATURES

DRAWN: L. TOVALIN 03-17-03

DATE

CHECKED:

INSP:

WF:



VertexRSI™

A TriPoint Global Company
Torrance, CA Facility, TORRANCE@TRIPOINTGLOBAL.COM
3111 Fujita St., Torrance, CA 90505, (310)539-6704

KU-BAND FOUR PORT
CIRCULAR POLARIZED

SIZE FSCM NO.
C 50478

DRAWING NO.
110230

SCALE: NONE

SHEET 1 OF 2

5

4

110230 | SH 2

2

1

REVISIONS			
REV	DESCRIPTION	DATE	APPROVED
	SEE SHEET 1		

SPECIFICATIONS FOR -19 CONFIGURATION

ELECTRICAL

FREQUENCY BAND

RX: 11.70 - 12.70 GHz
TX: 17.30 - 18.10 GHz

INSERTION LOSS

RX: 0.50 dB MAX
TX: 0.25 dB MAX

VSWR

RX: 1.20:1 MAX
TX: 1.20:1 MAX

ISOLATION

TX/RX: 85 dB MIN
RX/TX: 85 dB MIN
TX/TX: 20 dB MIN
RX/RX: 20 dB MIN

AXIAL RATIO : 0.40 dB MAX

MECHANICAL

POWER HANDLING: WITH
ADEQUATE HEAT DISIPATION: 10KW CW

APPROXIMATE HEAT
DISSIPATION AT

	*
4000 W CW:	224 W
5000 W CW:	280 W
6000 W CW:	336 W
7000 W CW:	391 W
8000 W CW:	448 W
9000 W CW:	504 W
10000 W CW:	560 W

* (BASED ON 0.25 dB LOSS TYPICAL)

HEATSINK MATERIAL : AL ALY 6061-T6

TOTAL HEAT DISSIPATION AREA: 760 IN²

MAX OPERATING TEMPERATURE : 115°C

ESTIMATED WEIGHT : APPROX 7 Lbs

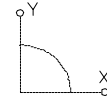
FINISH EXTERIOR: BLACK PAINT COLOR
No. 3703B
PER FED-STD-595

HEATSINK MOUNTING SURFACES: CHEM FILMED PER
MIL-C-5541C. CLASS 1A

COMMON PORT: CAD PLATED PER
QQ-P416, TYPE 2,
CLASS 2

RX AND TX PORTS: CHROMATE CONVERSION
COATED

① SURFACE TO BE FREE OF PRIMER AND PAINT



SIZE	FSCM NO.	DRAWING NO.	REV
C	50478	110230	A
SCALE: NONE		SHEET 2 OF 2	