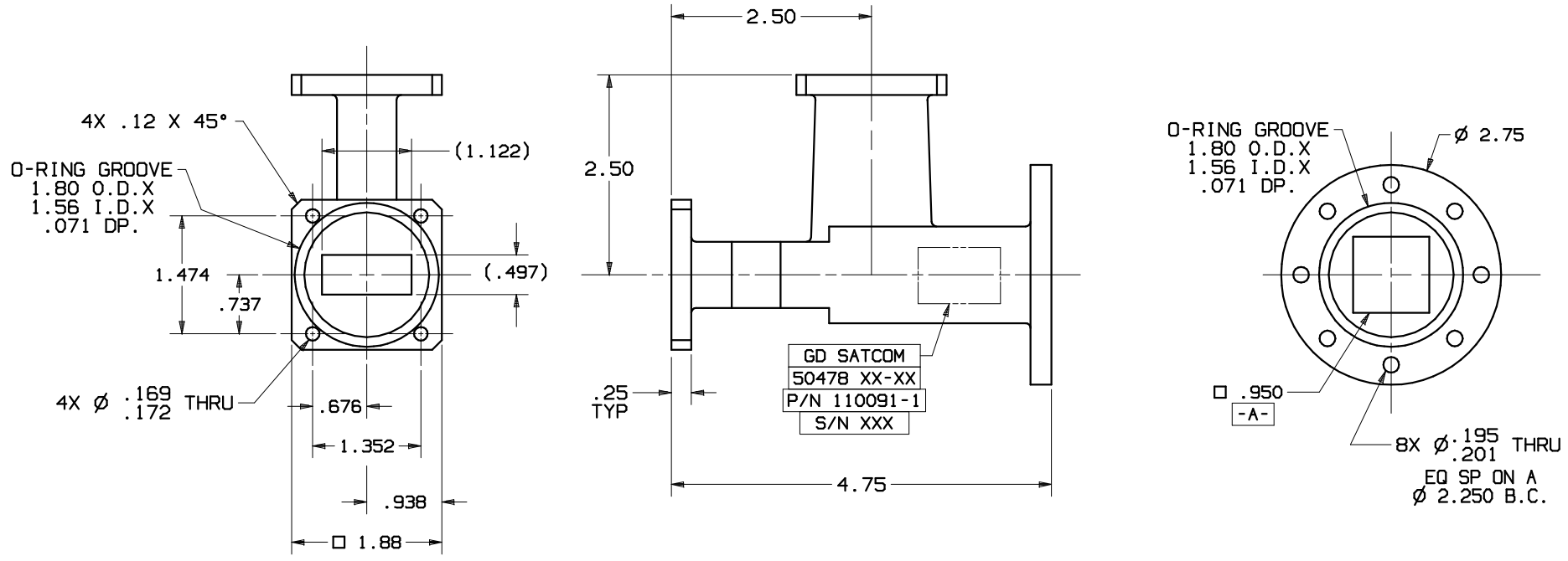
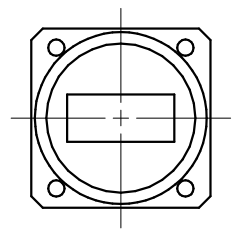


# SPECIFICATIONS

**FREQUENCY BAND:** 7.25 - 8.40 GHz (BOTH ARMS)  
**INSERTION LOSS:** 0.10 dB MAX  
**VSWR** : 1.20:1 MAX  
**ISOLATION** : 40 dB MIN  
**CROSSPOL** : 35 dB MIN

**PRESSURIZATION :** SEALED TO 5.0 PSIG  
**FINISH INTERIOR**  
 & **FLANGE FACES:** CHROMATE CONVERSION COATED  
 (MIL-DTL-5541F, TYPE II,) (CLASS 1A)  
**EXTERIOR:** SEE NOTE ①

REVISIONS			
REV	DESCRIPTION	EFFECTIVE DATE	APPROVED BY
H	SEE DR No 10599		



- ① **NOMENCLATURE FOR EXTERIOR FINISH OPTIONS:**
- \* 110091-1C UNPAINTED CHROMATE CONVERSION COATED
  - \* 110091-1W WHITE PAINT, COLOR No 17875 PER FED-STD-595
  - \* 110091-1B BLACK PAINT, COLOR No 37038 PER FED-STD-595
  - \* 110091-1G GREEN PAINT, COLOR No 34096 PER FED-STD-595
  - \* 110091-1S SANDSTONE PAINT, COLOR No 33510 PER FED-STD-595
- NOTES: UNLESS OTHERWISE SPECIFIED.

UNLESS OTHERWISE SPECIFIED INTERPRET DIMENSIONING & TOLERANCING PER ANSI Y14.5M-1982. DIMENSIONS ARE IN INCHES. DIMENSIONS SHOWN IN ( ) ARE FOR REFERENCE ONLY. TOLERANCES ARE:	APPROVALS	DATE	GENERAL DYNAMICS PROPRIETARY			
	DRAWN: L. TOVALIN	01-03-93	<b>GENERAL DYNAMICS</b> SATCOM Technologies 3111 Fujita St., Torrance, CA 90505, (310) 539-6704			
	CHECKED: H. SPIELEDER	01-09-93				
	ENGR:			<b>X-BAND OMT, Rx/Tx</b> <b>"CONVENTIONAL"</b>		
MFG:						
SURFACE TOLERANCES - 32 ✓ .XX ±.01 .XXX ±.004 .XXXX ±.0020 ANGLES ±0°30'	EAR CONTROLLED: Export or re-export subject to 15 CFR 700-799.		SIZE	FSCM No.	DWG No.	REV
MATERIAL: CAST ALUMINUM ALY A356			C	50478	110091-1	H
			SCALE: 1:1			SHEET 1